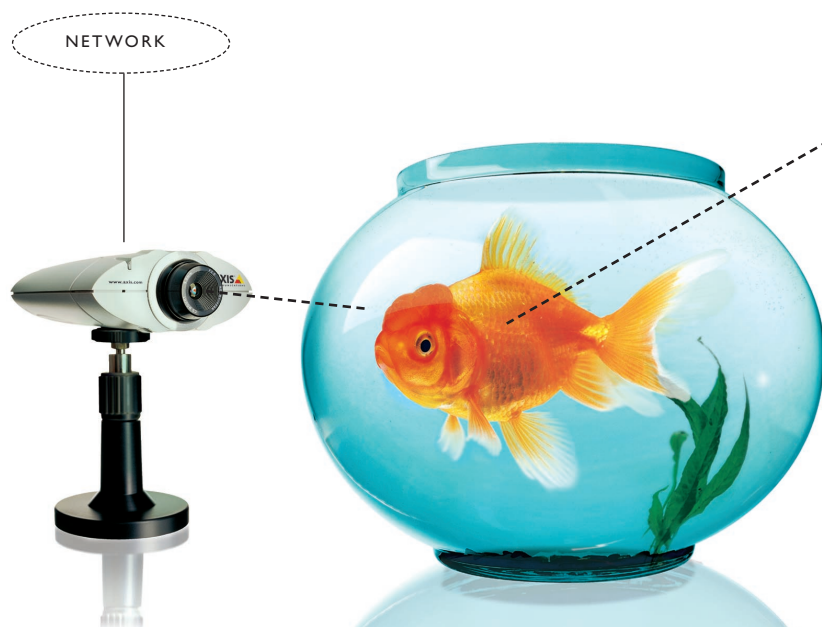


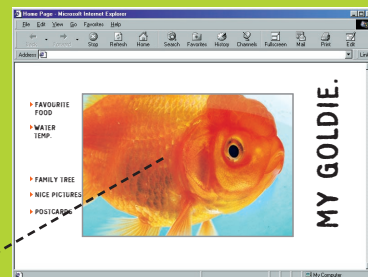
Live web images unleashed.



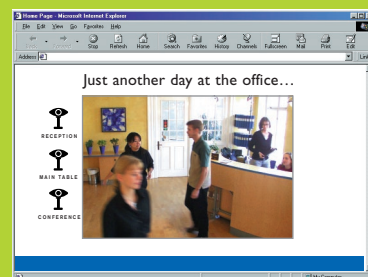
Crisp, quality images and streaming video from anywhere on your network. The AXIS 2100 Network Camera is a Plug and Watch™ digital camera with direct network attach!

No PC required – the camera operates stand-alone and can be placed wherever there is a LAN connection or an available modem. It even contains a high performance web server, so you can put the camera directly on the internet!

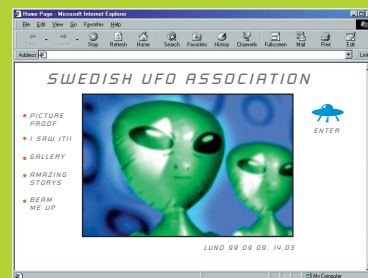
- **Amazing live images over the network/intranet.**
- **The only true “Plug & Watch” Network Camera available.**
- **Monitor your house or office over the internet.**
- **Place a camera wherever you want it – no PC required.**
- **Contains a built-in web server.**
- **Monitor the goldfish locally – or in a different continent.**



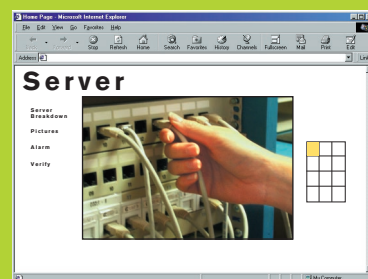
Show your pride to the Internet community. Turn your goldfish into a celebrity!



Where's everybody hiding out in the office? Great for LANs or as a part of your web site.



Keep a close eye on the world around you. Or show your part of it through the web.



Check your server room at anytime – from anywhere.



AXIS 2100 – an affordable, high quality Network Camera.

AXIS 2100
NETWORK
CAMERA

Inside

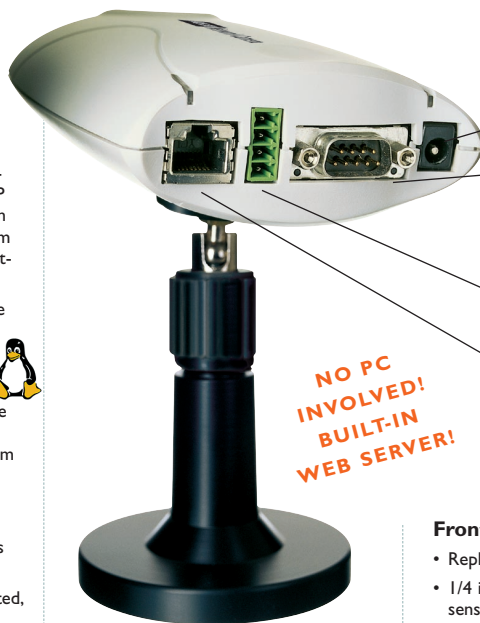
- Built-in webserver and web interface. No need for a PC.
- Quick and easy installation – connect to your network, assign an IP address, it's completed in less than a minute. The included null-modem cable enables set up without a network.
- Flash memory for simple software upgrades and HTML file storage.
- Built on the Linux operating system for maximum reliability.
- ARTPEC-I based, high speed image compression. 10 frames/second typically requires 1 MBps (maximum bandwidth limit can be set to prevent network saturation).
- Based on proven Axis ThinServer™ technology – more than 1 M units installed!
- Secure – can be password protected, or open to the entire world.
- 100 MIPS RISC processor for high performance.
- Compatible with operating systems such as Windows 95, Windows 98, Windows 2000, Windows NT, Linux and Mac.
- Works great with high-speed internet access such as DSL or cable modem as well as a standard modem.
- For more information, check our web site at www.axis.com.

Camera specification

- Digital, 24-bit color.
- Image Pickup Device: 1/4" inch HAD RGB progressive scan CCD.
- Hx V: 659x494.
- Backlight Compensation.
- Automatic AGC.
- White Balance: Automatic, Fixed Indoor, Fixed Fluorescent, Fixed Outdoor, Hold.
- Electronic shutter: 1/30s – 1/30000s, light condition adaptive frame rate control.
- Maximum Illumination: 10,000 Lux.
- Minimum Illumination: 3 Lux with light condition adaptive frame rate enabled.

Accessories

- Camera mini-tripod, using standard 1/4" nut.
- Null modem cable for modem installation.
- Power cord extension cable.
- Power supply: 12V AC, 9.6 VA.
- I/O connector.



Back

- External power supply 12V AC (included). Consumption max 7W.
- Modem connection RS-232C modem connector for dial-up use. Supports 3Com/US Robotics and compatible modems, accepts both dial-in and is also able to dial-out, automatically delivering images over e-mail or ftp.
- Input/Output connector to trigger the camera on external events, e.g., a door sensor with a solenoid.
- Network Ethernet 10 or 100 MBit network connection. The AXIS 2100 contains its own webserver, it's easy to include the live images into your webpages.

NO PC INVOLVED!
BUILT-IN WEB SERVER!

Image

- JPEG and Motion-JPEG, 5 levels of compression available.
- Resolution: 640x480 or 320x240.
- Image frame rate: up to 10 frames/second.

Weight

- 0.5 lb. (0.24 kg), excluding power supply and mini-tripod.

Dimensions

- Height: 1.6 in (4.1 cm).
- Width: 4.0 in (10.2 cm).
- Length: 5.8 in (14.7 cm).

High or low compression

The file size of a JPEG compressed image depends on the actual content of the image. Images containing much detail will generate larger files. Image quality is controlled through the level of compression. High compression yields small files while low compression maintains higher image quality at the expense of larger files. The table below contains average file size in Kbytes, derived from real life tests.

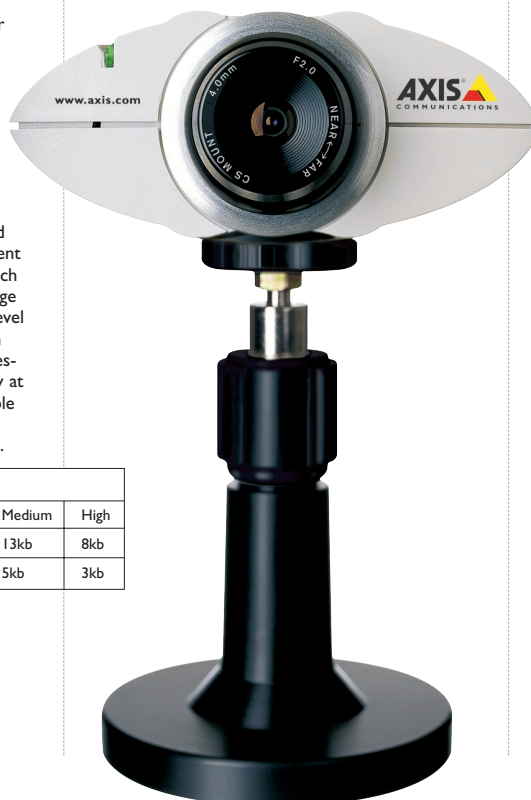
Resolution	Compression level			
	Lowest	Low	Medium	High
640x480	250kb	20kb	13kb	8kb
320x240	70kb	8kb	5kb	3kb

Hardware

- 8 Mbyte RAM.
- 2 Mbyte FLASH PROM.
- ARTPEC-I compression chip.
- ETRAX 100, 32 bit RISC, 100 MIPS CPU.

Front

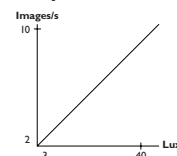
- Replaceable standard CS mount lens.
- 1/4 inch Sony progressive scan RGB CCD sensor (640x480) for ultimate picture quality.
- Shortest exposure time: 1/30000 s, longest exposure time: 0.5 s.
- Focus 0.5 mm to infinity.
- 4.0 mm lens, equivalent to 35 mm on a standard camera with aperture F 2.0.
- High sensitivity – works down to 3 lux (equivalent to candle light).
- Hidden push-key for focus and factory defaults.



System Requirements

The AXIS 2100 uses the standard Internet TCP/IP suite of protocols and can be used with most operating systems; Windows 95, 98, 2000 and NT as well as Linux, Unix and Mac. The only software needed is Internet Explorer 4.x or Netscape Navigator 4.x. PC with Dial-up networking required for non-network installation (null modem cable included). External modem required for dial-up functionality. Current supported modems are: 3Com 56K Faxmodem, US Robotics Sportster Flash, Ericsson K56 DTV, Diamond Supra Express 56e PRO. Updated list of supported modems at: www.axis.com.

Light condition adaptive frame rate



Operating Environment

- 40–105° F (5–40° C).
- 20–80% RHG, non-condensing.
- Indoor only.

Network

- RJ45 twisted pair cable, 10baseT Ethernet or 100baseTX Fast Ethernet, controllable maximum bandwidth utilization.

Modem connection

- Dial in and dial out. Pre-configured for easy installation with the major ISPs. For an updated list please visit www.axis.com.

Supported Protocols

- RJ45 twisted pair cable, 10baseT Ethernet and 100baseTX Fast Ethernet. TCP/IP, HTTP, FTP, SMTP, ARP, BOOTP, PPP, CHAP, PAP.

Approvals

- EMC: This equipment complies with the requirements in Part 15 subpart B of FCC Rules for Class A computing device.
- CE EN 55022 class B, EN55024.
- CC Class A.
- Safety: EN 60950, UL, CSA.

Warning

Never aim the camera at the sun or other extremely bright light sources! Whether the camera is in use or not, exposure to extremely bright objects will harm the CCD image sensor.

For more information info@axis.com.

Beijing
Phone +86 10 6510 2705

Boston
Phone +1 800 444-AXIS (2947)

Hong Kong
Phone +852 2836 0813

London
Phone +44 171 553 9200

Lund
Phone +46 46 270 18 00

Madrid
Phone +34 91 803 02 44

Miami
Phone +1 305 266 1633

Munich
Phone +49 89 95 93 96 0

Paris
Phone +33 1 49 69 15 50

Rotterdam
Phone +31 10 444 34 34

Seoul
Phone +822 780 9636

Shanghai
Phone +86 21 6445 4522

Singapore
Phone +65 250 8077

Sydney
Phone +61 2 9967 5700

Tokyo
Phone +81 3 3545 8282

AXIS
COMMUNICATIONS
www.axis.com