

AXIS 5400+ **Network Print Server**

User's Manual

Safety Notices

Please take some time to read through the safety notices before installing the AXIS 5400+.

Caution! - must be observed to avoid loss of data or damage to your equipment.

Important: - must be observed to avoid operational impairment.

Do not proceed beyond any of the above notices unless you have taken appropriate measures!

Electromagnetic Compatibility (EMC) notices - USA

This equipment generates and radiates radio frequency energy and if not installed and used in accordance with the instruction manual, may cause interference to radio communications. It has been tested and found to comply with the limits for a Class A computing device pursuant to Subpart B of Part 15 of FCC rules, which are designed to provide reasonable protection against such interference when operated in a commercial environment. Operation of this equipment in a residential area is likely to cause interference in which case the user at his own expense will be required to take whatever measures may be required to correct the interference. Shielded cables should be used with this unit to ensure compliance with the Class A limits.



Electromagnetic Compatibility (EMC) notices - Europe

This digital equipment fulfils the requirements for radiated emission according to limit B of EN55022/1994, and the requirements for immunity according to EN50082-1/1992 residential, commercial, and light industry (Compliance is not valid for unshielded network and printer cables).

Liability

Every care has been taken in the preparation of this manual; if you detect any inaccuracies or omissions, please inform us by contacting your local Axis office. AXIS Communications AB cannot be held responsible for any technical or typographical errors and reserves the right to make changes to the product and manuals without prior notice. Axis Communications AB makes no warranty of any kind with regard to the material contained within this document, including, but not limited to, the implied warranties of merchantability and fitness for a particular purpose. Axis Communications AB shall not be liable nor responsible for incidental or consequential damages in connection with the furnishing, performance or use of this material.

Web Browser - We recommend using a standard Web-browser with JavaScript support, such as Internet Explorer 4.0 or Netscape 4.0 and higher.

Axis' Trademarks

AXIS IP Jumpstarter, AXIS NetPilot, AXIS Print System, AXIS ThinWizard, ThinServer.

Other Trademark Acknowledgments

AIX, Apple, DEC, DOS, Ethernet, EtherTalk, HP, IBM, JetAdmin, Internet Explorer, LAN Manager, LAN Server, LANtastic, Macintosh, Microsoft, MVS, NDPS, Netscape, Novell NetWare, OS/2, OS/400, PostScript, SCO, UNIX, VM, VMS, VSE, Windows, are registered trademarks of the respective holders

AXIS 5400+ User's Manual

Part No: 17831

Copyright © Axis Communications AB 2001

Revision 1.0

Date: January 2001

Preface

Thank you for purchasing the AXIS 5400+ Network Print Server. This product has been developed to connect your printers anywhere in your network, allowing all network users access to the shared printer resources.

About this manual

This manual provides introductory information as well as detailed instructions on how to set up and manage the AXIS 5400+ in various network environments. It is intended for everyone involved in installing and managing the AXIS 5400+. To fully benefit from the manual, you should be familiar with basic networking principles.

This manual is applicable for the AXIS 5400+, with firmware release 6.20 or later.

About Axis

Axis Communications is dedicated to providing innovative solutions for network-connected computer peripherals. Since the start in 1984, it has been one of the fastest growing companies in the market and is now a leader in its field.

ThinServer™ Technology - enables Axis' products to act as intelligent file server independent ThinServer devices. A ThinServer device is a network server which includes "thin" embedded server software capable of simultaneous multiprotocol communication, scalable RISC hardware and a built-in Web server which allows easy access and management via any standard Web browser. The ThinServer technology makes it possible to connect any electronic device to the network, thus providing "Access to everything".

Today, Axis Communications offers several major ThinServer product lines:

Network Print Servers - offer a powerful and cost-efficient method for sharing printer resources in your network. They connect to any standard printer, featuring high performance, simple management and easy upgrading across the network. The print servers are available in Ethernet, Fast Ethernet and Token Ring versions.

IBM Mainframe and S/3x - AS/400 Print Servers and Protocol Converters - include a wide range of LAN, coax and twinax attached print servers for the IBM host environment. By emulating IBM devices, these servers provide conversion of the IPDS, SCS and 3270DS data streams to the major ASCII printer languages.

Network Attached CD/DVD Servers - provide a flexible and cost-efficient solution for sharing CD-ROMs, DVD-ROMs and other optical media across the network. They are available in Ethernet, Fast Ethernet and Token Ring versions.

Network Attached Storage Servers make it possible to easily make hard disk storage available in Ethernet networks. Through direct access by clients, yet integrating into existing security schemes, and requiring a minimum of maintenance they also provide a low total cost of ownership for network storage.

Network Camera Servers - provide live images using standard Internet technology, thus enabling access to live cameras via any standard Web browser. They offer a perfect solution for remote surveillance over the Internet; their sharp images can bring life into any web site. These servers support Ethernet as well as PSTN and GSM phone lines.

Network Document Servers - enable easy distribution of paper-based information across workgroups and the enterprise. By sending scanned documents to your destination via the Internet/intranet, you will reduce your faxing/ mailing costs, as well as save time, thus improving your organization's efficiency.

Support services

Should you require any technical assistance, please contact your Axis dealer. If your questions cannot be answered immediately, your Axis dealer will forward your queries through the appropriate channels to ensure you a rapid response.

If you are connected to the Internet, you can find on-line manuals, technical support, firmware updates, application software, company information, on the addresses listed below.

WWW:	<i>http://www.axis.com</i>
FTP server:	<i>ftp://ftp.axis.com/pub/axis</i>
Support e-mail	<i>support@axis.com</i>

Table of Contents

	About this manual	3
	About Axis	3
	Support services	5
NetWare		
Windows	Section 1 Introduction	9
	Where to use it	10
	How to use it	11
	Features and Benefits	12
OS/2	Section 2 Product Overview	14
	Package Contents	14
	The AXIS Product CD	15
	AXIS 5400+ Physical Description	16
Macintosh	Section 3 Basic Installation	18
	Getting Started	18
	Connecting a printer to the Ethernet Network	19
	Installation Guide	20
	Assigning an IP address	22
UNIX	Section 4 Setting Up - Windows	32
	AXIS Print System Version 1.20 Overview	33
	TCP/IP Printing in Windows 95, 98, NT and 2000	34
	AXIS Print Monitor Overview	41
	AXIS Print Utility for Windows Overview	46
	Windows 3.1 and Windows for Workgroups	49
	Windows Clients using LANtastic	52
	Section 5 Setting Up - NetWare	53
	Setup using NDPS	54
	Installing the AXIS 5400+ in an NDPS environments	54
	Basic Setup with AXIS NetPilot	56
	Advanced Installation using AXIS NetPilot	59
	Basic Queue-based printing over IP	62
	Queue-based Printing Methods	65

Section 6	Setting Up - OS/2	66	NetWare
	TCP/IP Printing	67	
	NetBIOS/NetBEUI Printing	68	
Section 7	Setting Up - Macintosh	72	Windows
	Installation Using the Chooser Window	72	
	Choosing a Printer	73	
Section 8	Setting Up - UNIX	78	OS/2
	Installation in the UNIX Environment	78	
	Print Methods on TCP/IP Networks	81	
	Using Logical Printers to Customize your Printing	84	Macintosh
Section 9	Management & Configuration	92	
	Using a Web browser	93	
	Using AXIS ThinWizard	98	UNIX
	Using AXIS NetPilot	102	
	Using FTP	109	
	Using Telnet	112	UNIX
	Using SNMP	115	
	Using HP Administration Tools	117	
	Using Novell Utilities	118	UNIX
Section 10	Print Server Features	120	
	Auto-IP	120	
	E-mail Notification	120	UNIX
	IPP - Internet Printing Protocol	122	
	Multi-Language Support	134	
	Network Speed	135	UNIX
	Web Flash-Loading	136	
Section 11	Upgrading the Software	137	
	Obtaining the Updated Software	137	UNIX
	Upgrading the Firmware	138	
Section 12	Test Button	141	
Section 13	The Parameter List	143	

NetWare

Section 14 Technical Specifications..... 150

Section 15 Glossary..... 154

Index..... 158

Windows

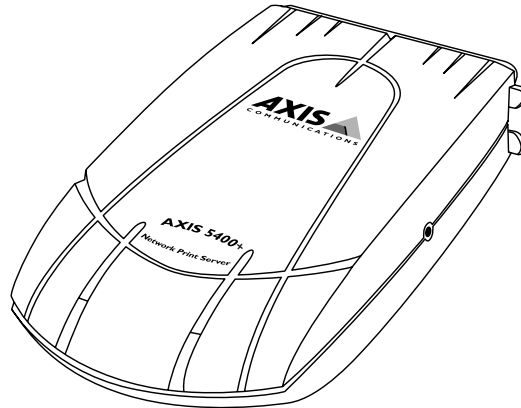
OS/2

Macintosh

UNIX

Section I Introduction

Based on ThinServer technology, the AXIS 5400+ allows you to share your available printer resources with everyone on your network. You can connect your AXIS 5400+ directly to any standard printer.

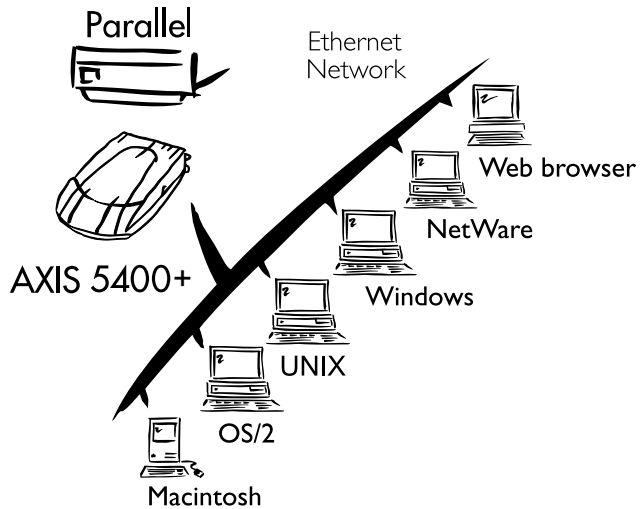


The AXIS 5400+ Network Print Server

Note:

If your printer supports the mini-Centronics standard, a centronics-to-mini-centronics cable must be used.

Where to use it



Supported Environments

The AXIS 5400+ is the ideal print server in mixed environments as it can communicate with all the major computer systems and network protocols including:

- Windows
- Windows clients connected to LANtastic networks
- NetWare
- UNIX
- OS/2
- Macintosh
- Internet/Intranet via any Web browser with JavaScript support

How to use it

Installation and Integration

The installation of the AXIS 5400+ and its integration into the network is performed using the appropriate Axis client software, which is provided on the Axis Product CD and the Axis Communications web site:

- AXIS Print System (Windows 95/98, NT4.0 and 2000)
- AXIS Print Monitor (Windows NT 3.5x)
- AXIS Print Utility for Windows (Windows 3.1 and WfW)
- AXIS NetPilot™ (NetWare - IPX)
- AXIS Print Utility for OS/2
- axinstall (UNIX)
- AXIS Gateway Configuration Utility

Notes:

The AXIS 5400+ can be installed in the Macintosh environment without any Axis client software.

The AXIS 5400+ can be installed in NetWare - Pure IP environments with the NetWare Administrator.

Configuration and Management

As the AXIS 5400+ comprises a built-in Web server, it can be configured and managed directly from its internal Web pages, using HTTP over TCP/IP. Access to the AXIS 5400+ via a Web browser offers you a platform-independent management tool that is suitable for all supported network environments.

In TCP/IP networks you can also use AXIS ThinWizard, which provides you with remote management capabilities for your AXIS ThinServer devices.

If your network does not support TCP/IP, you can use AXIS NetPilot to configure and manage the AXIS 5400+. AXIS NetPilot supports communication via IPX/SPX and NetBIOS/NetBEUI.

Features and Benefits

- Reliability** The AXIS 5400+ print server provides high performance and reliability combined with low power consumption. The electronic circuits are based on the AXIS ETRAX100 chip, which comprises an integrated 32 bit RISC processor and associated network controllers.
- Flexibility** The AXIS 5400+ supports printing in all major computer systems and environments, including five different print methods in the TCP/IP environment. The integrated IPP (Internet Printing Protocol) function allows for printing over the Internet.
- Speed** The AXIS ETRAX 100 chip has been specifically designed for LAN products and benefits users with a faster throughput than a direct PC-to-printer connection. With a sustained data throughput of more than 1 Mbyte per second, the AXIS 5400+ is fast. High speed Centronics communication such as ECP, Hewlett-Packard Fast Mode, High Speed and IBM Fast Byte is supported.
- Easy to Install** Using the available Axis installation tools, you can install the AXIS 5400+ into any of the supported networking environments in just a few minutes.
- Security** You can assign passwords to restrict both login and printer access.
- Monitoring** The AXIS 5400+ internal Web pages allow you to continuously monitor printer status.
- AXIS Print System and AXIS NetPilot also allow you to monitor printer status. AXIS Print System and AXIS Print Monitor can be configured to display pop-up messages that show the status of peer-to-peer print jobs.
- The AXIS 5400+ supports SNMP for remote monitoring.

- Futureproof** You can upgrade the AXIS 5400+ firmware (print server software) over the network. This allows you to quickly update and enhance the operational features of your AXIS 5400+ when new firmware becomes available. All firmware updates are free of charge.
- Pocket-sized** The AXIS 5400+ is equipped with one high-speed parallel port connector that plugs directly into the printer's parallel port.
- Language Support** The AXIS 5400+ internal web pages can be displayed in English, French, German and Spanish. The default language is English.

NetWare

Windows

OS/2

Macintosh

UNIX

Section 2 Product Overview

Package Contents

Verify that nothing is missing from the print server package by using the check list below. Please contact your dealer if anything should be missing or damaged.



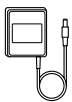
- AXIS 5400+, part no: 0130-001-01

- AXIS Product CD, revision 2.0 or higher



- The AXIS 5400+/5600+ Quick Installation Guide, part no: 17811 rev. 1.0

- Power Supply:



Country	Part nos. (AXIS PS-B)
<i>Australia</i>	<i>13269</i>
<i>Europe</i>	<i>13267</i>
<i>Japan</i>	<i>13936</i>
<i>UK</i>	<i>13268</i>
<i>USA</i>	<i>13270</i>

Optional accessories

- Self-adhesive velcro ribbons, part nos: 13282 and 13283
- Printer cable extension, part no: 13522
- Centronics-to-mini-centronics cable, part no:16453

The AXIS Product CD

The AXIS Product CD includes the latest Axis utilities software, print server firmware, user documentation, etc. It is compatible for use within all the supported Axis computing environments.

Start-up procedures for Windows

The AXIS Product CD starts automatically from a local CD drive on **Windows 95/98, NT and 2000** platforms.

Windows 3.1 users need to navigate to the CD root directory and click on the *setup31.exe* file from within the Windows File Manager.

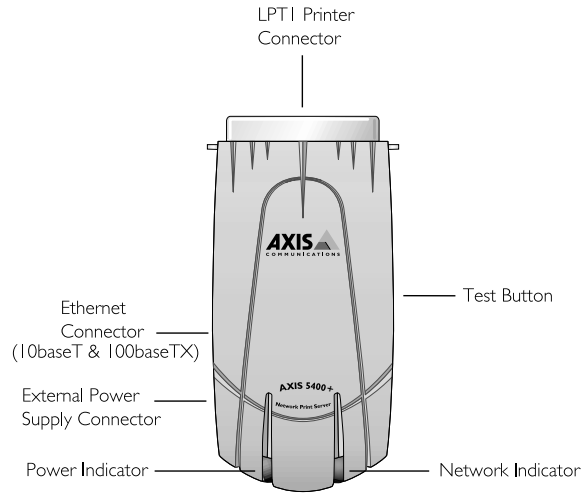
Start-up procedures for UNIX, OS/2 and MacOS

Using your preferred file manager application, navigate to the CD root directory and click *index.htm*

Note:

The AXIS Product CD contains free Adobe Acrobat Reader software.

AXIS 5400+ Physical Description



Plan view of the AXIS 5400+

AXIS 5400+ Firmware

The AXIS 5400+ print server has internal software which is also referred to as **firmware**. You can easily upgrade your AXIS 5400+ by downloading free firmware from the Axis website: www.axis.com.

Network Connectors

The AXIS 5400+ is designed for 10 Mbps Ethernet and 100 Mbps Fast Ethernet networks and connects to the network via a twisted pair category 5 cable (10baseT and 100baseTX) or better. The AXIS 5400+ is equipped with an autosensing function that detects the speed of the local network segment and varies the speed of its data communication accordingly, to either 10 Mbps or 100 Mbps.

Printer Port

The AXIS 5400+ print server is provided with a single high-speed IEEE 1284 compatible parallel port, that connects directly, without the need of cabling, to any standard printer.

Centronics-to-Centronics and Centronics-to-mini Centronics extension cables may be obtained from your local distributor for use with printers physically unable to accommodate the AXIS 5400+.

Test Button

The test button is used for:

- Printing a test page to check the connection to the printer.
- Printing the parameter list showing all the AXIS 5400+ settings.
- Resetting the AXIS 5400+ parameters to the factory default settings.

Refer to *Appendix 12 - Test Button*, on page 141, for more information about the test Button.

Network Indicator

The network indicator flashes to indicate network activity.

Power Indicator

The power indicator is lit while power is applied. If it is not lit, or it flashes, there is a problem with the AXIS 5400+ or its power supply.

Section 3 Basic Installation

Getting Started

After you have verified that no items presented in *Package Contents*, on page 14, are missing, you are ready to install your AXIS 5400+.

Follow the instructions below to install the AXIS 5400+:

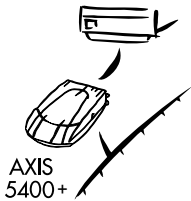
1. Start the procedure by connecting the AXIS 5400+ to your network and printer as described in *Connecting a printer to the Ethernet Network*, on page 19.
2. When the AXIS 5400+ is successfully connected, proceed to the *Installation Guide*, on page 20, where you will find further information about how to install and integrate the AXIS 5400+ in your network environments.

Connecting a printer to the Ethernet Network

Follow the instructions below to connect a printer to the network via the AXIS 5400+ print server.

Caution

The AXIS 5400+ external power supply you are using must be marked with the correct voltage! Refer to *Package Contents*, on page 14.



1. Make sure that the printer is switched off and that the AXIS 5400+ external power supply is disconnected.
2. Locate the serial number, found on the underside label of the AXIS 5400+, and write it down. You will need this number later during the network configuration.
3. Connect the AXIS 5400+ to the printer, either directly to the parallel printer port, or using the optional printer cable extension with the optional velcro ribbons.
4. Connect your AXIS 5400+ to the network using a twisted pair category 5 cable (10baseT and 100baseTX).
5. Switch on the printer. Your printer must be ready for use when you switch it on.
6. Connect the external power supply to the AXIS 5400+. The power indicator lights. If the network indicator starts to flash, the AXIS 5400+ is successfully connected to the network.
7. Press and release the test button on the AXIS 5400+ to print a test page. If the printer and the AXIS 5400+ are correctly connected, the AXIS 5400+ internal test page will be printed. If you are working in a DHCP network, your print server will receive an IP address automatically when you connect it to the network. You can see the IP address (Internet Address) printed on the test page.

You are now ready to install your server onto your network using one of the methods detailed in the *Installation Guide*, on page 20.

Notes:

The test page includes a list of the most important print server parameters, including IP address, network speed and the firmware version number.

The AXIS 5400+ uses high speed Centronics Communication. For use with older printers not supporting high speed, this function can be disabled by using any standard Web browser. Please refer to *Section 9 Management & Configuration*, on page 92, for more information.

Installation GuideInstallation Methods

The method of installation that you choose should be dictated by your printing requirements and your supported network environments. Select the appropriate installation method from the table below:

Environment	Network Configuration	Action
Windows	TCP/IP	See Section 4 Setting Up - Windows , on page 32
	NetBIOS/NetBEUI	See Section 4 Setting Up - Windows , on page 32
NetWare	NDPS (Pure IP)	See Assigning an IP address , on page 22 See Setup using NDPS , on page 54
	Standard NetWare (Pure IP)	See Assigning an IP address , on page 22 See Basic Queue-based printing over IP , on page 62
	NDPS (IPX)	See Setup using NDPS , on page 54
	Standard NetWare (IPX)	See Assigning an IP address , on page 22
	Advanced configuration (IPX)	See Assigning an IP address , on page 22. Proceed with Basic Setup with AXIS NetPilot , on page 56
OS/2	TCP/IP	See Assigning an IP address , on page 22 Proceed with Section 6 Setting Up - OS/2 , on page 66
	NetBIOS/NetBEUI	See Section 6 Setting Up - OS/2 , on page 66
Macintosh	AppleTalk	See Section 7 Setting Up - Macintosh , on page 72
UNIX	TCP/IP	See Assigning an IP address , on page 22 Proceed with Section 8 Setting Up - UNIX , on page 78

Installation Tools

The appropriate installation tools for the AXIS 5400+ are summarized in the following table:

Environment	Operating System Protocols	Installation Tool
<i>Windows 95/98/NT/2000</i>	<i>TCP/IP</i>	<i>AXIS Print System</i>
<i>Windows 3.1/WfW</i>	<i>TCP/IP</i>	<i>LPR Spooler (*)</i>
	<i>NetBIOS/NetBEUI</i>	<i>AXIS Print Utility for Windows</i>
<i>OS/2</i>	<i>TCP/IP</i>	<i>lprportd service method</i>
	<i>NetBIOS/NetBEUI</i>	<i>AXIS Print Utility for OS/2</i>
<i>NetWare</i>	<i>TCP/IP</i>	<i>NetWare Administrator</i>
	<i>IPX/SPX</i>	<i>AXIS NetPilot</i>
<i>Macintosh</i>	<i>AppleTalk</i>	<i>Chooser</i>
<i>UNIX</i>	<i>TCP/IP</i>	<i>axinstall</i>

Recommended installation tools for the AXIS 5400+

- * A shareware LPR spooler is available for Windows for Workgroups. You can download this software from ftp://ftp.axis.com/pub/axis/software/prt_srv/utility/wlprs/.

NetWare

Windows

OS/2

Macintosh

UNIX

Assigning an IP address

To establish communication with the TCP/IP network, enabling TCP/IP printing and Web browser management, an IP address must be assigned to your AXIS 5400+.

Before you start

- | | | |
|-----------|-------------------|---|
| NetWare | System privileges | You need root privileges on your UNIX system, or administrator privileges on a Windows NT server to set the IP address using ARP, RARP, BOOTP or DHCP. |
| Windows | Ethernet address | You need to know the Ethernet address of your AXIS 5400+ to perform the installation. The Ethernet address is based upon the serial number of your AXIS 5400+. This means, for example, that an AXIS 5400+ with the serial number of 00408C100086, will have the corresponding Ethernet address of 00 40 8C 10 00 86.

The serial number is located on the bottom label of the print server. |
| OS/2 | IP address | Unless you are downloading the IP address using DHCP, you must obtain an unused IP address from your network administrator. |
| Macintosh | | |
| UNIX | | |

Important:

DO NOT use the IP addresses used in the following examples when installing your AXIS 5400+. Always consult your network administrator before assigning an IP address to your AXIS 5400+.

Methods for setting the IP Address

The IP address of your AXIS 5400+ can be set using the following methods, depending on your network operating environment:

Method	Network environments	See ...
AXIS Print System	Windows 95/98/NT/2000	Set the print server's IP address using AXIS Print System version 1.20 , on page 25
AXIS IP JumpStarter	Windows 95/98/NT/2000	Set the print server's IP address using AXIS IP JumpStarter , on page 26
DHCP*	Windows NT/2000, UNIX, NetWare 5, OS/2	Setting the print server's IP address using DHCP , on page 27
ARP	Windows 95/98/NT/2000, OS/2	Setting the print server's IP address using ARP in Windows and OS/2 , on page 28
	UNIX	Setting the print server's IP address using ARP in UNIX , on page 29
RARP*	UNIX	Setting the print server's IP address using RARP in UNIX , on page 29
BOOTP*	UNIX, NetWare 5, OS/2	Setting the print server's IP address using BOOTP in UNIX , on page 30
AXIS NetPilot	Windows 95/98/NT/2000, NetWare 5	Assigning an IP address , on page 22
Auto-IP*	Windows 98/2000,	DHCP and Auto-IP , on page 31

*The IP-address of your print server is set automatically when using these methods.

Notes:

The ARP and RARP methods operate on single network segments only, i.e. they cannot be used over routers.

Refer to *Setting Parameters*, on page 76 for information about setting the IP address in the Macintosh environment.

NetWare
Windows
OS/2
Macintosh
UNIX

Registering and Resolving Host Names

In order to register the host name of the AXIS 5400+ in networks with dynamic IP address settings, WINS (Windows Internet Name Service) and DDNS (Dynamic Domain Naming System) are supported. It is recommended that at least one of these methods should be used if you are setting the IP address of the AXIS 5400+ using DHCP.

The host name of the AXIS 5400+ is specified by the PS_NAME parameter. Refer to *Appendix 13 The Parameter List*, on page 143

WINS host name rules

WINS only supports 15 character long host names. If your host name is longer than 15 characters, the AXIS 5400+ truncates the host name to 15 characters when registering with a WINS server. You can access your AXIS 5400+ using the host name that is registered on your WINS server. Refer to *Section 9 Management & Configuration*, on page 92.

DDNS host name rules

DDNS supports 53 character long host names, but they can only consist of the characters 'A-Z', 'a-z' and '-'. If your host name consists of any other characters, they are converted to '-', when registering with a DDNS server. You can access your AXIS 5400+ using the host name that is registered on your DDNS server. Refer to *Section 9 Management & Configuration*, on page 92.

If the host name matches another entry in the DDNS data base, the AXIS 5400+ will delete the entry before it can be registered. Therefore it is important not to use duplicate host names on your network.

Notes:

The host name limitations conclude that if you want to register the same host name at a WINS server and a DDNS server, the host name should be no longer than 15 characters and it should only contain the characters 'A - Z', 'a-z' and '-'.

Refer to your system manuals or to your network administrator for instructions on how host name resolutions are performed on your system.

Set the print server's IP address using AXIS Print System version 1.20

AXIS Print System version 1.20 can be used to set the IP address of your Axis print server. If your print server didn't receive an IP address automatically by DHCP when you connected it to the network, you can set it manually. Follow these instructions to set the IP address of your Axis print server and configure the printer to which it is attached:

1. Download AXIS Print System to your host and install it.
2. From the AXIS Print System **Available Printers/Print Servers** view, select an unconfigured Axis print server, showing up as a print server icon:



3. Double-click the print server icon. The AXIS Print System **Add Printer Wizard** will appear. The print server will have a temporary IP address, which was assigned to it through Auto-IP. The default Auto-IP address structure is: **169.254.xxx.xxx**. This temporary IP address needs to be changed to a new and unused one:
4. In the **IP Address** field, enter the new IP address of the print server.
5. Set the **Subnet Mask** and **Default Gateway** according to your network configuration. Click **Next>** to continue.
6. Next, you will be prompted to enter an Administrator password. You can obtain this password from your Network Administrator (the default password is **pass**). Click **OK**.
7. Next, Axis Print System will start looking for printers attached to the print server. Click the radio-button next to the printer you want to add to **My Printers** and click **Next>**. Continue to Step 2 in *Configure a network printer in AXIS Print System*, on page 26 to install an appropriate printer driver.

Note:

Click the Axis Print System 'Help' button for information on the Default Gateway and Subnet Mask.

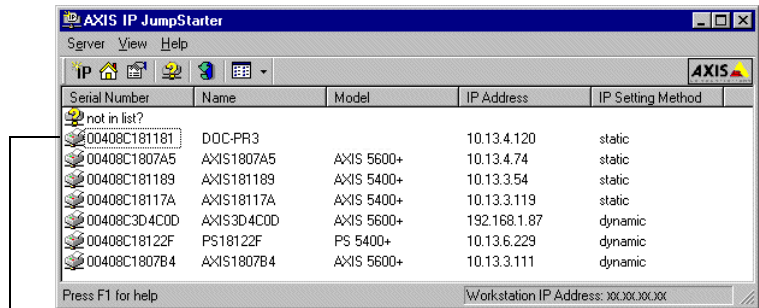
Configure a network printer in AXIS Print System

1. When you select a network printer from the **Available Printers/Print Servers** list and double-click, AXIS Print System will suggest which driver to use for the printer you have chosen.
2. Highlight a driver in the list and click **Next>**. If you wish to choose a driver from the AXIS Print System driver list, click **More**. To locate alternative printer drivers, click **Browse to Driver Setup File** and install.
3. Enter a name for the printer (if you wish), follow the instructions on the screen and click **Finish** to complete the printer driver installation.

Set the print server's IP address using **AXIS IP JumpStarter**

AXIS IP JumpStarter is an application that allows you to assign IP addresses to your Axis servers and find IP addresses already assigned to Axis servers.

1. Select a print server from the serial number list:



Axis print server icon

2. From the **Server** menu, select **Set IP Address**. The **Set IP Address** dialog appears.
3. Click the radio button that corresponds to your choice of IP setting method (static or dynamic using DHCP).
4. Click **OK** to save your settings.
5. Enter the server root password (default=pass), and click **OK**. You have now finished the procedure of setting the IP address of the print server.

Setting the print server's IP address using DHCP

Follow the instructions below to download the IP address using DHCP:

1. Edit or create a scope in the DHCP manager of the DHCP daemon. The entries included in this scope should contain the following parameters:
 - range of IP addresses
 - subnet mask
 - default router IP address
 - WINS server IP address(es) or DDNS server IP address(es)
 - lease time
2. Activate the scope.

The AXIS 5400+ automatically downloads the DHCP parameters.

If you are using WINS or DDNS, you should include at least one WINS or DDNS server IP address in the DHCP scope. Immediately after the IP address has been received, the AXIS 5400+ registers its host name and IP address on the WINS alternatively DDNS server. Refer to *Registering and Resolving Host Names*, on page 24 for more information.

The AXIS 5400+ can automatically download a customized config file from a TFTP server. Just add the name of the config file and the TFTP server's IP address to your DHCP scope. The config file is downloaded immediately after the AXIS 5400+ receives its IP address.

Notes:

You do not have to restart the AXIS 5400+ to download the IP address.

If you do a factory default on the AXIS 5400+ and DHCP is not available, Auto-IP will automatically set the IP-address of the print server.

Setting the print server's IP address using ARP in Windows and OS/2

Follow the instructions below to set the IP address using ARP:

Note:

You need root privileges to execute the ARP-command.

1. Start a DOS window.
2. Type the following commands:

```
arp -s <IP address> <Ethernet address>
ping <IP address>
arp -d <IP address>
```

Example

```
arp -s 192.168.3.191 00-40-8c-10-00-86
ping 192.168.3.191
arp -d 192.168.3.191
```

The host will return Reply from 192.168.3.191 ... or a similar message. This indicates that the address has been set and that communication is established.

Notes:

When using the Windows 95 implementation of ARP, change the first line to: arp -s <IP address> <Ethernet address> <w95host IP address>, where <w95host IP address> is the IP address of your Windows 95 host.

When you execute the ping command for the first time, you will experience a significantly longer response time than is usual.

By using the arp -d command, the static entry in the arp table is removed from the host's cache memory.

Setting the print server's IP address using ARP in UNIX

Follow the instructions below to set the IP address using ARP:

Type the following commands in the shell window:

```
arp -s <host name> <Ethernet address> temp
ping <host name>
```

Example:

```
arp -s npsname 00:40:8c:10:00:86 temp
ping npsname
```

The host will return `npsname is alive`, or a similar message. This indicates that the address has been set and that communication is established.

Notes:

If the host name has not been mapped to an IP address, simply replace the host name entry with the IP address in the example above.

The ARP command varies between different UNIX systems. Some BSD type systems expect the host name and node address in reverse order. Furthermore IBM AIX systems will require the additional argument `ether`.
For example:
`arp -s ether <host name> 00:40:8c:10:00:86 temp`

When you execute the `ping` command for the first time, you may experience a significantly longer response time than is usual.

Setting the print server's IP address using RARP in UNIX

Follow the instructions below to set the IP address using RARP:

1. Append the following line to your Ethernet Address table. This is typically located in the `/etc/ethers` file:

```
<Ethernet address> <host name>
```

Example:

```
00:40:8c:10:00:86 npsname
```

2. Update, if necessary, your host table and alias name databases, as required by your system.

3. If it is not already running, start the RARP daemon. This is typically performed using the `rarpd -a` command.
4. Restart the AXIS 5400+ to download the IP address.

Notes:

If the host name has not been mapped to an IP address, simply replace the host name entry with the IP address in the example above.

If you are using IBM AIX, you will probably not have access to a RARP daemon. If this is the case, you can use either the ARP or BOOTP methods instead.

Setting the print server's IP address using BOOTP in UNIX

Follow the instructions below to set the IP address using BOOTP:

1. Append the following entry to your boot table. This is typically performed by editing the file: `/etc/bootptab`

```
<host name>:ht=<hardware type>:vm=<vendor magic>:\
:ha=<hardware address>:ip=<IP address>:\
:sm=<subnet mask>:gw=<gateway field>
```

Example:

```
npsname:ht=ether:vm=rfc1048:\
:ha=00408c100086:ip=192.168.3.191:\
:sm=255.255.255.0:gw=192.168.1.1
```

Notes:

Enter the `ht` and `vm` fields exactly as shown in the example.

The `ha` field is the Ethernet address/node address and the `ip` field is the IP address of your AXIS 5400+.

The `gw` and `sm` fields correspond to the default router address and subnet mask.

If the host name has not been mapped to an IP address, simply replace the host name entry with the IP address in the example above.

2. If necessary, update your host table and alias name databases, as required by your system.

3. If it is not already running, start the BOOTP daemon. This is typically performed using the `bootpd` command.
4. Restart the AXIS 5400+ to download the IP address, default router address, and subnet mask.

The AXIS 5400+ can automatically download a customized config file from a TFTP server. Just add the name of the config file and the TFTP server's IP address to your boot table. The config file is downloaded immediately after the AXIS 5400+ receives its IP address.

DHCP and Auto-IP

Auto-IP is another tool for setting the IP-address of the print server in the absence of a DHCP server.

If you have a DHCP server running on your network, the AXIS 5400+ will receive an IP address immediately after you have connected it to the network. In the absence of a DHCP server, your AXIS 5400+ print server will automatically be assigned an IP-address through integrated Auto-IP. The Auto-IP function is enabled by default and does not require any configuration by the user.

Section 4 Setting Up - Windows

Having connected the AXIS 5400+ to your network, as described in *Connecting a printer to the Ethernet Network*, on page 19, this section describes how to install the AXIS 5400+ in the Windows environment. Identify your Windows platform and follow the installing instructions from the list below.

Windows Platform	Printing protocol	See ...
Windows 95, Windows 98	TCP/IP	<ol style="list-style-type: none"> 1. <i>AXIS Print System Version 1.20 Overview</i>, on page 33 2. <i>TCP/IP Printing in Windows 95, 98, NT and 2000</i>, on page 34
	NetBIOS/NetBEUI	<ol style="list-style-type: none"> 1. <i>AXIS Print System Version 1.20 Overview</i>, on page 33 2. <i>Installing NetBIOS/NetBEUI printers in Windows 95/98</i>, on page 37
Windows NT 4.0, Windows 2000	TCP/IP	<ol style="list-style-type: none"> 1. <i>AXIS Print System Version 1.20 Overview</i>, on page 33 2. <i>TCP/IP Printing in Windows 95, 98, NT and 2000</i>, on page 34
	NetBIOS/NetBEUI	<ol style="list-style-type: none"> 1. <i>AXIS Print System Version 1.20 Overview</i>, on page 33 2. <i>Installing NetBIOS/NetBEUI printers in Windows NT 4.0/2000</i>, on page 39
Windows NT 3.5x	TCP/IP	<ol style="list-style-type: none"> 1. <i>AXIS Print Monitor Overview</i>, on page 41 2. <i>Installing TCP/IP Printers in Windows NT 3.5x</i>, on page 42
	NetBIOS/NetBEUI	<ol style="list-style-type: none"> 1. <i>AXIS Print Monitor Overview</i>, on page 41 2. <i>Installing NetBIOS/NetBEUI Printers in Windows NT 3.5x</i>, on page 44
Windows 3.1 & Windows for Workgroups	NetBIOS/NetBEUI	<ol style="list-style-type: none"> 1. <i>AXIS Print Utility for Windows Overview</i>, on page 46 2. <i>Windows 3.1 and Windows for Workgroups</i>, on page 49

If you intend to use the AXIS 5400+ in a multiprotocol environment, you should also refer to the following sections:

Section 5 Setting Up - NetWare, on page 53

Section 6 Setting Up - OS/2, on page 66

Section 7 Setting Up - Macintosh, on page 72

Section 8 Setting Up - UNIX, on page 78

AXIS Print System Version 1.20 Overview

AXIS Print System version 1.20 is described in this User's Manual. To obtain information on earlier AXIS Print System versions, see earlier revisions of this User's Manual, available on the Axis Communications web site: <http://www.axis.com>

AXIS Print System is the recommended tool to use for network printing over TCP/IP in Windows 95, Windows 98, Windows NT 4.0 and Windows 2000. Printers that you install from AXIS Print System are automatically added to **Start | Settings | Printers** in Windows. AXIS Print System has been developed for peer-to-peer printing, allowing your print jobs to be sent directly to the AXIS 5400+.

AXIS Print Monitor is integrated into AXIS Print System and is recommended for NetBIOS/NetBEUI printing.

Peer-to-Peer Printing In a Peer-to-Peer network, AXIS Print System needs to be installed on each workstation. Once installed, AXIS Print System allows you to access all network printers, just as if they were connected directly to your workstation. Peer-to-peer printing offers the following benefits:

- You can easily monitor the status of your printers
- You do not have to rely on a server.

Client-Server Printing AXIS Print System needs only to be installed on one server to perform client-server printing. The installed printers must be configured to be shared to allow clients to use them. Pop-up messages should not be enabled on the server, as they will not be displayed on the client platforms.

TCP/IP Printing in Windows 95, 98, NT and 2000

Install AXIS Print System ver. 1.20 on your Windows 95, 98, NT or 2000 client, if you have not already done so. This software can be downloaded from the AXIS Product CD or from the Axis web <http://www.axis.com>. To enable printing in the TCP/IP environment, you must ensure that the TCP/IP protocol is enabled on your client.

Set the print server's
IP address

See *Assigning an IP address*, on page 22.

Add a printer to 'My
Printers'

The network printers and Axis print servers that are available in your network are displayed in the **Available Printers/Print Servers** window. Only printers connected to Axis print servers with firmware versions 6.00 or higher will appear in the **Available Printers/Print Servers** window.

Follow these instructions to add a network printer to **My Printers**:

1. Select the **Available Printers/Print Servers** tab.
2. Select the network printer you wish to add to your **My Printer** list and click the **Add to My Printers** button or select **Add (Typical) to My Printers** from the **Printer** menu. The AXIS Print System Add Printer Wizard will start. Follow the instructions given on the screen in order to install an appropriate driver.

3. When you are finished the printer will be installed on your computer. You can see the printer in the **My Printers** window of AXIS Print System as well as in the **Printers** folder of the Windows operating system.

Select Add (Custom) to My Printers in Step 2 if you want to share the printer with other users (only for Windows NT and Windows 2000) or change any of the pre-defined settings prior to installation.

Changing print server settings

If you want to change the default name or the password of the AXIS 5400+, click **Printer | Web Configuration** from the AXIS Print System interface. This will launch a web browser, displaying the internal web pages of your Axis print server. From the **user-mode**, click the **Configuration Wizard** for assistance. Refer to *Using a Web browser*, on page 93 for detailed information.

Search for Print Servers on Your Network

If you wish to use an Axis print server/network printer that does not appear in your **Available Printers/Print Servers** view, proceed with the following steps:

1. Choose **Printer | Add Undetected Printer**. A wizard will open.
2. Enter the IP address and TCP port number of the print server and click **Next**.
3. Next, the wizard will suggest a suitable driver for the network printer you wish to install. Follow the instruction on the screen to finish the configuration. The network printer will show up in the **My Printers** view when the configuration is complete.

Print servers that contain old firmware (pre-6.00), will NOT show up in the **Available Printers/Print Servers** view. The best way to solve this is simply to upgrade the print server with firmware 6.00 or higher, which can be obtained (free of charge) from the Axis Communications web: <http://www.axis.com>

Printer Driver Installation

To install a printer driver for your network printer:

1. Select a network printer from the **Available Printers/Print Servers** list and choose **Printer | Add (Typical) to My Printers** or **Printer | Add (Custom) to My Printers** (recommended if you want to share printers among users).
2. AXIS Print System will suggest which driver to use for the printer you have chosen. It will appear in the **Suggested drivers by AXIS Print System** field. Highlight a driver in the list and click **Next>** or browse to an alternative location to search for drivers.
3. Enter a name for the printer (if you wish), follow the instructions on the screen and click **Finish** to complete the installation.

Note:

You can share the printer drivers you have installed with other AXIS Print System users on your network. In AXIS Print System, check the Enable Driver Sharing box in My Printers | Settings | Program Options | General.

Sharing Network Printers in Windows NT & 2000

Follow these instructions to share a network printer with other users, i.e. to make it available for use for more than one person on a network:

1. From the **Available Printers/Print Servers** view, highlight a printer you want to share.
2. Click **Printer | Add(Custom) to My Printers**. This will start a driver scan on your network.
3. Choose a suitable printer driver and click **Next**. (You may need to select a path to locate the printer driver).
4. Click the **Shared as** radio-button and assign a share name to the network printer.
5. Click **Finish**. The shared printer will appear in the **My Printers** view.

Note:

To monitor which network printers are shared on your network, choose Settings | Customize View | from the 'Available Printers/Print Servers' view and add 'Share Name' to the 'Columns Shown' list. A 'Share Name' column will then appear in the 'My Printers' view, displaying shared network printers.

Installing Shared Printers on your Windows 95/98 client

Follow the instructions below to install shared printers on your Windows 95/98 client:

1. Start the Add Printer Wizard by selecting **Settings - Printers** from the **Start** menu and double-click the **Add Printer** icon.
2. Click **Next>** in the first dialog.
3. Select **Network Print Server** and click **Next>**.
4. Enter the path for the network printer or browse the network to find and select it.
5. Choose the appropriate printer driver for your printer. If the desired printer driver appears in the displayed **Manufacturers** and **Printer Models** lists, highlight your selection, click **Next>** and proceed directly to step 8. It is only necessary to perform steps 6-7 if your printer does not appear in the model list.

Note:

Even if the desired printer is available in the **Manufacturers** and **Printer Models** list, you are advised to use the printer driver provided with the printer. This assures you of the latest driver software.

6. Click the **Have Disk...** button. Insert the printer driver diskette/CD that was provided with your printer, select the appropriate diskette/CD drive and click **OK**.
7. Select the printer driver you want to install and click **Next>**.
8. Enter an appropriate name for your printer and click **Next>**.
9. Choose whether you wish to produce a test page and click **Finish**.

Installing NetBIOS/NetBEUI printers in Windows 95/98

Follow the procedures below to install Axis NetBIOS/NetBEUI printer ports on a Windows 95/98 workstation:

1. To start the Add Printer Wizard, select **Settings - Printers** from the Windows **Start** menu and double-click the **Add Printer** icon.
2. After clicking **Next>** in the first dialog, the Wizard asks you to select **Local printer** or **Network printer**. Select **Local printer** as the print server emulates a local printer port. Click **Next>**.

3. Choose the appropriate printer driver for your printer. If the desired printer driver appears in the displayed **Manufacturers and Printer Models** lists, highlight your selection, click **Next>** and proceed directly to step 6. It is only necessary to perform steps 4 - 5 if your printer does not appear in the model list.

Note:

Even if the desired printer is available in the Manufacturers and Printer Models list, you are advised to use the printer driver provided with the printer. This assures you of the latest driver software.

4. Click the **Have Disk...** button. Insert the printer driver diskette/CD that was provided with your printer, select the appropriate diskette/CD drive and click **OK**.
5. Select the printer driver you want to install and click **Next>**.
6. Select the AXIS Printer Port from the Available Ports list. The port name appears as <name>.LP1, where <name> is AX followed by the last six digits of the AXIS 5400+ serial number, e.g. xxx (default serial no.). Click the **Configure Port** button.
7. Choose whether error condition pop-up messages are to be displayed by checking the box in the **Configure AXIS Ports** dialog. Define the frequency at which the error messages should be displayed after retry. Click **OK>**.
8. Enter an appropriate name for your printer and click **Next>**.
9. Choose whether you wish to produce a test page and click **Finish**.

**Installing
NetBIOS/NetBEUI
printers in Windows
NT 4.0/2000**

Follow the procedure below to install Axis Printer Ports from a Windows NT 4.0 or Windows 2000 workstation:

1. To start the Add Printer Wizard, select **Settings - Printers** from the **Start** menu and double-click the **Add Printer** icon.
2. *Windows 2000 only:* Start the installation by clicking **Next>**.
3. The Wizard asks you to select My Computer or Network printer server. Select **My Computer**, as the AXIS 5400+ emulates a local printer port.
4. Click **Add Port...** in the Available ports dialog, select **AXIS Port** and click **New Port...**
5. Select **NetBIOS/NetBEUI** as your choice of network protocol and click **OK**.
6. Select the **AXIS Port** you want to add. The port appears as <name>.LP1, where <name> is AX followed by the last six digits of the AXIS 5400+ serial number, e.g. xxx (default serial no.). Click **OK**.
7. Close the Printer Ports window.
8. Click the **Configure Port...** button. Choose whether error condition pop-up messages are to be displayed by checking the box in the Configure Axis Ports dialog. Define the frequency at which the error messages should be displayed after retry. Click **OK**. Continue the installation by clicking **Next>**.
9. Choose the appropriate printer driver for your printer. Click **Next>** and proceed directly to step 10. It is only necessary to perform steps 9-10 if your printer does not appear in the list.

Note:

Even if the desired printer is available in the Manufacturers and Printer Models list, you are advised to use the printer driver provided with the printer. This assures you of the latest driver software.

10. Click the **Have Disk...** button. Insert the printer driver diskette/CD that was provided with your printer, select the appropriate diskette/CD drive and click **OK**.

11. Select the printer driver you want to install and click **Next>**.
12. Enter an appropriate name for your printer and click **Next>**.
13. Choose whether you want to share the printer with other network users and click **Next>**.
14. Choose whether you want to produce a test page and then click **Finish**.

Using the Microsoft LPD monitor with Windows NT 4.0

This section describes how to set up a Windows NT Server v4.0 for LPR printing over the TCP/IP protocol, using the built-in Microsoft LPD monitor.

Basic Setup

If you have not already done so, you should perform the TCP/IP basic setup procedures prior to installing a printer for LPD printing. These procedures are defined in *Assigning an IP address*, on page 22 and onwards.

Preparing for LPR/LPD printing

In the Control Panel, click the Network icon. If the TCP/IP Printing entry appears, then TCP/IP is already installed. Close the Network folder and skip to *Installing a printer*, on page 41.

Follow the following steps to prepare for LPR/LPD printing:

1. Open the **Control Panel** and click the **Network** icon.
2. Select **Protocols**.
3. Add **TCP/IP Protocol**.
4. Select **Services**.
5. Add **Microsoft TCP/IP Printing**.

- Installing a printer** Follow the instructions below to install a printer for LPD printing:
1. Open the **Control Panel** and open the 'Printers' folder.
 2. Click **Add Printer**, select **My Computer** and then go to **Next**.
 3. Select **Add Port**. In Printer Ports, choose **LPR Port** and then click **New Port**.
 4. In Add LPR compatible printer, enter the host name or IP address of the AXIS 5400+ as the print server to provide LPD.
 5. Enter e.g. 'pr1', 'pr2', 'lpt1' as the name of the printers on that server.
 6. Choose a suitable printer driver for your printer and go to **Next**.
 7. Enter a printer name and go to **Next**.
 8. Enter a share name.
 9. Click **Next** and then **Finish**.

AXIS Print Monitor Overview

AXIS Print Monitor is the recommended tool to use for network printing in Windows NT 3.5x environments. It allows AXIS Network Print Servers to be connected in the same simple fashion as a local printer port and once installed, is automatically initialized upon system startup. AXIS Print Monitor has been developed for peer-to-peer printing, allowing your print jobs to be sent directly to the print server.

Printing Environments AXIS Print Monitor supports printing over NetBIOS/NetBEUI and TCP/IP (LPR). To enable printing in these environments, please ensure that the desired printing protocols are running on your client.

Peer-to-Peer Printing The AXIS Print Monitor needs to be installed on each workstation to perform peer-to-peer printing. Once installed, the AXIS Print Monitor allows you to access all network printers, just as if they were connected directly to your workstation. Peer-to-peer printing offers the following benefits:

- You can easily monitor the status of your printers, by enabling error condition pop-up messages.
- You do not have to rely on a server.

Client-Server Printing AXIS Print Monitor needs only to be installed on one server to perform client-server printing. The installed printers must be configured to be shared to allow clients to use them. Pop-up messages should not be enabled on the server as they will not be displayed on the client platforms.

Note:

AXIS Print Monitor can be used for DOS printing. Please refer to the AXIS Print Monitor's Readme file for instructions. The readme file is located in the same folder where AXIS Print Monitor is installed on your PC.

**Installing TCP/IP
Printers in
Windows NT 3.5x**

Install the AXIS Print Monitor software on your Windows NT 3.5x client, if you have not already done so. AXIS Print Monitor can be downloaded from the AXIS Product CD or from the Axis web site <http://www.axis.com>

To be able to print using LPR, you must have installed the AXIS 5400+ in the TCP/IP environment as described in *Assigning an IP address*, on page 22 and the TCP/IP protocol must be enabled on your client.

1. Open the Print Manager and select **Create Printer** from the **Printer** menu.
2. Enter an appropriate name in the Printer Name field.

3. Choose an appropriate printer driver for your printer from the drop-down Driver list. If the desired printer driver already appears in the displayed Manufacturers and Printer Models list dialog, proceed directly to step 6. It is only necessary to perform steps 4 - 5 if your printer does not appear in the model list.

Note:

Even if the desired printer is available in the Manufacturers and Printer Models list, you are advised to use the printer driver provided with your printer. This assures you of the latest driver software.

4. Select **Other...** in the driver list. Insert the printer driver diskette/CD that was provided with your printer, select the diskette/CD drive and click **OK**.
5. Select the printer driver you want to install.
6. Select **Other...** from the "Print to" drop-down list.
7. Select **AXIS Port** from the list of available Print Monitors in the Print Destination dialog. Click **OK**.
8. Select **LPR (TCP/IP)** as your choice of network protocol and click **OK**.
9. From the Add LPR port dialog, enter the IP address or host name of your print server and define a Logical printer name. Click **OK** to return to the Create Printer dialog.
10. Select the AXIS LPR port you wish to use from the "Print to" drop-down list. The ports appear as <port name>@<IP address> or <port name>@<host name>, e.g. PR1@192.36.254.101.
11. Click the **Settings** button. Choose whether error condition pop-up messages are to be displayed by checking the box in the Configure AXIS LPR Ports dialog. Define the frequency at which the error messages should be displayed after retry. Click **OK** to return to the Create Printer dialog.
12. Having selected and configured the chosen port, click **Next>**.

Installing NetBIOS/NetBEUI Printers in Windows NT 3.5x:

13. Select whether you want to share the printer with other network users. Click **OK**.

The printer properties are displayed in an appropriate dialog that allows you to refine your printer setup.

The Axis printer is now installed and will appear as an icon in the Print Manager.

Install the AXIS Print Monitor software on your Windows NT3.5x client, if you have not already done so. AXIS Print Monitor can be downloaded from the AXIS Product CD or from the Axis web <http://www.axis.com/>.

Follow the procedure below to install Axis printer ports from a Windows NT 3.5x workstation:

1. Open the Print Manager and select **Create Printer** from the **Printer** menu.
2. Enter an appropriate name in the Printer Name field.
3. Choose an appropriate printer driver for your printer from the Manufacturers and Printer Models list displayed and then proceed directly to step 6. Please note that it is only necessary to perform steps 4 - 5 if your printer does not appear in the model list.

Note:

Even if the desired printer is available in the Manufacturer and Printer Models list, you are advised to use the printer driver provided with your printer. This assures you of the latest driver software.

4. Select **Other...** in the driver list. Insert the printer driver diskette/CD that was provided with your printer, select the appropriate diskette/CD drive and click **OK**.
5. Select the printer driver you want to install.
6. Select **Other...** in the "Print to" list box.
7. Select **Axis Port** from the list of available Print Monitors and click **OK**.

8. Select the AXIS Port you wish to add and then click **OK**. The port appears as <name>.LP1, where <name> is AX followed by the last six digits of the AXIS 5400+ serial number, e.g. xxx (default serial no.).
9. Click on **Settings**. Choose whether error condition pop-up messages are to be displayed by checking the box in the Configure Axis Ports dialog. Click **OK**.

Using the Microsoft LPD monitor with Window NT 3.5x

This section describes how to set up a Windows NT Server v3.5 and v3.51 for LPD printing over the TCP/IP protocol, using the built-in Microsoft LPD monitor.

Basic Setup

If you have not already done so, you should perform the TCP/IP basic setup procedures prior to installing a printer for LPD printing. These procedures are defined in *Assigning an IP address*, on page 22 and onwards.

Install the TCP/IP Protocol Stack

In the Control Panel, click the Network icon. If the TCP/IP Printing entry appears, then TCP/IP is already installed. Close the Network folder and continue with *Installing a printer* on the next page.

Follow these steps to install the TCP/IP protocol stack:

1. In the **Control Panel**, select **Network**.
2. Click **Add Software...**
3. Select "TCP/IP Protocol and related components" and then click **Continue**.
4. Check "TCP/IP Network Printing Support" and then click **Continue**.
5. Select path and then click **Continue**.
6. Click **OK** in the Network Settings dialog box.

Installing a Printer Follow the following step-by-step instructions to install a printer for LPD printing.

1. In the **Control Panel**, click the **Print Manager**.
2. In the **Printer** menu, select **Create Printer**.
3. In the Printer Name field, type a name for your printer.
4. Choose a suitable printer driver for your printer.
5. In the Print to field, select **Other...**
6. In the Print Destinations dialog, choose **LPR Port** and then click **OK**. The Add LPR Compatible Printer dialog will now appear.
7. In the Name or Address field, type the IP address or the host name of your AXIS 5400+. If you use a host name, this must be defined in the *hosts* file on your server prior to the installation. This file is normally located in */winnt35/system32/drivers/etc/hosts*.
8. In the Name of Printer on the Machine field, type the logical printer number you want to use, e.g. pr1.
9. Click **OK** to complete the installation.

AXIS Print Utility for Windows Overview



AXIS Print Utility for Windows is the tool to use for network printing in Windows for Workgroups and Windows 3.1 environments.

AXIS Print Utility for Windows can be downloaded from the *software\prt_srv\utility\axpuw\latest* folder on the AXIS Product CD or from the Axis web <http://www.axis.com/>. Install this utility now if you have not already done so.

**About
 AXIS Print Utility
 for Windows**

AXIS Print Utility for Windows is an application for network printing in the Windows environment. It allows you to:

- Install and maintain AXIS 5400+ printer ports as Windows printer ports.
- Capture and monitor print jobs directed to the AXIS 5400+ ports.

Print jobs are directed through a spool directory located on your local hard disk (peer-to-peer mode), or on the file server (client-server mode). The printer port status of your AXIS 5400+ can be monitored and pop-up notification messages can be generated, keeping you informed of completed print jobs or any problem condition.

For more information about AXIS Print Utility for Windows, see the on-line help.

Notes:

Microsoft Network (NetBIOS/NetBEUI) must be running when using AXIS Print Utility for Windows.

AXIS Print Utility for Windows must be running when printing in peer-to-peer mode.

The AXIS Print Utility for Windows is not needed on the client platforms for client-server printing.

If you want to change the default name of your AXIS 5400+ or amend any of the default parameters, you can do so using a standard Web browser. Refer to *Section 9 Management & Configuration*, on page 92.

Peer-to-Peer vs. Client-Server Printing

Windows for Workgroups and Windows 3.1 users, requiring access to a network printer in peer-to-peer mode, will need to install the AXIS Print Utility for Windows software onto their workstation. Users may then add the required network printer to their systems and use the printer as if it was connected directly to their workstation. Peer-to-peer printing offers the following benefits:

- You can monitor the printer status at all times and be notified when print jobs are completed.
- You do not have to rely on a server.

Client-server operation requires only one user to install the AXIS Print Utility for Windows software onto their workstation. This user then adds the printer to his or her workstation (the server) and shares the printer with other users on the network. The other users (the clients) can connect to the printer through the server via the Windows Print Manager.

The client-server mode provides a way of maintaining queue ordering and job priority, but at a price. This is because:

- You cannot receive printer status or print job notification.
- The workstation, setup as the server, must be available at all times. It must also have the capacity to handle the print jobs that pass through it.

Notes:

When using the client-server mode, other users can still install the AXIS Print Utility for Windows software, for printing directly to the network printer in peer-to-peer mode.

When using the client-server mode, it is recommended that the server is setup only on a Windows for Workgroups workstation.

Windows 3.1 and Windows for Workgroups

Windows 3.1

In order to print to a network printer, Windows 3.1 requires the installation of network support, such as the LAN Server or LAN Manager Workstation software. When installed, proceed as described under Windows for Workgroups below.

Windows for Workgroups

Peer-to-Peer Printing

Follow the instructions below to install your AXIS 5400+ for peer-to-peer printing at a Windows for Workgroups workstation:

1. Double-click the **AXIS Print Utility** icon.
2. In the **Port** menu, click **Add**.
3. In the NPS Port list, select the AXIS 5400+ port. The port appears as <name>.LP1, where <name> is AX followed by the last six digits of the AXIS 5400+ serial number, e.g. xxx.
4. Accept or change the suggested Windows port name and type any required comment in the Description field. Make a note of the Windows port name as you will need this later, then click **OK** to install the Windows port.
5. In the **Port** menu, click **Connect...** to bring up the Windows Printers dialog.
6. Select a printer driver from the list of Installed Printers (or click **Add>>** to install a new driver), then click **Connect...**
7. Select the Windows port name from step 4 above (this name can be found at the bottom of the Ports list).
8. Click **OK** to close the Connect dialog, and **Close** to close Printers.

The setup is completed and you can now print through your AXIS 5400+.

Notes:

AXIS Print Utility for Windows must be running when you print through your AXIS 5400+. It is strongly recommended that you copy the AXIS Print Utility icon into your StartUp folder.

To enable TCP/IP printing in Windows 3.1 and Windows for Workgroups environments, you must use a shareware LPR spooler that can be downloaded from ftp://ftp.axis.com/pub/axis/software/prt_srv/utility/wlprs/.

**Client-Server Printing:
Server Setup**

Follow the instructions below to install your AXIS 5400+ for client-server printing at a Windows for Workgroups server:

1. Choose a workstation that you want to use as a server for network printing. The server must be available at all times and must have sufficient hard disk space for spooling print jobs.
2. Open **Network Setup**, click **Sharing...**, check the **I want to be able to allow others to print to my printer(s)** box.
3. Install AXIS Print Utility for Windows on the server.
4. Set up your AXIS 5400+ as described under *Peer-to-Peer Printing*, on page 49.
5. Open **Print Manager** and select your printer.
6. In the **Printer** menu, select **Share Printer As...**
7. Type a printer name in the **Share As** field (this is the printer name seen by the clients, see Client Setup below).
Check the **Re-share at Startup** box, then click **OK**.

The server setup is now completed.

Note:

The AXIS Print Utility for Windows must be running when you print through your AXIS 5400+. It is strongly recommended that you copy the AXIS Print Utility icon into your StartUp folder.

Client-Server Printing: Follow these steps to use your AXIS 5400+ for client-server printing at a Windows for Workgroups client:
Client Setup

1. In the **Control Panel**, select **Printers**.
2. Select a printer driver from the list of Installed Printers, or click **Add>>** to install a new driver. Click **Connect...**
3. Select **Network...** in the Device Name list, select a local port (LPT1 - LPT3) to redirect to your network printer.
4. In the **Show Shared Printers on list**, select the server from Server Setup above.
5. In the Shared Printers list, select the printer you want to use.
6. Click **OK**, **OK** and **Close**.
7. Exit the Control Panel.

The client setup is completed and you can now print through your AXIS 5400+.

Windows Clients using LANtastic

From any Windows client, the AXIS 5400+ can also be used for network printing in LANtastic environments.

LANtastic users can use the AXIS Utilities in exactly the same manner as described in the preceding Windows sections, using a choice of Axis utility software that is guided by the type of Windows client employed:

- Refer to *AXIS Print Utility for Windows Overview*, on page 46, if you are using a Windows for Workgroups client.
- Refer to *AXIS Print Monitor Overview*, on page 41, if you are using a Windows 95, Windows 98 or Windows NT client.

Note:

Make sure that your LANtastic client is running the desired printing protocols.

Section 5 Setting Up - NetWare

This section describes how to continue the installation of the AXIS 5400+ in the NetWare environment. Identify which transport protocol you are running on your network and which installation method you should use. Continue the installation by selecting the appropriate installing instructions from the table below:

Installation method	Transport protocol	Action
NDPS	TCP/IP	See Setup using NDPS , on page 54
	IPX/SPX	Proceed with Installing the AXIS 5400+ in an NDPS environments , on page 54.
Queue based printing	IPX/SPX Basic Configuration	To install using the AXIS NetPilot Installation Wizard, see Basic Setup with AXIS NetPilot , on page 56
	IPX/SPX Advanced configuration	If you need a more advanced installation that is not covered by the AXIS NetPilot Installation Wizard, continue to Advanced Installation using AXIS NetPilot , on page 59
	Pure IP	See Basic Queue-based printing over IP , on page 62

If you intend to operate your AXIS 5400+ in a multi-protocol, mixed environment, you should also proceed to the other relevant sections in this manual, namely:



Section 4 Setting Up - Windows, on page 32

Section 6 Setting Up - OS/2, on page 66

Section 7 Setting Up - Macintosh, on page 72

Section 8 Setting Up - UNIX, on page 78

Setup using NDPS

The AXIS 5400+ supports Novell Distributed Print Services (NDPS), which is Novell's new generation architecture for printing and printer administration. You can run NDPS over Pure IP (TCP/IP) or IPX/SPX.

Before the AXIS 5400+ can be installed, make sure that NDPS is installed and a Broker is loaded on your NetWare file server.

AXIS 5400+ uses the AXIS NDPS Gateway for printing in networks using either IP or IPX as transport protocols. The printer gateways are included with the NDPS software (from version 5.1 and up) and are automatically installed together with NDPS.

Notes:

NDPS requires that you run NetWare 4.11 or higher.

Pure IP is only supported by NetWare 5 or higher.

Installing the AXIS 5400+ in an NDPS environments

Having assigned an IP address to the AXIS 5400+ as described in *Assigning an IP address*, on page 22, you are now ready to install the AXIS 5400+ for NDPS printing. You can select to install the connected printers as public or controlled access printers. Follow the instructions below to install the AXIS 5400+ using NDPS:

Notes:

The HP-JETADMIN parameter of the AXIS 5400+ must be set to YES in order for the communication between the AXIS 5400+ and the NDPS gateway to be enabled.

If you do not have an NDPS Manager object available, start out with creating one in the NetWare Administrator.

- Public Access** To create a public access printer using the NDPS Manager object in your NetWare administrator, do the following:
1. Double-click on the NDPS Manager object you will be using to control the Printer Agents.
 2. At the Identification page for the NDPS Manager, click the printer **Agent List** button. The **Printer Agent List** dialog will appear.
 3. Click **New**. The **Create Printer Agent** dialog will appear.
 4. Type a name of your choice in the **NDPS Printer Agent** field.
 5. Choose the Axis Gateway configuration in the **Gateway Type** window. Select TCP/IP or IPX as transport protocol. (See Note below).
 6. Click **OK**.
 7. Once you have completed the required tasks, you are ready to print in your NDPS environment. Use the Novell Print Manager to install the Public Access Printer on the client workstation.

Notes:

The Public Access print servers are immediately available for everyone on the network.

The AXIS Gateway Configuration utility is an installation and configuration tool for NDPS printers in the Netware environment. The Axis Gateway will appear in NetWare 5.1 and later releases. To use the Axis Gateway with earlier versions of NetWare, you can download the AXIS Gateway Configuration utility from www.axis.com.

To print using TCP/IP, Axis print server firmware 6.1 or later is required. In order to print using IPX/SPX, Axis print server firmware 5.51 or later is needed.

- Controlled Access**
1. Make sure that the HP NDPS Gateway is **not** configured to automatically create a public access printer, before you connect the AXIS 5400+ to the network.
 2. Connect the AXIS 5400+ to the NetWare network.

3. Use the NetWare Administrator to create an NDPS printer as an object in the NDS Tree.
4. Create a new Printer Agent (PA) or convert a Public Access Printer to a Controlled one.
5. Choose the Axis Gateway configuration. Select TCP/IP or IPX as transport protocol and complete required tasks.
6. You are now ready to print in your NDPS environment. Your printer will appear as an NDS object in the Directory Tree and will offer a full range of network security options.

Use the Novell Print Manager to install the controlled access printer on a client workstation.

Basic Setup with **AXIS NetPilot**

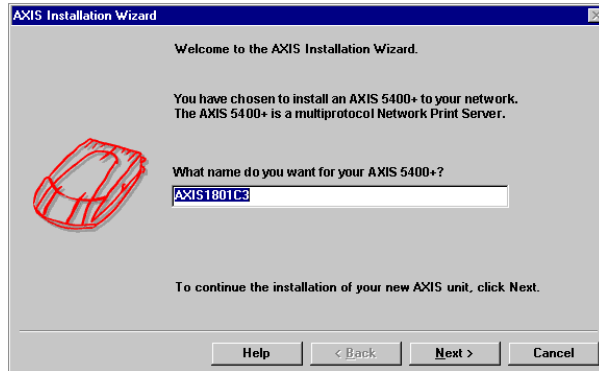
Follow the instructions available on the AXIS Product CD to install the AXIS NetPilot software on to your computer. AXIS NetPilot runs on any of the Windows platforms; Windows 3.x, Windows 95, Windows 98, Windows NT, Windows 2000, Windows ME and Windows for Workgroups.

Starting the Installation

Follow the instructions below to install the AXIS 5400+ with AXIS NetPilot:

1. Start AXIS NetPilot by double-clicking the NetPilot icon, which is located in the folder where you installed AXIS NetPilot.
2. Locate the AXIS 5400+ in the 'New Axis Units' folder. Select it and click the **Install** button on the AXIS NetPilot toolbar. If your network is large, it could take a few seconds before the print server appears in the folder.

- Choose the **with Installation Wizard** option and click **OK**. The following screen appears:



The AXIS NetPilot Installation Wizard Main window

The AXIS NetPilot Installation Wizard guides you through the installation process. The following options are available:

Note:

The number of options varies according to the number of environments you enable.

- Print Server Name** The default print server name consists of the characters 'AXIS' followed by the last six digits of the serial number. If you want to change the print server name, just type the new name in the available text field.
- Environments** Choose which networking environments you want to configure the AXIS 5400+ for, i.e. NetWare, TCP/IP, Windows & OS/2 or Macintosh. If your network comprises various different platforms, you can enable any combination of environments.
- NetWare NDS** Place NetWare Print Queues on a specific bindery server, or alternatively into an NDS Tree.
- The IP address** Choose the method the AXIS 5400+ should employ for obtaining an IP address. DHCP, ARP, RARP, BOOTP and Auto-IP are supported. You can also select to set the IP address manually. Refer to *Assigning an IP address*, on page 22 for further information about setting the IP address.

Print Queues The AXIS 5400+ uses the print server name followed by the printer port as the default Print Queue name and print server port name. If you want to change the default printer queue names, just type the new names in the available text fields.

Environment	Default Names
<i>NetWare</i>	<i>AXIS1A0003_LPT1_Q</i>
<i>Windows & OS/2</i>	<i>AX1A0003.LP1</i>
<i>AppleTalk</i>	<i>AXIS1A0003_LPT1</i>

Default Print Queue Names and Print Server Port Names for each operating environment.

Test Page The final user prompt in the Installation Wizard allows you to print a test page through NetWare. The test page displays the name of all the NetWare servers the AXIS 5400+ is connected to and shows the status of each connection.

Unless you want to connect or create additional printing queues, the installation for the NetWare environment is now completed.

Notes:

The parameters entered during installation are not permanent; they can be altered at any time according to your network printing requirements.

No serious or permanent damage will be caused if you make a mistake during installation. If you find, at any time, that printing is not satisfactory, the parameters can easily be changed to tune the system to your requirements.

For information on advanced functions, please refer to the AXIS Network Print Server Technical Reference. You can download this or other technical information over the Internet by accessing the Axis web: <http://www.axis.com/> or the AXIS Product CD.

Advanced Installation using AXIS NetPilot

Having installed your AXIS 5400+ print server in accordance with the basic installation procedures described in *Basic Setup with AXIS NetPilot*, on page 56, your AXIS 5400+ print server should now feature in the 'Network Print Servers' folder located in the AXIS NetPilot main window.

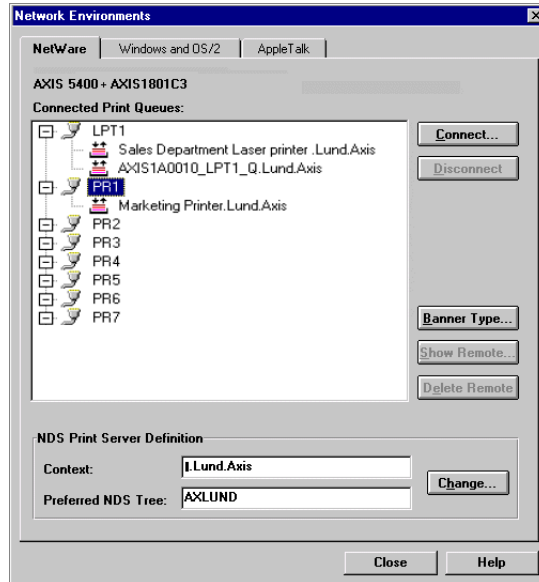
NetWare 'Network Environments' Window

The NetWare 'Network Environments' window allows you to connect additional print queues to your AXIS 5400+ as well as create new ones.

Follow the steps below to gain access to the NetWare 'Network Environments' window:

1. Select the required Network Print Server from the 'Network Print Server' folder.
2. Choose **Network** from the Setup menu or click on the **Network** icon on the AXIS NetPilot's toolbar.

3. If you are not logged on to your NetWare file server, a dialog box will ask you to log on.



The AXIS NetPilot 'NetWare Network Environments' window

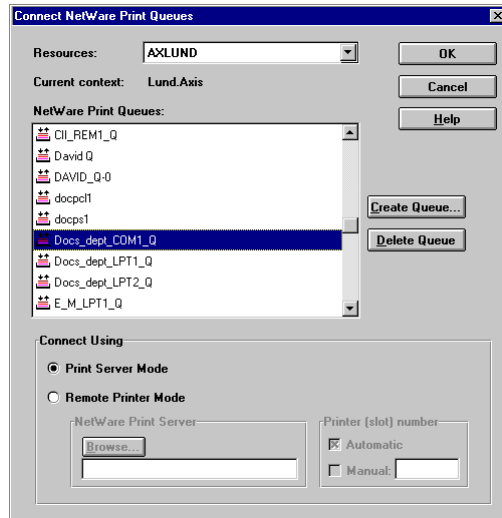
The AXIS 5400+ periodically updates the configuration by scanning the NDS tree or, in the case of NetWare versions 3.x, the designated file servers.

Connecting Print Queues

Follow the steps below to connect a print queue to the print server port:

1. Open the NetWare 'Network Environments' window.
2. Select the print server port you want to connect.

- Click the **Connect...** button. The Connect NetWare Print Queues window appears.



The AXIS NetPilot Connect NetWare Print Queues window

- Select the tree or server location of the print queue from the Resources box.
- Select an existing print queue to connect to the server port, or create a new print queue by clicking on **Create Queue...** If you have selected an existing queue, advance to step 8. Continue with step 6 only if you want to create a new queue.
- Type the queue name in the Create Queue dialog window. If you want to create a queue in the NDS tree you must also enter the name of the volume where the queue will be located. Click **OK**.
- Select the newly created queue from the queue list.
- Select **Print Server Mode** or **Remote Printer Mode**. If you selected Print Server Mode, advance directly to step 11, otherwise continue with step 9. Please refer to *Queue-based Printing Methods*, on page 65, for further information about the two printing methods.

9. Select an appropriate NetWare Print Server name, that will be associated with the AXIS 5400+ print server, by using the **Browse...** button.

Notes:

You cannot type or edit the name manually

Make sure that you have PSERVER.NLM running if you selected Remote Printer Mode in step 8.

10. If you want to define a remote printer number slot manually, check the **Manual** box and type the desired number in the box.
11. Click the **OK** button to return to the Network Environments window.

Basic Queue-based printing over IP

Axis print servers with software version 6.0 or later allow users to print in a Pure IP environment using traditional queue-based printing (which usually uses the IPX transport protocol). Note that only NDS queue based printing is supported.

In the NetWare Pure IP environment, you must use NetWare Administrator to create the printer, print server and queue objects.

Installing the AXIS 5400+

Follow the instructions below to install the AXIS 5400+ in the NetWare Pure IP environment:

1. Start the Configuration Wizard from the **User mode** in the AXIS 5400+ Web interface.
2. Click your way through the Wizard until reaching the **NetWare** page.

3. Set the three NDS **mode** parameters on the NetWare page:

- **PSERVER NDS Tree:**

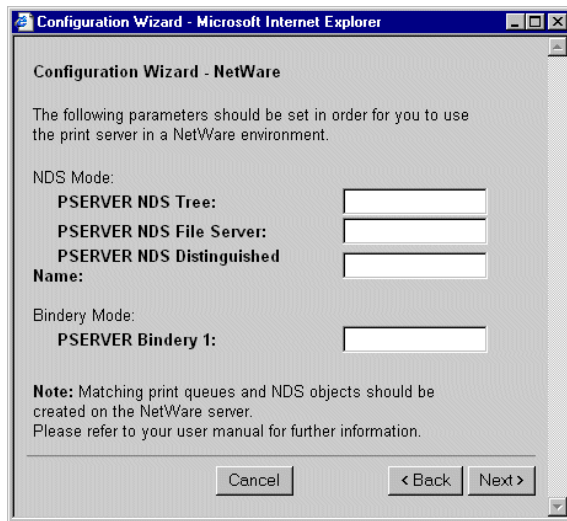
Example: NW5TREE

- **PSERVER NDS File Server:**

Example: FILESERVERNAME

- **PSERVER NDS Distinguished Name:**

Example: AXISXXXXXX.CONTEXT



Setting the PSERVER parameters in the AXIS 5400+ Web interface.

4. Use the NetWare Administrator to create the printer, print server and queue objects in the NDS tree and then link them together. The **Print Services Quick Setup (Non-NDPS)** utility can be used for this. Go to **Tools** in the **NetWare Administrator**.

5. Use the Add Printer Wizard on your workstation to install the printer on your client. Note that only NDS queue based PSERVER printing is supported. When installing, choose **Network Printer** and browse to the queue you have just created. Alternatively, choose **Local Printer** and select the queue you have just captured.

Any configuration and management of the AXIS 5400+ can be performed from any standard Web browser. Please refer to *Using a Web browser*, on page 93.

If both the IPX and IP protocols are enabled in your network and the print server uses DUAL_STACK (enabled by default) as its network transport protocol, then IPX will be chosen. To force the print server to use the IP transport protocol, go to your print server's web interface and choose **Admin | Detailed View | NetWare** and change the NetWare Transport Protocol from DUAL_STACK to IP_ONLY. Save and exit when finished.

Important!

In order for the print server to log in using the IP protocol, RCONAG6.NLM has to be loaded on a file server in a specified tree. If you have multiple trees, make sure that only the file server in the specific tree has RCONAG6.NLM loaded.

Note:

Pure IP requires that you run NetWare 5 or higher.

Queue-based Printing Methods

The following overview explains the advantages and limitations of the two supported queue-based printing methods.

Print Server Mode

The AXIS 5400+ logs in to a file server(s) and repeatedly polls the print queues for print jobs. In this fashion, the AXIS 5400+ emulates a NetWare print server, which is a workstation running PSERVER. It provides high printing speed with low network load and is the recommended mode for medium to large sized networks. Each print server in PSERVER mode takes one NetWare user license.

- Advantages**
 - High performance: up to 1 Mbyte/s.
- Limitations**
 - In bindery mode, this printing method requires a NetWare user licence for each AXIS 5400+ to file server link.

Remote Printer Mode

The AXIS 5400+ acts as Remote Printer for PSERVER.NLM running on the NetWare file server, or to a dedicated workstation running PSERVER.EXE. In this fashion, the AXIS 5400+ emulates a workstation running the NetWare remote printer software RPRINTER, or NPRINTER. This mode is only recommended for small networks where the number of NetWare user licences is a major issue.

- Advantages**
 - NetWare user licences are not required.
- Limitations**
 - Lower performance, typically 20 - 70 kbytes/s for NLM.
 - Higher network load.

Section 6 Setting Up - OS/2

Having connected the AXIS 5400+ to your network, as described in *Connecting a printer to the Ethernet Network*, on page 19, this section now describes how to set up your AXIS 5400+ for printing in the OS/2 environment.

Continue with the instructions presented in the table below:

Printing protocol	See ...
TCP/IP	TCP/IP Printing, on page 67
NetBIOS/NetBEUI	NetBIOS/NetBEUI Printing, on page 68

If you intend to operate your AXIS 5400+ in a multiprotocol environment, you should also proceed to the other relevant sections in this manual, namely:

Section 5 Setting Up - NetWare, on page 53

Section 4 Setting Up - Windows, on page 32

Section 7 Setting Up - Macintosh, on page 72

Section 8 Setting Up - UNIX, on page 78

TCP/IP Printing

Having assigned an IP address to the AXIS 5400+, as described in *Assigning an IP address*, on page 22, you are now ready to install it for TCP/IP printing in the OS/2 environment. The AXIS 5400+ supports LPR Printing using the lprportd service method.

Installing the AXIS 5400+

Follow the instructions below to install the AXIS 5400+ using the lprportd service method:

1. Open the **OS/2 System** window, select **TCP/IP** and **TCP/IP Configuration**.
2. Select **Printing**, type a number, e.g. 3, in the **Maximum number of LPD ports** field. The Remote print server and Remote print server's printer fields should remain empty.
3. Select **Autostart**, select **lprportd**, click the **Autostart** check box and select **Detached**.
4. Exit and Save.
5. Restart your OS/2 client.

Creating a print queue

Continue with the instructions below to create a print queue:

1. Open the **Template** group. Create a new printer from Templates by dragging the **Printer** icon to the desktop with the right mouse button.
2. Select a printer driver and double-click a free **Output port**, for instance **\PIPE\LPD0**.
3. Enter the host name or the IP address of the AXIS 5400+ in the **LPD server** field.
4. Enter one of the AXIS 5400+ logical printer names, for example **pr1**, in the **LPD printer** field.

NetBIOS/NetBEUI Printing

The AXIS Print Utility for OS/2 is the tool to use for NetBIOS/NetBEUI printing in OS/2 environments.

AXIS Print Utility for OS/2 is available from the *software\prt_srv\utility\axpu\latest* folder located on the AXIS Product CD. It can also be downloaded from the Axis web:

<http://www.axis.com>. Install this utility now if you have not already done so.

If you want to change the default name or any of the AXIS 5400+ default parameters, you can do so using any standard Web browser or AXIS NetPilot from any Windows platform that is connected to your network, or WinOS/2 window under OS/2.

Refer to *Section 9 Management & Configuration*, on page 92, for more information.

The AXIS Print Utility for OS/2 is not needed on the client platforms when using a client-server configuration.

About AXIS Print Utility for OS/2

AXIS Print Utility for OS/2 is an application for NetBIOS/NetBEUI printing in the OS/2 environment. Its allows you to:

- Install and maintain the AXIS 5400+ printer ports as OS/2 printer ports.
- Capture and monitor print jobs directed to the AXIS 5400+ ports.

Print jobs are directed through a spool directory located on your local hard disk (peer-to-peer mode), or on the file server (client-server mode). The printer port status of your AXIS 5400+ can be monitored and pop-up notification messages can be generated, keeping you informed of completed print jobs or any problem condition.

Notes:

The NetBEUI protocol must be active. If not, use MPTS/LAPS (LAN Server) or SETUP (LAN Manager) to activate it.

If you are using OS/2 version 2.x and wish to print through TCP/IP, we recommend that you use the IBM TCP/IP for OS/2 product. It supports the LPD and interactive FTP print methods.

Installing the AXIS 5400+

1. When AXIS Print Utility for OS/2 is running, click **Install** to install your AXIS 5400+. The port appears in the list as <name>.LP1, where <name> is AX followed by the last six digits of your print server serial number. e.g. AX100086.LP1.
2. Select the port that you want to install, then click **Install**.

Repeat this procedure for each server using the AXIS 5400+.

The AXIS Print Utility for OS/2 must be running in order to print through your AXIS 5400+. It is strongly recommended that you modify the startup.cmd file, enabling AXIS Print Utility for OS/2 to automatically start when your client is re-booted. Instructions are available in the AXIS Print Utility for OS/2 Readme file.

Creating a Print Queue (OS/2 version 2.x and OS/2 Warp)

1. Double-click the **Templates** folder, then drag the **Printer** icon out to the Workplace Shell (or into a folder) while holding the right mouse button down.
2. Type a name of your choice in the Name field.
3. Select \PIPE\- 4. Click **OK** to confirm the printer definition.

Sharing the Print Queue

A print queue must be made a shared resource before it can be accessed from other clients or servers. The following three examples show how you can share your printer resources:

Open an OS/2 window and issue the following command:

```
NET SHARE <queue_name> /PRINT
```

Where <queue_name> is the name of the queue created on the previous side.

To share a printer resource when using OS/2 Warp with IBM Peer service, follow the steps below:

1. Click the right mouse button on the printer object.
2. Select **Share** and then **Start sharing**. In the dialog box, enter a Description.
3. Select the check-box **Start sharing at LAN workstation start-up**.
4. Click **OK**.

To share a printer resource when using LAN server 4.0, follow the steps below:

1. Open **LAN Server Administration**.
2. Open your domain and then **Resource Definition**.
3. Drag and drop a printer from the template.

4. Enter the Alias name, select a Server name and the previously created Spooler Queue Name.
5. Click **OK**.

The setup is completed and you can now print through your AXIS 5400+.

Section 7 Setting Up - Macintosh

Having connected the AXIS 5400+ to your network as described in *Basic Installation*, on page 18, this section now describes how to set up your AXIS 5400+ for printing in Macintosh environments using AppleTalk.

If you intend to operate your AXIS 5400+ in a multiprotocol environment, you should also proceed to the other relevant sections in this manual, namely:

Section 5 Setting Up - NetWare, on page 53

Section 4 Setting Up - Windows, on page 32

Section 6 Setting Up - OS/2, on page 66

Section 8 Setting Up - UNIX, on page 78

Installation Using the Chooser Window

Basic Configuration

Basic configuration in AppleTalk is performed simply by opening the Chooser window and selecting a printer.

You can change the default name of your AXIS 5400+ or any of default parameters by editing the *config* file. To access the *config* file from a Macintosh, you can use:

- any Java enabled Web browser
- FTP using MacTCP, Fetch or Anarchie

In order to use any of the methods, you must assign an IP address to the AXIS 5400+ as described in *Setting Parameters*, on page 76.

Choosing a Printer

Selecting a Printer

The method for choosing a printer varies depending on which version of LaserWriter printer driver you are using.

- The LaserWriter 7.0 driver assumes that you use a standard PostScript driver, and cannot take advantage of any printer specific features.
- The LaserWriter 8.0 driver uses PPD files that contain printer descriptions. This gives you full control over any features your printer might have.

Note:

The print server can automatically detect the type of printer you are using if you enable the 'Autodetect Printer Type'-function. The print server can then recognize two types of printers, besides the default LaserWriter printer: EpsonLQ2 and DeskWriter. To enable the 'Autodetect Printer Type'-function, log in to your print server's web interface and choose: Admin | Network Settings | Detailed View | Macintosh | AutoDetectPrinterType | YES. See the print server's web interface Help pages for details.

LaserWriter 7.0 Printer Driver

Follow the instructions below to choose a printer:

1. Select **Chooser** from the **Apple** menu.
2. Click the **LaserWriter** icon.
3. If your network has more than one zone, click on the zone you want. If your network has no zones, this box does not appear.
4. Click the name of the printer you want. The default AXIS 5400+ printer name is shown as: AXIS<nnnnnn>_<port>, where <nnnnnn> is the last six digits of the AXIS 5400+ serial number, and <port> is LPT1. For example: AXIS100086_LPT1.
5. Click the **Close** box. This completes the configuration and closes the Chooser.

Repeat this procedure for each Macintosh computer on the network using the AXIS 5400+.

LaserWriter 8.0 Printer Driver

Follow the instructions below to choose a printer:

1. Select **Chooser** from the **Apple** menu.
2. Click the **LaserWriter 8.0** icon.
3. If your network has more than one zone click on the zone you want. If your network has no zones, this box does not appear.
4. Click the name of the printer you want. The default AXIS 5400+ printer name is shown as: AXIS<nnnnnn>_<port>, where <nnnnnn> is the last six digits of the AXIS 5400+ serial number, and <port> is LPT1. For example: AXIS100086_LPT1.
5. Click **'Setup...'** and then **'Auto Setup'**. If the selected printer supports bi-directional printing and the appropriate PPD file is available, the installation is performed automatically and you can therefore proceed directly to step 7. If this is not the case, the PPD file must be selected manually, as described in step 6.
6. Choose the PPD file matching your printer, and click **'OK'**. If your printer does not appear in the PPD file list, please contact your printer vendor. Use the Generic PPD if you do not need any printer specific features.
7. Click **'OK'**, and then click the **Close** box. This completes the configuration and closes the Chooser.

Repeat this procedure for each Macintosh computer on the network using the AXIS 5400+.

Bi-directional support

The AXIS 5400+ allows the printer driver to communicate directly with the printer and consequently facilitates complete functional control over print jobs, e.g. automatic downloading of fonts not resident in the printer.

This functionality has backward compatibility with older printers and Macintosh computers, which means that the AXIS 5400+ can generate appropriate responses to Macintosh printer queries, when the connected printer does not support bi-directional communication.

Verifying the Setup

You simply need to print a document from the Macintosh computer to verify communication to the chosen printer. The basic installation can be considered complete if the print test is satisfactory. The AXIS 5400+ is now ready to use as a print server.

Note:

For information on advanced AppleTalk functions such as non-PostScript printer support, please refer to the Axis NPS Print Server Technical Reference on the AXIS Product CD.

ASCII, TBCP and BCP

The Binary Communication Protocol (BCP) and the Tagged Binary Communication Protocol (TBCP) are communication protocols used by the serial and parallel ports of a printer. They allow 8-bit binary data in files concurrent with the use of some control characters, for communication and print job control. TBCP is required for printing with a binary data stream on some printers, e.g HP printers.

Note:

Some printers, e.g. Epson Inkjet printers, can not be used when TBCP is enabled.

Setting Parameters

In AppleTalk, you can change a limited number of the parameters of the AXIS 5400+. You can:

- enable and disable binary data transfers for your printing
- select the type of binary transfer protocol to use
- specify the AppleTalk printer type
- set the IP address

However, by assigning an IP address to your AXIS 5400+, you have access to all of print server's parameters via any standard Web browser or via FTP. Refer to *Section 9 Management & Configuration*, on page 92 for more information.

Example: The following example describes the how you set the AXIS 5400+ parameters in AppleTalk.

Important: DO NOT use the parameter values from this example when configuring your AXIS 5400+. You should select values that are appropriate for your printers and network settings.

Follow the instructions below:

1. Open the Chooser.
2. Select a network printer driver, any LaserWriter will do.
3. Select the printer port which name ends with "_CFG".
4. Close the Chooser.
5. Open a text editor, e.g. SimpleText.

6. Write a text file containing the parameters you want to set:

BINARY_TYPE_1.	:BCP
INT_ADDR.	:192.168.3.191
ATYPE_1.	:EPSONLQ2

Parameters that you do not want to set should be excluded from the text file.

Refer to *13 - The Parameter List*, on page 143, for information about which values that are valid for each parameter.

7. Print the text file. The settings will be stored in the print server.
8. Open the Chooser and select the printer port you wish to use for printing documents.
9. Close the Chooser.

Note:

The _CFG port disappears 60 minutes after the AXIS 5400+ has been powered on. If you want it to reappear, you must restart your AXIS 5400+.

Section 8 Setting Up - UNIX

Installation in the UNIX Environment

Having performed the basic TCP/IP setup procedures as defined in *Assigning an IP address*, on page 22 and onwards, you are now able to print in interactive mode using LPR, FTP or Reverse Telnet protocols.

However, should you require to integrate the AXIS 5400+ into your host spooler, you can use the Axis automatic installation script *axinstall*. This utility software is resident on the AXIS 5400+ and can be downloaded to your host using FTP, so no disks are required. The *axinstall* script can also be downloaded from the Axis web: <http://www.axis.com/> and it is available on the AXIS Product CD.

Having completed this operation, the printer connected to the AXIS 5400+ will appear as though they are directly connected to the host printer spooler.

If you intend to operate your AXIS 5400+ in a multiprotocol environment, you should also proceed according to one or more of the following sections, as appropriate to your network.

Section 5 Setting Up - NetWare, on page 53

Section 4 Setting Up - Windows, on page 32

Section 6 Setting Up - OS/2, on page 66

Section 7 Setting Up - Macintosh, on page 72

Integration into the Host Printer Spooler

To integrate the AXIS 5400+ into the host printer spooler, you can use the auto installation script *axinstall*, resident in the AXIS 5400+. Follow the instructions below to install *axinstall* onto your host using FTP:

1. Login to the AXIS 5400+ using the command:
ftp <host name> or ftp <IP address>
2. Enter root as the user id and pass as the password.
3. Download the script using the command:
get axinstall

Log out using the command quit, bye or exit depending on your FTP version.

```
> ftp npserver
connected to npserver.
220 AXIS 5400+ FTP Print Server v6.20 Jan 01 2001
ready.
Name (npserver:thomas): root
331 User name ok, need password
Password: pass (not visible)
230 User logged in
ftp> get axinstall
200 PORT command successful.
150 Opening data connection for axinstall
(192,36,253,4,13,223), (mode ascii).
226 Transfer complete.
local: axinstall remote: axinstall
61187 bytes received in 14 seconds (4.2 kbytes/s)
ftp> bye
221 Goodbye.
>
```

Typical FTP session for collecting the axinstall script

The *axinstall* script has now been downloaded to your host. Execute the script with this command:

```
sh axinstall
```

You will be guided through the installation by a step-by-step procedure. During the installation you will be asked to select a print method; we suggest you choose LPD or, for more functionality, use the PROS filter or named pipe methods. Please refer to the following pages if you need guidance on the choice of print methods.

The *axinstall* script will suggest one of the systems listed below when started. If you do not find the suggestion appropriate, then manually select any of the systems listed.

```
1...SunOS 4 (SUN BSD, Solaris 1.x)
2...SunOS 5 (SUN SYS V, Solaris 2.x)
3...AIX (IBM RS/6000, BULL DPX 20)
4...HP-UX (HP 9000)
5...BOS (BULL DPX 2)
6...DEC OSF/1 (Digital Equipment, Alpha)
7...ULTRIX (Digital Equipment, DEC)
8...IRIX (Silicon Graphics, SGI)
9...SCO UNIX (Santa Cruz Operation)
10...SCO UnixWare 2.x
11...SCO UnixWare 7
12...SCO OpenServer
13...FreeBSD (Berkeley UNIX)
14...Linux

15...Generic BSD (Berkeley UNIX)
16...Generic SYS V R3 (UNIX System V Release 3)
17...Generic SYS V R4 (UNIX System V Release 4)
```

Systems supported by axinstall

Print Methods on TCP/IP Networks

The AXIS 5400+ supports several different print methods in the TCP/IP environment. *axinstall* will suggest a print method suitable for your particular UNIX system, but you might want to use another method depending on your printing requirements (banner pages, status logging, etc).

The diagram below shows the alternative data paths taken by some of the UNIX print methods. This illustrates some of the advantages and limitations of the different methods. Use the following information to determine which method to adopt.

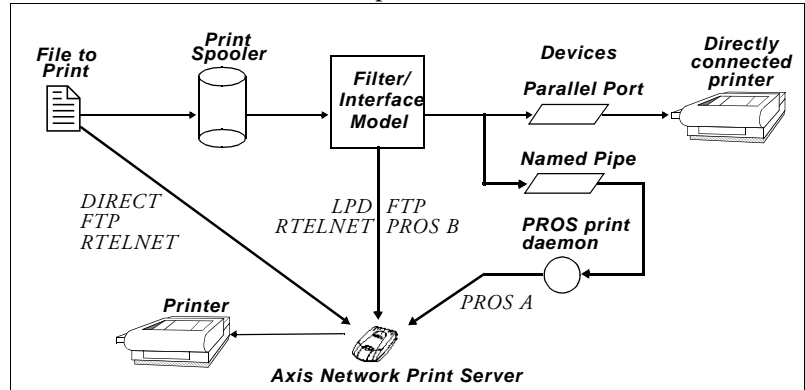


Illustration of different UNIX print methods

LPD

The Line Printer Daemon is a protocol for transferring print jobs between hosts. This is the recommended method for UNIX systems, but some System V versions do not support LPD.

Advantages:

Easy to set up – install the AXIS 5400+ as a remote queue in System V, or add a remote printer to `/etc/printcap` using the `rm` and `rp` fields (BSD).

Limitations:

Spooler features, and `printcap` or `lpr` options (BSD) such as multiple copies, are not available. LPD is not supported on all systems.

FTP The File Transfer Protocol is used for transferring files between hosts.

Advantages:

Uses industry standard network software on the host.

Limitations:

No printer status logging. In the case of BSD it may conflict with other input or output filters and does not allow both input and output filters. In System V no filters or interface programs can be used.

PROS A protocol developed at Axis. Comes in two versions; *named pipe* (PROS A) and *filter* (PROS B).

PROS A **PROS A - Advantages:**

The AXIS 5400+ appears as a device to the system. This makes all filter and model options available. It provides accounting and status logging. Supports bi-directional printing. The printer information read back can be viewed in a log file.

PROS A - Limitations:

A 'C' compiler is required to build the PROS A drivers.

Note:

You can download a 'C' compiler from http://www.gnu.org/ .
--

PROS B PROS B - Advantages:

It provides accounting and status logging. Supports bi-directional printing. The printer information read back can be viewed in a log file.

PROS B - Limitations:

A 'C' compiler is required to build the PROS B drivers and in the case of BSD, it may conflict with other input or output filters. It does not allow both input and output filters. Interface programs can not be used in System V.

Note:

You can download a 'C' compiler from <http://www.gnu.org/>.

Reverse Telnet

Often used for printing via a terminal server printer port. Only recommended if you already have a Reverse Telnet driver installed.

Advantages:

Easy to set up with previously installed Reverse Telnet drivers.

Limitations:

No status logging. Drivers are not supplied with the AXIS 5400+. Existing drivers may be slow.

Other UNIX Systems

Most UNIX systems resemble either BSD or System V and so with some ingenuity, a solution can also be devised for other variants.

If the system has BSD socket type networking support, then `prosbds` (in the `bsd` directory of the AXIS 5400+) can be used as a starting point. It receives print data from `stdin`, and writes a log file to `stderr`. Nothing is written to `stdout`.

Alternatively, FTP may be used. It is a good idea to use `bsd/ftp_bsd` or `sysv/ftp_sysv` as a starting point.

IBM MVS Systems

A sample JCL script, `jcllex`, is available in the `mvs` directory of the AXIS 5400+. It gives an example of how to print a file from an MVS mainframe to an AXIS 5400+ using FTP.

Using Logical Printers to Customize your Printing

The AXIS 5400+ has a powerful facility for altering the print data. This means that your desired print format can be realized on any type of printer. The following actions can be invoked from the AXIS 5400+:

- The character set can be changed to suit the printer
- Strings can be added before and after the print data
- Strings within the print data can be substituted
- ASCII to PostScript conversion
- Hex Dump mode to assist with printing problems

If any of these actions are required, a Logical Printer is used to change the print data before being sent to the printer port. There are eight logical printers (PR1-PR8) that can be set up to filter the print data.

The default logical printers settings are such that PR1-PR4 cause no change to the flow of print data, while PR5-PR8 add CR to LF control characters:

Logical Printer	Changes to data
<i>PR1</i>	<i>no change</i>
<i>PR2</i>	<i>no change</i>
<i>PR3</i>	<i>no change</i>
<i>PR4</i>	<i>no change</i>
<i>PR5</i>	<i>add CR to LF</i>
<i>PR6</i>	<i>add CR to LF</i>
<i>PR7</i>	<i>add CR to LF</i>
<i>PR8</i>	<i>add CR to LF</i>

Each logical printer can be set via the print servers' internal web pages: Open a Web browser, enter the IP address of the print server in the "URL/Adress"-field and choose **Admin | Logical Printer Settings**.

The logical printers can also be set up by editing the *config* file.

Note:

The examples in this section describe how you can configure the available logical printers using a standard Web browser. If you want to set them directly by editing the *config* file, just enter the values for the corresponding parameters.

The examples should only be viewed as suggestions how to configure the logical printers. You should, off course, configure them according to the needs of your network.

In *13 - The Parameter List*, on page 143, you can find a complete list of the AXIS 5400+ parameters.

Refer to *Section 9 Management & Configuration*, on page 92, for more information about the available management tools.

Character Set Conversion

A common problem in a multiple host environment is that different hosts use different ASCII character sets. As a result of this, language specific characters (such as å ü ô ñ) are sometimes printed incorrectly.

The AXIS 5400+ solution to this problem is to assign a character set conversion filter to a logical printer, and then link that logical printer to the host causing the problem.

You select your desired conversion filter by setting the **Character Set Conversion** (PRx_CSET) parameter. The output from the conversion filter is always IBM PC Set 2 (Code Page 437), and this is the character set the printer must be set up for.

Example: Your network contains a host using the character set ISO 8859-2. In order to direct its print jobs to the printer connected to the AXIS 5400+, you should assign the host to a separate logical printer, and install a character set conversion filter.

Follow the instructions below to change the conversion filter:

1. From the print server's internal web page, select **Admin | Logical Printer Settings**.
2. Choose the **PR1** tab.
3. Set the parameter **Character Set Conversion** to **ISO>IBM**.

4. Click **OK** when finished.

The ISO 8859-2 printer data that is sent to logical printer PR1 converts to IBM PC Set 2.

Adding Strings Before and After Print Jobs

These string functions provide a way to send printer control commands before and after each print job. They may be specified individually for each logical printer.

All strings are entered as hexadecimal byte values.

Example: Assume that the logical printer PR5 is configured as a PostScript printer and that you want to append the PostScript End of File character (hex 04) after each print job.

Follow the instructions below to add a string after the print job:

1. From the print server's internal web page, select **Admin | Logical Printer Settings**.
2. Select the **Printer5** tab.
3. Enter the string **04** in the **String After Print Job** text field.
4. Click the **OK** button when finished.

Example: You have an HP LaserJet printer with dual input bins, and want to print on pre-printed forms when using the logical printer PR4. The standard forms are taken from bin 1, and the pre-printed forms are taken from bin 2. The string before print job should contain the command to select bin 2, E_c14H (hex 1B 26 6C 34 48), and the string after print job should contain the command to select bin 1, E_c11H (hex 1B 26 6C 31 48).

Follow the instructions below to add strings before and after the print job:

1. From the print server's internal web page, select **Admin | Logical Printer Settings**.
2. Select the **Printer4** tab.

3. Enter the string **1B 26 6C 34 48** in the **String Before Print Job** text field.
4. Enter the string **1B 26 6C 31 48** in the **String After Print Job** text field.
5. Click the **OK** button when finished.

String Substitutions

The string substitution function performs search and replace operations on the print data. The primary application is to replace printer control commands. Up to twenty string substitutions may be specified individually for each logical printer.

All strings must be entered as hexadecimal byte values, and each match and substitute string must be preceded by a count byte.

You substitute command strings by editing the String Substitutions (PRx_STR) parameter.

Example: Assume that you want to replace the UNIX New Line (hex 0A) with an ASCII NewLine (hex 0D 0A) for logical printer PR1.

Follow the instructions below to substitute command strings:

1. From the print server's internal web page, select **Admin | Logical Printer Settings**.
2. Select the **PR1** tab.
3. Enter the string **01 0A 02 0D 0A** in the **String Substitutions** text field.

Hex Code	Explanation
<i>01</i>	<i>length of the string you want to replace</i>
<i>0A</i>	<i>the string you want to replace</i>
<i>02</i>	<i>length of the substitute string</i>
<i>0D 0A</i>	<i>the substitute string</i>

4. Click the **OK** button when finished.

This is the default setting for logical printers PR5 through PR8.

Example: Assume that you want to replace the UNIX New Line (hex 0A) with an ASCII NewLine (hex 0D 0A), and the printer command ^cG1 (hex 1B 47 31) with ^cY (hex 1B 59) for logical printer PR2.

Follow the instructions below to substitute command strings:

1. From the print server's internal web page, select **Admin | Logical Printer Settings**.
2. Select the **Printer2** tab.
3. Enter the string **01 0A 02 0D 0A 03 1B 47 31 02 1B 59** in the **String Substitutions** text field.

Hex code	Explanation
01	<i>length of the UNIX New Line command</i>
0A	<i>the UNIX New Line command</i>
02	<i>length of the ASCII New Line command</i>
0D 0A	<i>the ASCII New Line command</i>
03	<i>length of the replaced printer command</i>
1B 47 31	<i>the replaced printer command</i>
02	<i>length of the new printer command</i>
1B 59	<i>the new printer command</i>

4. Click the **OK** button when finished.

Note:

Extensive use of string substitutions will naturally decrease the throughput rate of the AXIS 5400+.

ASCII to Postscript Conversion

The AXIS 5400+ logical printers can translate ASCII print data into PostScript format. This makes it possible to print with a PostScript printer from a host that does not support PostScript. The conversion is selected by activating a filter that converts ASCII data into Postscript. This filter can be activated individually for each logical printer.

Activate your desired filter by setting the Printing Language Translation (PRx_FILT) parameter.

Example: Follow the instructions below to convert ASCII print data to PostScript for logical printer PR2:

1. From the print server's internal web page, select **Admin | Logical Printer Settings**.
2. Select the **Printer2** tab.
3. Set the **Printer Language Translation** parameter to **POSTSCR**.
4. Click the **OK** button when finished.

If you select the parameter value **AUTO_PS**, the print data for every print job is searched and if any ASCII data is found, it is translated into PostScript. This setting is recommended if you are not sure if the print data is ASCII or PostScript.

PostScript Settings

When a logical printer is set for PostScript conversion, you must specify the following:

- page size
- page orientation
- page formats
- which font is to be used

The default page size is A4 and the default page orientation is Portrait, while the page format parameters are:

Page Format Parameter	Default Value	
<i>Lines per page</i>	66	
<i>Characters per line</i>	0	<i>0=disable line wrap</i>
<i>Characters per inch</i>	10.0	
<i>Lines per inch</i>	60	<i>60 = 60 lines per inch</i>
<i>Left margin</i>	30	<i>30 = 3.0 mm</i>
<i>Top margin</i>	50	<i>50 = 5.0 mm</i>

The PostScript font can be any font that is installed in the printer; if no font is specified, Courier will be used.

Example: Follow the instructions below to set the PostScript parameters for logical printer PR2:

1. From the print server's internal web page, select **Admin | Logical Printer Settings**.
2. Select the **Printer2** tab.
3. Set the **Printer Language Translation** parameter to **POSTSCR**.
4. Set the **PostScript Page Size** parameter to **LETTER**.
5. Set the **PostScript Page Orientation** parameter to **LANDS**.
6. Enter the string **48 0 120 60 30 50** in the **PostScript Page Format** text field.

Hex code	Explanation
48	48 lines per page
0	disable line wrap
120	12 characters per inch
60	6 lines per inch
30	3 mm left margin
50	5 mm top margin

7. Enter the string **Helvetica** in the **PostScript Font** text field.

8. Click the **OK** button when finished.

Read-back of information

The AXIS 5400+ supports bi-directional printing. The information from the printer is read back on the parallel port when the parameter Read Back Port (PR_x_IN) has the default setting of AUTO. However, it is required that the printer also supports bi-directional printing.

Please refer to your printer documentation for further details regarding bi-directional printing support.

Example: Follow the instructions below to disable the bi-directional communication for logical printer PR1:

1. Select the **PR1 Web** page.
2. Set the **Read Back Port** parameter to **NONE**.
3. Click the **OK** button when finished.

Debugging using the Hex Dump Mode

When hex dump mode is activated, the print data is printed as hexadecimal byte values rather than characters; printer control commands are also printed as hex values. This allows you to inspect what control and print characters are being sent to the printer, which is a useful debugging facility for the more difficult printing problems.

Example: Follow the instructions below to activate the hex dump mode for PR3:

1. Select the **Printer3 Web** page.
2. Set the **Hex Dump Mode Enabled** radio button to **YES**.
3. Click the **OK** button when finished.

Note:

The page length for hex dump printouts is determined by the lines per page value of the PostScript page format parameter.

Section 9 Management & Configuration

The management and configuration tools that are supported by the AXIS 5400+ allows you to:

- Change the print server parameters, i.e. editing the *config* file
- Receive extended information about the print jobs
- Receive printer port status
- Monitor your printers
- Reset the AXIS 5400+
- Upgrade the AXIS 5400+ firmware (Refer to *Section 11 Upgrading the Software*, on page 137)

Configuration Overview

The method you should use to manage and configure your AXIS 5400+ is depending on the operating system protocols of your network. The table below displays which method to use for each supported environment.

Operating System Protocols	Configuration/Management methods
TCP/IP (UNIX, Windows 95/98/NT/2000, Windows 3.1/WfW, NetWare Pure IP, OS/2)	<ul style="list-style-type: none"> • Web Browser - See page 93 • AXIS ThinWizard - See page 98 • FTP - See page 109 • telnet - See page 112 • SNMP - See page 115 • HP Web JetAdmin - See page 117
NetBIOS/NetBEUI (Windows 95/98/NT/2000, Windows 3.1/WfW, OS/2)	<ul style="list-style-type: none"> • AXIS NetPilot - See page 102
IPX/SPX (NetWare)	<ul style="list-style-type: none"> • AXIS NetPilot - See page 102 • HP JetAdmin - See page 117 • Novell Utilities - See page 118
AppleTalk using TCP/IP	<ul style="list-style-type: none"> • Web browser - See page 93

Using a Web browser

Once you have established the AXIS 5400+ in the TCP/IP environment, as described in *Assigning an IP address* on page 22, you are free to access the AXIS 5400+ Web pages from any Java enabled Web browser.

The Web interface of the AXIS 5400+ is divided into two modes of operation, User mode and Admin mode.

- User** In User mode, you have no rights to change any parameter settings. However, if you have access rights to the Admin mode, you can change some of the basic parameters from User mode via the Configuration Wizard. This mode is intended for regular users who are only interested in using the print server's interface for checking print jobs or viewing printer properties. If you want to change any other of the print server's settings, you must enter the Admin mode.

- Admin** When in Admin mode, you have access to all the print server's parameters and you can change them to your liking. This mode is intended for network administrators and is password protected to prevent unauthorized changing of the print server parameters.

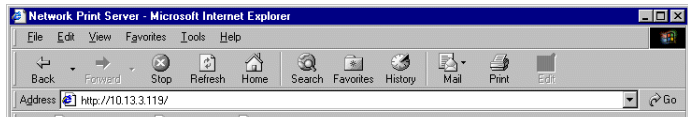
Note:

If the ROOT_PWD parameter is set to *pass*, which is the default value, you have access to the User mode as well as the Admin mode.

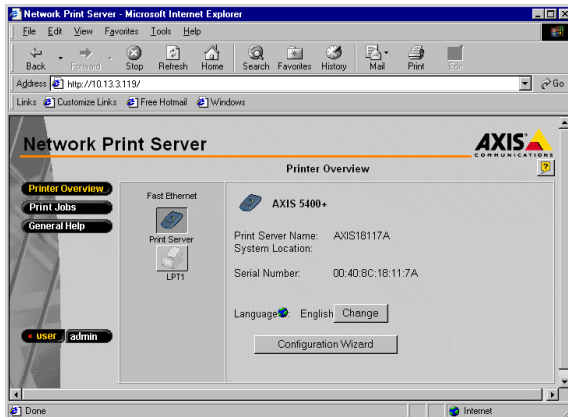
Accessing the Web Pages

Follow the steps below to access the internal home page of the AXIS 5400+. The browser used in the following example is Internet Explorer 5.00.

1. Start your Web browser.
2. In the **Location**-field, type the host name or the IP address of your AXIS 5400+:

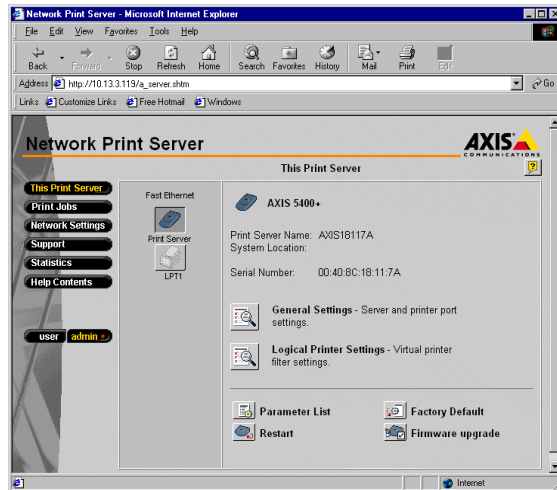


3. The User Mode home page of your AXIS 5400+ appears in the browser window.



The AXIS 5400+ User Home Page

Click the Admin button to enter the Admin mode. If the management password is set to anything but `pass`, you must enter `root` as the user and the password. The password `pass` is the default password of the AXIS 5400+.



The AXIS 5400+ Administrator Home Page

Available Services from the User Mode

Printer Overview

The following services are available from the User mode. An additional link to the Axis home page is available from this mode.

The Printer Overview page contains a section that allows you to view the general parameter setting of the AXIS 5400+, including the print server name and the location of the print server in your organization, if defined.

If you have admin access rights you can use the Configuration Wizard to perform basic configuration of the AXIS 5400+.

By clicking on the printer icon, a printer page opens, allowing you to view the status and the supported capabilities of the connected printer. The extent of this information is depending on the printer model. From the printer page, you can also print a test page to the printer.

Print Jobs

From the Print Jobs page you can view the status of the current print jobs, including the number of printed bytes and the origin of the print job. You can also view a log of the 20 latest print jobs that includes the user, the printing protocol and the file size. A log that displays the accumulated usage of the connected printer allows you to control the usage of the connected printers.

General Help

The General Help page presents you with basic information about the AXIS 5400+ and the Web user interface. A short description of the Axis installation tools you should use when installing a printer on your PC, is also included.

Configuration Wizard

The Configuration Wizard will guide you through the procedure of verifying some default settings and configure a few parameters. When you are finished, the print server is correctly configured for all printers and network environments.

Language Settings

You can change the language of the print server's web interface from the User mode. Available language options are English (default), French, German and Spanish.

Available Services from the Admin Mode

The following services are available from the Admin mode. An additional link to the Axis home page is available from this mode

This Print Server

The **This Print Server** page contains a section that allows you to view and modify the general parameter setting of the AXIS 5400+, including the print server name, the node address, the password and the base URL. You can also configure any of the eight available logical printers of the AXIS 5400+. Management operations, like restarting the AXIS 5400+ and resetting its parameters to the factory default settings, are also available.

By clicking on the printer icon, a printer page opens, allowing you to view the status and the supported capabilities of the connected printer. The extent of this information is depending on the printer model. From the printer page, you can also print a test page to the printer.

Print Jobs

From the Print Jobs page you can view the status of the current print jobs, including the number of printed bytes and the origin of the print job. You can also view a log of the 20 latest print jobs that includes the user, the printing protocol and the file size. A log that displays the accumulated usage of the connected printer allows you to control the usage of the connected printers. If you want to delete an ongoing print job, a delete button is available on this page.

Network Settings

From the Network Settings page you can set all parameters that control the network traffic to and from the AXIS 5400+. You can enable or disable any of the supported network protocols and fine-tune the parameter settings.

Caution

All network configuration should involve the Network Administrator.

Support

From the Support page you can receive help to resolve any installation or print problems that might occur. If your problems persist, the Support page allows you to produce a Server Report. The Server Report includes the settings of the AXIS 5400+, information about your connected printers as well as the current network settings. The Server Report is of great value for support assistance, so please mail, email or fax it to your support channel together with a detailed problem description.

Statistics

The Statistics page displays information about the network traffic to and from the AXIS 5400+ as well as information about servers and services that are connected or associated with the AXIS 5400+.

Help Contents

The Help Contents displays a comprehensive description of the configuration and management activities that can be performed from the internal Web pages of the AXIS 5400+. These activities include instructions on how to install the AXIS 5400+ in various environments and how to upgrade it with new firmware. A detailed index is also available.

Parameter List Button Shows all the current parameter settings of the print server.

Restart Button Restarts the print server.

Factory Default Button Resets all the print server's parameter settings to the default values.

Firmware Upgrade Button Upgrades the print server's internal software.

Using AXIS ThinWizard

AXIS ThinWizard is a management tool that allows you to manage and upgrade ThinServer products. You can find, monitor and upgrade your Axis print servers remotely in any TCP/IP network using a standard Web browser.

The internal Web pages of Axis ThinServer products integrate directly into AXIS ThinWizard, giving you access to the services described in *Using a Web browser* on page 93.

Once you have established the AXIS 5400+ in the TCP/IP environment, as described in *Assigning an IP address* on page 22, you are free to access the AXIS 5400+ from AXIS ThinWizard.

Installing AXIS ThinWizard

You should only install AXIS ThinWizard on a designated server on your network. When you want to use the AXIS ThinWizard for management purposes, you just access the server via any standard Web browser.

The AXIS ThinWizard software is available on the AXIS Product CD and can also be downloaded from the Axis web: www.axis.com

Note:

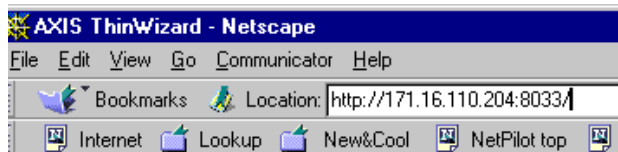
You cannot install the AXIS ThinWizard server software on a Windows 3.1 or a Windows for Workgroups server. However, you can access AXIS ThinWizard's Web interface from any TCP/IP client in your network.

**Starting AXIS
ThinWizard**

Follow the instructions below to start the AXIS ThinWizard:

1. Make sure that the computer where you installed the AXIS ThinWizard is up and running on your network.
2. Start a Web browser from a client in your network.

Enter the IP address or the host name of the server where you installed AXIS ThinWizard. If the server is installed on another port than 80, you must enter the port name after the host name or the IP address.



Accessing AXIS ThinWizard from Netscape 4.0

3. The AXIS ThinWizard start page appears in the Web browser. Enter your user name and the password and click the **Log in** button.
4. The AXIS ThinWizard interface appears. Select a network group from the list. If the list is empty, you must first create a group.

Creating a Network Group

The network group concept is the corner stone of AXIS ThinWizard. By dividing your network into network groups, you can monitor your print servers more efficiently. The scope of each network group is determined by the Axis server types and IP address ranges that are included. You can create as many network groups as you want.

Follow the instructions below to create a network group:

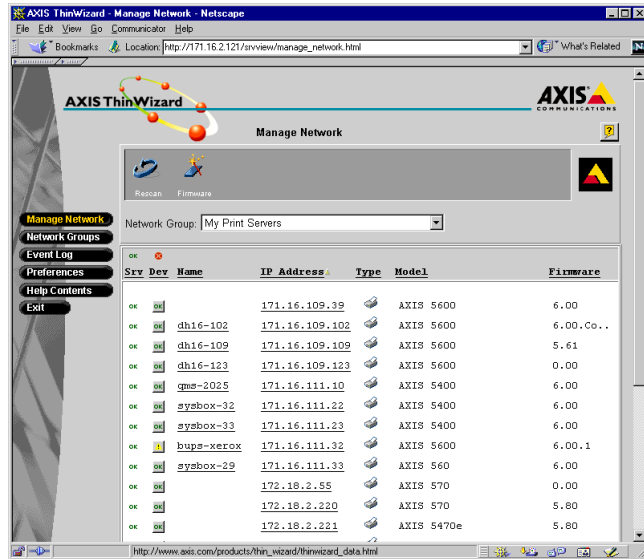
1. Click the **Network Groups** button in the AXIS ThinWizard main menu.
2. Click the **Create** button.
3. The Create Network Group page opens. Type the name of the network group, enter the IP address ranges and Axis server types that should be included. If you are only interested in managing print servers, deselect all options but the **Print Servers** option.
4. Click **OK** to create the network group.

You can edit the properties of each network group from the Network Groups page. Simply select the network group from the list and use one of the **Edit**, **Copy** or **Remove** commands.

Managing the print servers

Follow the instructions below to access the AXIS 5400+ using AXIS ThinWizard:

1. Click the **Manage Network** button in the main menu.
2. Select the network group, including the AXIS 5400+, from the drop-down list. All AXIS servers included in the network group appear in the window.
3. Click the link of the AXIS 5400+ to access its internal Web page.
4. The 'Srv' and 'Dev' columns show the status of your print servers and printers.



You are now free to manage and configure the AXIS 5400+ as described in *Available Services from the User Mode* on page 95.

Upgrading Axis Servers

Refer to *Upgrading using AXIS ThinWizard* on page 138, for more information about upgrading Axis Servers using AXIS ThinWizard.

Additional Information

If you need more information, please refer to the AXIS ThinWizard on-line help.

Using AXIS NetPilot

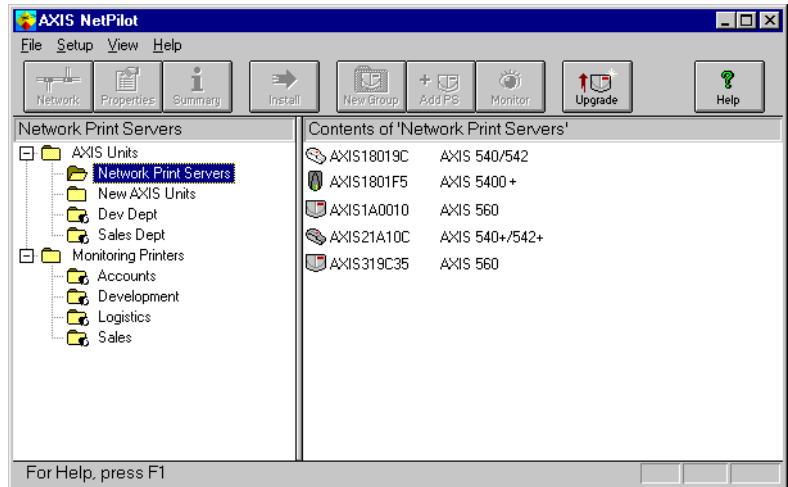
AXIS NetPilot is the recommended tool to use for configuring the AXIS 5400+ in networks that support communication via the IPX/SPX or the NetBIOS/NetBEUI protocols. You will find AXIS NetPilot on the Axis Communications web site: www.axis.com and on the AXIS Product CD.

AXIS NetPilot allows you to:

- Change the AXIS 5400+ parameter values
- Modify network environment settings
- Monitor your printers on the network
- Create logical groups of print servers to simplify administration
- Upgrade the AXIS 5400+

Starting AXIS NetPilot

Start AXIS NetPilot by clicking the AXIS NetPilot icon, which resides in the folder where you installed AXIS NetPilot.



The main window of AXIS NetPilot

Changing the parameter values

AXIS NetPilot provides you with two useful tools for changing parameter values:

- **Property pages:** Use the Property pages if you have little experience in editing *config* files and need a user-friendly interface.
- **Parameter List Editor:** Use this fast and efficient tool if you have considerable experience in editing *config* files.

The Property Pages

The Property pages provide an easy way to view and change the parameters. Each property page comprises a set of selection tabs that are appropriate to your operating environments. Each parameter can be edited by selecting the relevant box.

Follow the instructions below to open and edit an arbitrary Property Page:

1. Select the AXIS 5400+ from the 'Network Print Servers' folder.
2. Click the **Properties** button on the AXIS NetPilot toolbar or choose **Properties** from the **Setup** menu.

3. Select the tab that includes the parameter you want to change.
4. Change the value.
5. Click **Apply** to save the change to the print server. (If you select **OK** instead, the Property pages closes automatically after the change has been saved).

The Parameter List Editor

The Parameter List Editor is a simple editor that enables you to:

- Edit the AXIS 5400+ *config* file.
- Save customized *config* files to your hard disk.
- configure several network print servers simultaneously.

Follow the instructions below to use the Parameter List Editor:

1. Choose **Edit Parameter List** from the **Setup** menu.
2. Download a *config* file from a print server or from your hard disk by selecting **from File** or **from Print Server**.
3. Click the **Load** button and the *config* file opens in the editor.
4. Edit the *config* file.
5. Select the appropriate radio button, **To File** or **To Print Server**.
6. Click **Save** after you have made your choice, to save the modified *config* file.

Important:

When saving the *config* file to multiple print servers, make sure that you do not assign the same IP address to different print servers.

Modifying the network environments

From the Network Environment window you can modify the network settings for each supported network environment.

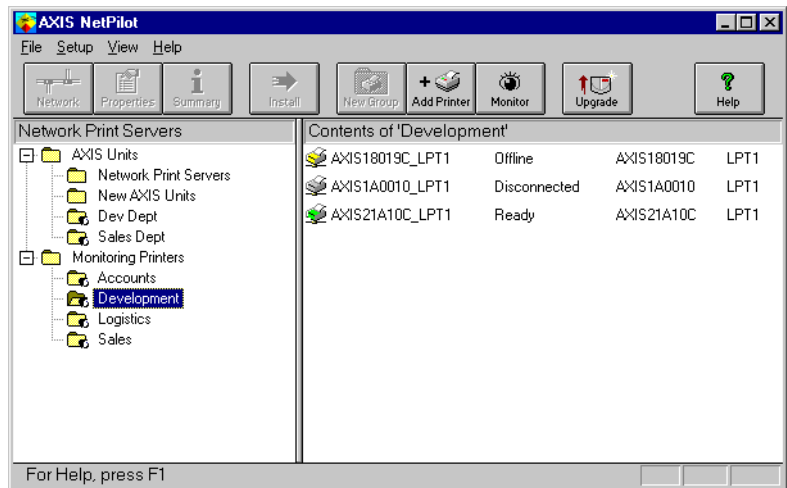
To gain access to the Network Environment window, follow the instructions below:

1. Select the AXIS 5400+ from the 'Network Print Servers' folder.

2. Click on the **Network** button on the toolbar or select **Network** from the **Setup** menu.
3. Select the tab corresponding to the environment that you want to modify.

Monitoring Printers

To simplify printer monitoring, you can create logical groups of printers. The printer status of each printer is displayed in the AXIS NetPilot window.



AXIS NetPilot's Monitoring Window

Creating a printer group

Follow the instructions below to create a printer group:

1. Select the 'Monitoring Printers' folder.
2. Click on the **New Group** button on the toolbar or select **New Printer Group** from the **File** menu.
3. Type a printer group name in the text field and click **OK**.

You can create as many printer groups as you want.

Adding a printer to a printer group

Follow the instructions below to add a printer to a printer group:

1. Select the printer group folder, located in the 'Monitoring Printers' folder.
2. Click on the **Add Printer button** on the toolbar or select **Add Printer** from the **File** menu.
3. The Add Printer window appears. Double-click the print server, to which the desired printer is connected and select the printer port. Click **OK**.

Examining printers

Follow the instructions below to monitor the printers:

1. Select the printer group folder, located in the 'Monitoring Printers' folder. The printer status appear in the right-hand frame of AXIS NetPilot.
2. If you want the status to appear in a new window, click the **Monitoring** button on the AXIS NetPilot toolbar.

Grouping logically connected Print Servers together

AXIS NetPilot allows you to create logical groups of print servers in order to simplify administration. Installed print servers are displayed in the 'Network Print Servers' folder and shortcuts to these print servers can be added to the print server groups. Management operations performed on the shortcuts affects the functionality of the print servers.

Creating a Print Server Group

Follow the instructions below to create a print server group:

1. Select the 'AXIS Units' folder.
2. Click on the **New Group button** on the toolbar or select **New Print Server Group** from the **File** menu.
3. Type a print server group name in the text field and click **OK**.

You can create as many print server groups as you want, but you cannot include a print server in more than one group.

Adding a Print Server to a Print Server Group

Follow the instructions below to add a print server to a print server group:

1. Select the print server group folder, located in the 'AXIS Units' folder.
2. Click on the **Add PS button** on the toolbar or select **Add Print Server** from the **File** menu.
3. The Add Network Print Server window appears. Select the print server and click **OK**.

Examining Print Servers

Follow the instructions below to monitor the print servers:

1. Select the print server group folder, located in the 'AXIS Units' folder.
2. Select the print server.

Printer Information

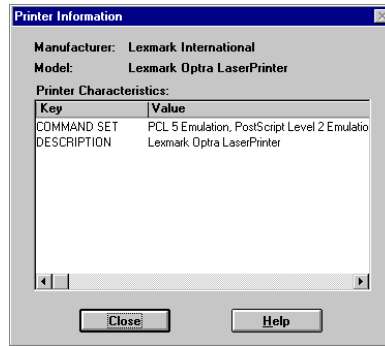
Follow the instructions below to obtain detailed printer information from printers appearing in the monitoring window:

Note:

The extent of the detailed printer information is depending on your printer model.

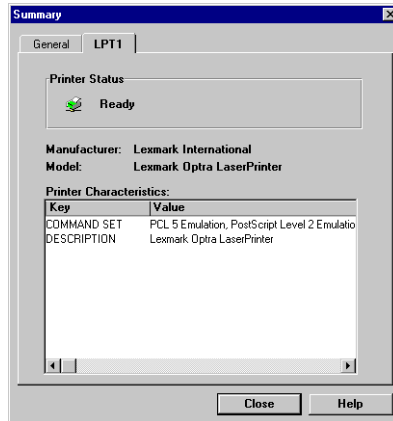
1. Select the desired printer folder, located in the 'Monitoring Printers' folder.

- Click the desired printer icon and choose **Printer Information** from the **File** menu.



AXIS NetPilot Printer Information window

You can also view the detailed printer information in the Summary window.



AXIS NetPilot Summary window

Upgrading the Print Server

You can use the AXIS NetPilot Upgrade Wizard to upgrade the AXIS 5400+ software. Please refer to *Section 11 Upgrading the Software*, on page 137, for details.

Additional information

Refer to the AXIS NetPilot on-line help for further information about this tool.

Using FTP

Having assigned an IP address to your AXIS 5400+, as described in *Assigning an IP address* on page 22, you can change the AXIS 5400+ parameter settings using the File Transport Protocol (FTP).

Editing the *config* file

Follow the instructions below to edit the *config* file using FTP:

1. Log in to the AXIS 5400+ by typing:
`ftp <host name>` or `ftp <IP address>` in a DOS window (Windows and OS/2) or in a UNIX shell window.
2. Enter the user id and the password. (The default entries are `root` and `pass`.)
3. Download the *config* file to your host by typing:
`get config`
4. Edit the file using your preferred text editor.
5. Save the *config* file to the AXIS 5400+ by typing:
`put config CONFIG`

Note:

It is important that the destination file is specified in capital letters. Otherwise the edits are temporary and will be lost once the AXIS 5400+ has been powered down.

To edit the *config* file from a Macintosh you will need FTP support such as MacTCP, Fetch or Anarchie. The procedure for editing the file is the same as described above.

The example on the next page shows how to edit the *config* file using FTP from a DOS window.

Example:

```
> ftp npserver
connected to npserver.
220 AXIS 5400+ FTP Print Server v6.20 Jan 01 2001
ready.
Name (npserver:thomas): root
331 User name ok, need password
Password: pass          (not visible)
230 User logged in
ftp> get config
200 PORT command successful.
150 Opening data connection for config
(192,36,253,4,13,223), (mode ascii).
226 Transfer complete.
8588 bytes received in 0.24 seconds (35.63 kbytes/s)
ftp> put config CONFIG
200 PORT command successful.
150 Opening data connection for CONFIG
(192,36,253,4,13,223), (mode ascii).
226 Transfer complete.
8588 bytes received in 0.45 seconds (19.04 kbytes/s)
ftp> bye
221 Goodbye.
>
```

Viewing
the **Status** File

The status command shows which printer port the logical printers are assigned to, and their current status.

Follow the instructions below to view the *status* file using FTP:

1. Log in to the AXIS 5400+ by typing:
`ftp <host name>` or `ftp <IP address>` in a DOS windows (Windows and OS/2) or in a UNIX shell window.
2. Enter the user id and the password. (The default entries are `root` and `pass`.)
3. Download the *status* file to your host by typing:
`get status`
4. View the status file using your preferred text editor.

Viewing
the **Account** File

The *account* file contains data concerning the 20 last print jobs. It specifies an internal job number, the user that initiated the job, the protocol and logical printer that was used, current status (Completed, Off-line, or Printing), number of bytes printed, elapsed time and off-line time.

Follow the instructions below to view the *account* file using FTP:

1. Log in to the AXIS 5400+ by typing:
`ftp <host name>` or `ftp <IP address>` in a DOS windows (Windows and OS/2) or in a UNIX shell window.
2. Enter the user id and the password. (The default entries are `root` and `pass`.)
3. Download the *account* file to your host by typing:
`get account`
4. View the *account* file using your preferred text editor.

FTP Help

By typing `help` in step 3 in the FTP instruction sets above, a list of all available files and commands will be displayed.

Using Telnet

NetWare

Having assigned an IP address to your AXIS 5400+, as described in *Assigning an IP address* on page 22, you can manage your AXIS 5400+ using the telnet protocol.

Windows

Viewing the **Account** File

The *account* file contains data concerning the last 20 print jobs. It specifies an internal job number, the user that initiated the job, the protocol and logical printer that was used, current status (Completed or Printing), number of bytes printed and elapsed time.

Follow the instructions below to view the *account* file using telnet:

1. Log in to the AXIS 5400+ by typing:
`telnet <host name>` or `telnet <IP address>` in a DOS window (Windows and OS/2) or in a UNIX shell window.
2. Enter the user id and the password. (The default entries are `root` and `pass`.)
3. View the *account* file by typing:
`account`

The example on the next page shows how to view the *account* file using Telnet from a UNIX window.

OS/2

Macintosh

UNIX

Example:

```

> telnet npserver
Trying 192.36.253.96...
Connected to npserver.
Escape character is '^]'.

AXIS 5400+ TELNET Print Server v6.20 Jan 01 2001

AXIS 5400+ network login: root
Password: pass      (not visible)

AXIS 5400+ TELNET Print Server v6.20 Jan 01 2001

Root> account
Current account file:
JOB          USER      PROT          LPR S BYTES  ETIME
1           Thomas    FTP           pr2 C 1885   2
2           Joe       LPT           pr1 C 23074  4
3           RICHARD  PSERVER      pr2 C 43044  5
4           MacUser  APPLE        pr1 C 6717   2
5           LSLM_userNetBIOS pr2 C 36995  3
6           patrick  PROS         pr5 P 83208  9
Root>
    
```

Typical Telnet session to view the **Account** File

Viewing the *Status* file

The status command shows which printer port the logical printers are assigned to, and their current status.

Follow the instructions below to view the *status* file using telnet:

1. Log in to the AXIS 5400+ by typing:
telnet <host name> or telnet <IP address> in a DOS windows (Windows and OS/2) or in a UNIX shell window.
2. Enter the user id and the password. (The default entries are `root` and `pass`.)
3. View the *status* file by typing:
status

Performing resets

Three types of reset commands allow you to perform soft resets, to perform hard resets, and to reset the print server's parameters to its factory default settings.

Follow the instructions below to perform a soft reset using telnet:

1. Log in to the AXIS 5400+ by typing:
telnet <host name> or telnet <IP address> in a DOS windows (Windows and OS/2) or in a UNIX shell window.
2. Enter the user id and the password. (The default entries are `root` and `pass`.)
3. Restart the print server's protocols by typing:
softreset

Replace the command in step 3 above with `hardreset` or `default` to perform the other two reset operations.

Telnet Help

By typing `help` in step 3 in any of the Telnet instruction sets above, a list of all available commands will be displayed.

Using SNMP

You can use SNMP (Simple Network Management Protocol) for remotely monitoring and configuring of the AXIS 5400+. All major functions for print servers are supported.

General Information

SNMP refers to a set of standards for network management, including a protocol, a database structure specification, and a set of data objects. The AXIS 5400+ SNMP implementation runs in TCP/IP and NetWare (IPX) networks.

The management is handled by NMS (Network Management System) software running on a host on your network. The NMS software communicates with network devices by the means of messages, which are references to one or more objects.

A message can be a question or an instruction to a device, or an alarm triggered by a specific event in a device. Objects are contained in data bases called MIBs (Management Information Base), where MIB-II is a standard database.

The AXIS 5400+ supports all relevant parts of MIB-II and of the host resources MIB. The AXIS 5400+ also includes a private enterprise MIB, the AXIS MIB.

The AXIS MIB

In order to make full use of the AXIS 5400+ SNMP support, you are required to use NMS software that allows you to install private enterprise MIBs, like the AXIS MIB.

The AXIS MIB contains a large number of objects which may be categorized as follows:

- Menu objects - used for viewing and changing the AXIS 5400+ configuration from the NMS program. Refer to *13 - The Parameter List*, on page 143.
- Printer status and unit administration objects - used for monitoring AXIS 5400+ print jobs and storing parameter changes permanently.
- Trap objects - used for alarms at various error conditions.

For technical details, you can view the MIB file (*axis.mib*) with any text editor.

The AXIS MIB is resident on the AXIS 5400+ and can be downloaded directly from the print server to your NMS software using FTP.

Follow these steps to add the AXIS MIB to your NMS software:

1. Log in to the AXIS 5400+ using FTP.
2. Download the MIB file */snmp/axis.mib* to the NMS host.
3. Install the AXIS MIB according to instructions in your NMS software documentation.

Using HP Administration Tools

The AXIS 5400+ is fully compatible with the HP JetAdmin and the HP Web JetAdmin printer management software. You can use either tool to install and configure your printer devices, and to monitor the current status of your AXIS 5400+ and the connected printers.

Please refer to the appropriate Hewlett Packard documentation for further details about these tools.

Note:

To enable support for the HP JetAdmin and the HP Web JetAdmin management software, you must set the HP_JETADMIN parameter to YES.

It is not possible to upgrade the AXIS 5400+ Flash Memory from the HP JetAdmin.

If the AXIS 5400+ has been configured with HP JetAdmin or HP Web JetAdmin, you cannot configure it with AXIS NetPilot unless you first reset it to the factory default settings.

Using Novell Utilities

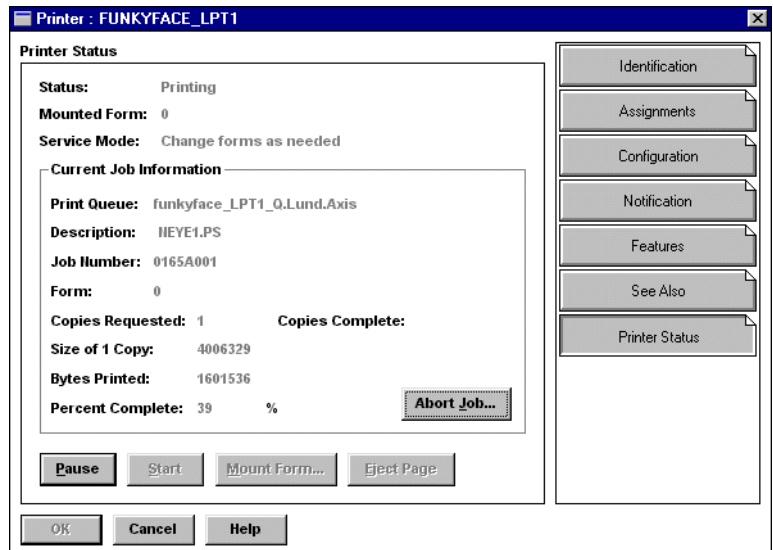
After installing the AXIS 5400+ into the NetWare environment, you can manage your AXIS 5400+, using either Novell's NetWare Administrator, or PCONSOLE.

NetWare Administration

Some useful features provided by the NetWare Administrator are described in more detail below:

Printer Status

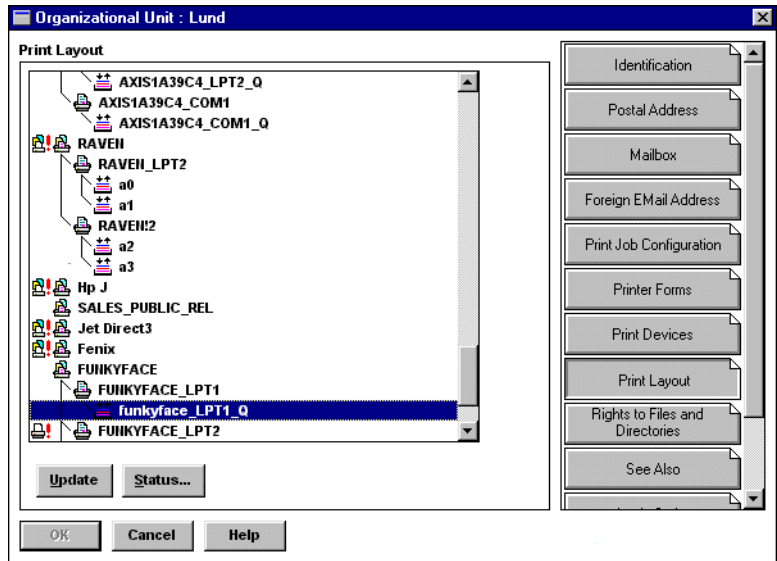
The Printer Status menu, detailed below, shows the status of an active print job serviced by an AXIS 5400+ network print server. It displays detailed information concerning the active job including, Print Queue, print job description, size of print file, percentage of job completed, etc. You can also abort or pause the print job from this menu.



NetWare Administrator Printer Status Menu

Notification You can use the NetWare Administrator to enable or disable status notification messages for printers connected to the AXIS 5400+, e.g. Busy, Off-line, Out of paper, Paper jam, etc. You can also add or remove print job owners and administrators from the list of persons to be notified.

Print Layout You can view installed AXIS 5400+ Network Print Servers and their relative print queues for any NetWare Organizational Unit. You can also display summary information by right-clicking on the printer object you want to examine.



NetWare Print Layout with corresponding information summary

Section 10 Print Server Features

This section describes some special features offered by the AXIS 5400+. Free firmware is available on the AXIS Product CD and on www.axis.com

Auto-IP

Introduced in Firmware Version 6.20

The print server will always receive an IP-address automatically when connecting it to the network by means of Auto-IP. If you have a DHCP server running on your network, the AXIS 5400+ will receive an IP address immediately after you have connected it to the network. In the absence of a DHCP server, your AXIS 5400+ print server will automatically be assigned an IP-address through integrated Auto-IP. The Auto-IP function is enabled by default and does not require any configuration by the user.

E-mail Notification

Introduced in Firmware Version 6.20

Whenever an event that needs human intervention occurs in a network printer, the concerned person can be notified by e-mail. This 'trouble-report' contains a short and concise description of the event. Five events are covered: **Paper Jam, Out of Paper, Toner Low, No Toner, Printer Off-line**. In order to determine who the e-mail recipients will be of these different trouble-reports, follow the instructions in *Setting the e-mail Notification Parameters*, on page 121.

Setting the e-mail Notification Parameters

In order to set the e-mail addresses of the people to whom these trouble-reports will be sent:

1. From your print server's internal web page, go to: **Admin | Network Settings | Detailed View | e-mail Notification**. The following options will appear:
 - PAPER JAM - intended for the person responsible for handling paper jams in the printer.
 - OUT OF PAPER - intended for the person responsible for filling the printer with paper.
 - TONER LOW - intended for the person responsible for filling up the toner in the printer.
 - NO TONER - intended for the person responsible for changing the toner in the printer.
 - PRINTER OFFLINE - intended for the person responsible for the overall maintenance of printer.
2. Enter the respective e-mail addresses of the trouble-report recipients in the blank fields as follows:

Example: name@company.com

3. Click **OK** and exit when done.

Important!

The **SMTP Server** parameter in the print server's internal web pages must be set so that it corresponds to the SMTP server used in your network. This is set in: **admin | Network Settings | Detailed view | TCP/IP | SMTP Server**.

Note:

You will find instructions on how to access your Axis print server's internal web pages in *Management & Configuration*, on page 92.

IPP - Internet Printing Protocol

Introduced in Firmware Version 6.10

The AXIS 5400+ print server enables printing over the Internet with IPP (Internet Printing Protocol), a developing industry standard that allows users to print to remote printers across the Internet.

With IPP, a user with an Internet connection can send a document to any Internet-connected printer. IPP is platform-independent and can be used to print over any LAN or WAN that supports TCP/IP.

In practical terms this means that you can send documents to a remote printer as an addition to or replacement of fax and e-mail, with the same quality and color options of traditional network printing.

In order to print to a remote printer using IPP, you need the following:

- An *IPP client* installed on your computer together with appropriate printer drivers. The IPP client is a tool that adds destination printers to your printer list. A list of available IPP clients can be viewed in *Currently available IPP clients*, on page 124.
- The printer to which you want to send your print job needs to be connected to *a print server with IPP functionality*. AXIS 5400+ makes it possible for your printer to receive printjobs from an IPP client. The IPP-functionality of the AXIS 5400+ print server is automatically activated upon installation.

Note:

IPP requires firmware version 6.10 or higher in your AXIS 5400+ print server. Visit the Axis web site <http://www.axis.com> for firmware upgrades.

IPP Printing Requirements

Before you print to an IPP printer you need to know:

- the **http://** address of the print server. (The http:// address contains the IP address or host name of the print server, the port number (which is 631 and only used in the 1.0 standard) and the printer port name).
- the brand and model of the printer in order to install the appropriate printer driver.
- the printer port name of the print server to which the printer is connected.

Address-schemes for IPP printers

When using IPP printing, you need to know the IP address or host name of your IPP-enabled Axis print server. IPP is a client-server type protocol which comprises two industry standards:

- the 1.0 standard, which uses a http: address scheme.
- the 1.1 standard, which uses an ipp: address scheme.

The URL syntax for the destination printer contains:

1. the print server host name or IP-address
2. the port number 631 (only used in the 1.0 standard).
3. the local printer port name

Example using host name in the 1.0 standard:

If "axisps" is the host name of the AXIS 5400+ print server, "631" is the port number and "LPT1" is the local printer port name, then the syntax of the address scheme will be **http://axisps:631/LPT1** in the 1.0 standard.

IPP address using host name	Corresponding printer
http://axisps:631/LPT1	Printer attached to the LPT1 parallel port

Example using IP-address in the 1.1 standard:

If "171.16.5.218" is the IP-address of the AXIS 5400+ print server and "LPT1" is the local printer port name, then the syntax of the address scheme will be **ipp://171.16.5.218/LPT1** in the 1.1 standard.

IPP address using IP address	Corresponding printer
ipp://171.16.5.218/LPT1	Printer attached to the LPT1 parallel port

Currently available IPP clients

An *IPP client* needs to be installed on your computer together with an appropriate printer driver for proper IPP functionality. The IPP client is a tool that adds destination printers to your printer list.

The AXIS 5400+ print server with integrated IPP is compatible with any 1.0 and 1.1 - compliant IPP client.

The AXIS 5400+ print server presents IPP Printer objects to the client, one for each printer port. Some of the most common IPP client printing methods are described later on in this chapter. Please refer to your client documentation for more specific information.

Currently available IPP clients on the market are:

- **For Windows NT:** the Internet Printer Connection software from Hewlett Packard (can be down-loaded from the Hewlett Packard web site).
- **For Windows 2000:** the Microsoft IPP Client (automatically installed with OS).
- **For Windows '95/'98:** IPP clients can be downloaded from the Microsoft web site.
- **For Unix/Linux:** CUPS (can be down-loaded from the Common Unix Printing System web-site: <http://www.cups.org>).

User Requirements

The IPP protocol does not require any special configuration of the AXIS 5400+ print server, the IPP function is automatically activated when you install your AXIS 5400+.

IPP is platform independent and functional in Windows (NT, 95, 98 and 2000), Macintosh, OS/2, NetWare and UNIX.

Firewall Considerations

If there are one or more firewalls between the IPP Client and the server, you may have to make some changes to the firewall configuration. IPP uses TCP Port 631 for printing, so any firewalls between client and server must be configured to allow bi-directional traffic on that port. Please consult your network administrator if you think any configuration changes are necessary.

How to print

IPP printing in Windows '95/'98:

In this example the printer's http: address is `http://171.16.5.218:631/LPT1`.

Before you print to an IPP printer you will need to know:

- **the http:// address of the print server.** The http:// address contains the **IP address** or **host name** of the print server and the **printer port name**.
- **the brand of the printer** in order to install the appropriate printer driver.
- **the printer port** of the print server to which the printer is connected.

1. Select the IPP printer to which you want to send your document. Choose the destination printer from the **Printer name** field (In **File | Print**).

If your destination printer does not exist in your **Printer name** list, you need to add it. Adding an IPP-printer to your printer list is described in *Adding an IPP printer to your printer list in Windows '95/'98*, on page 125.

2. When you press **Print**, the print job is sent over the Internet to the AXIS 5400+ print server, which then forwards the print job to the destination printer.
3. The recipient of the print job can collect the printjob at the destination printer.

Adding an IPP printer to your printer list in Windows '95/'98

1. Install the IPP client for Windows 95/98 on your computer. This IPP client can be downloaded from the Microsoft web site.
2. Open **Start | Settings | Printers**.
3. Choose **Add Printer**, then **Network Printer**.
4. In the **Printer** field in the **Connect to Printers** window, write the http: address of the destination printer:
`http://171.16.5.218:631/LPT1`.

5. Select the appropriate printer driver corresponding to the destination printer.
6. Specify a name for the printer you wish to add to your printer list. Click **Finish**. The destination printer will be added to your printer list. You are now ready to print using IPP.

IPP printing in Windows NT:

Before you print to an IPP printer you will need to know:

- **the http:// address of the print server.** The http:// address contains the **IP address** or **host name** of the print server and the **printer port name**.
- **the brand of the printer** in order to install the appropriate printer driver.
- **the printer port** of the print server to which the printer is connected.

1. First you need to select the IPP printer to which you want to send your document. Select the destination printer from your **Printer Name** list (In **File | Print | Printer Setup**).

The printer name will begin with a URL: **http://...**

If your destination printer does not exist in your **Printer Name** list, you need to add it. Adding an IPP-printer to your printer list is described in *Adding an IPP printer to your printer list in Windows NT*, on page 126.

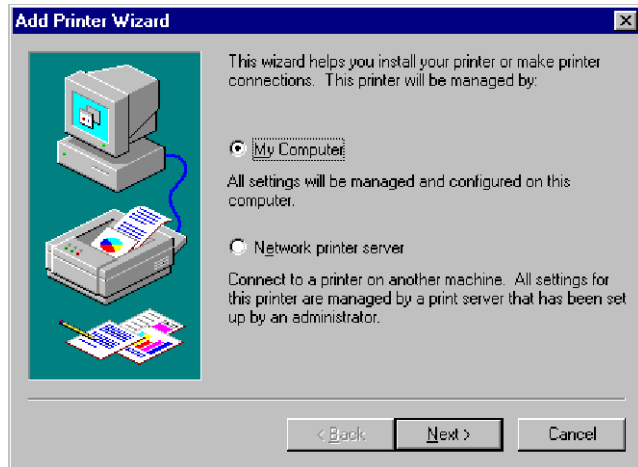
2. When you press **Print**, the print job is sent over the Internet/WAN to the AXIS 5400+ print server, which then forwards the print job to the destination printer.
3. The recipient of the print job can collect the print job at the destination printer.

Adding an IPP printer to your printer list in Windows NT

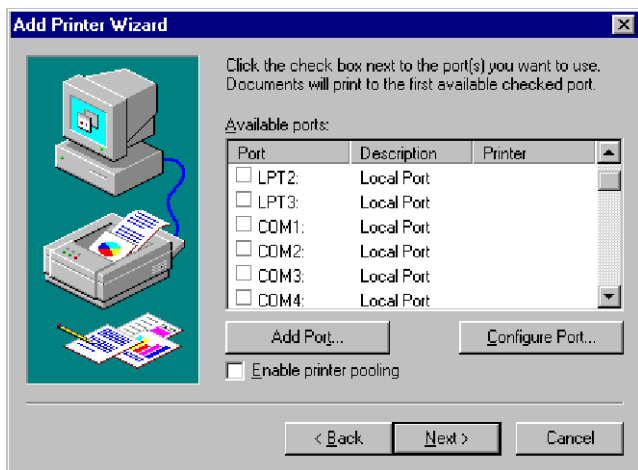
In this example the print servers http: address is http://171.16.5.218, the printer is connected to the AXIS 5400+ print server port LPT1 and the printer is a HP LaserJet 5Si (and the port number is 631).

1. Install the Internet Printer Connection software from Hewlett Packard (can be down-loaded from the Hewlett Packard web site) on your computer.

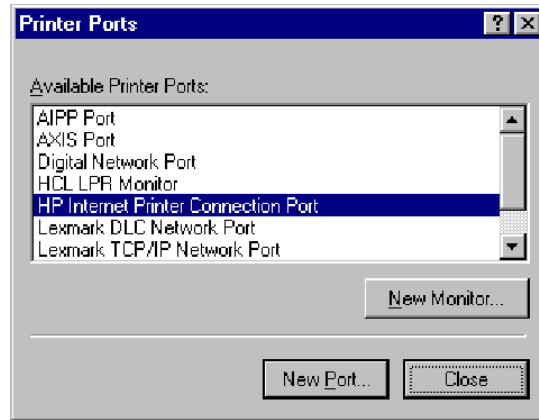
2. Open **Start | Settings | Printers**.
3. Choose **Add Printer**. The Add Printer Wizard will start.
4. Next, the Wizard will ask you if you want to install on **My Computer** or on a **Network print server**. Choose **My Computer** and click **Next**:



5. In the **Available Ports** window, click **Add Port**:



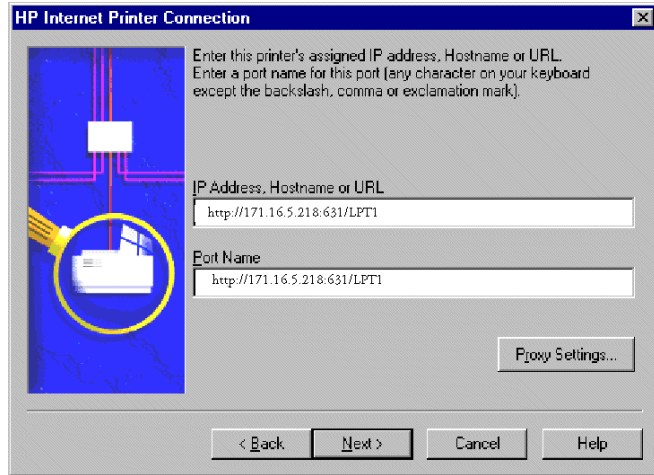
- The **Printer Ports** dialog will appear, showing a list of **Available Printer Ports**.



Choose **The HP Internet Printer Connection Port** and click **New Port**.

- The **HP Internet Printer Connection** will start. Click **Next**.

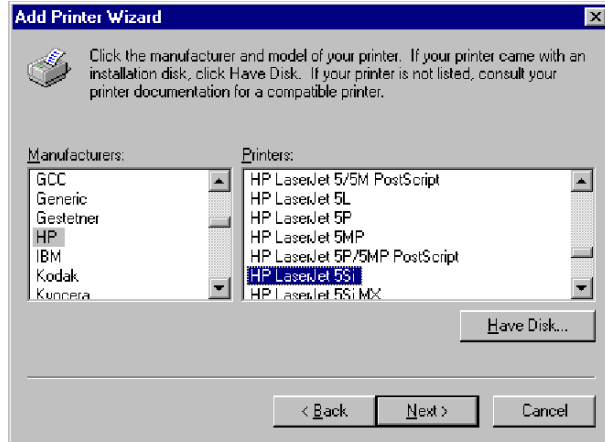
8. In the **IP Address, Host Name or URL** field, type the `http://` address of the Axis print server to which the destination printer is connected. The URL will automatically appear in the **Port Name** field as well:



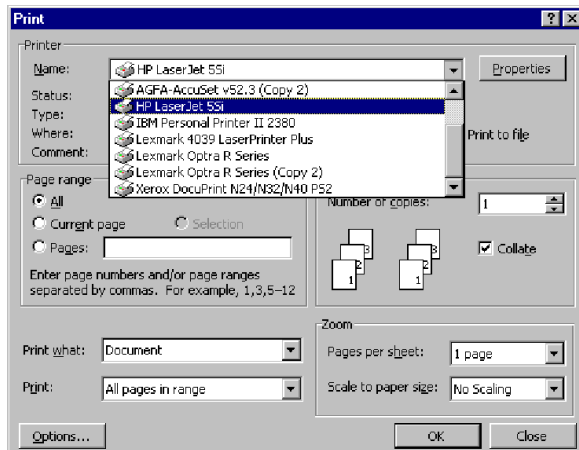
In this example the printer's `http:` address is `http://171.16.5.218:631/LPT1`. Click **Next**.

9. Next, the Wizard will confirm the information you have entered. Click **Finish** to complete the installation and go back to the **Available Ports** list.
10. The IPP printer port list is now available in the **Available Ports** list. Click **Next**.

- Next, choose a suitable driver for the destination printer and install it. Click **Next**.



- You will be asked if you want the newly added printer to be your default printer and if you want to share the printer on your network with other users. Choose the alternatives that suit your printing needs and click **Finish** to complete the installation.
- The new printer will appear in your **Printer** window. You are now ready to start printing using IPP.



IPP printing in Windows 2000

Before you print to an IPP printer you will need to know:

- the **http://** address of the print server. The **http://** address contains the **IP address** or **host name** of the print server and the **printer port name**.
- the **brand of the printer** in order to install the appropriate printer driver.
- the **printer port** of the print server to which the printer is connected.

1. Select the IPP printer to which you want to send your document. Choose the destination printer from the **Select Printer** field (In **File | Print**).

If your destination printer does not exist in your **Select Printer** list, you need to add it. Adding an IPP-printer to your printer list is described in *Adding an IPP printer to your printer list in Windows 2000*, on page 131.

2. When you press **Print**, the print job is sent over the Internet to the AXIS 5400+ print server, which then forwards the print job to the destination printer.
3. The recipient of the print job can collect the printjob at the destination printer.

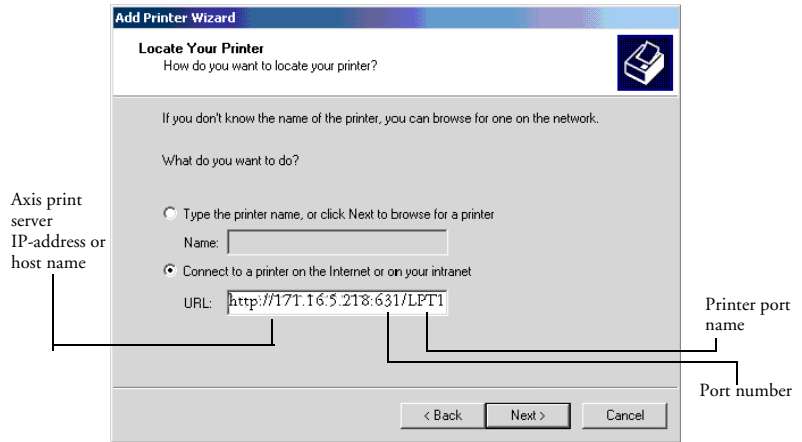
Adding an IPP printer to your printer list in Windows 2000

In this example the print servers **http:** address is **http://171.16.5.218**, the printer is connected to the AXIS 5400+ printer port **LPT1** and the printer is a HP DeskJet 1120C (and the port number is 631).

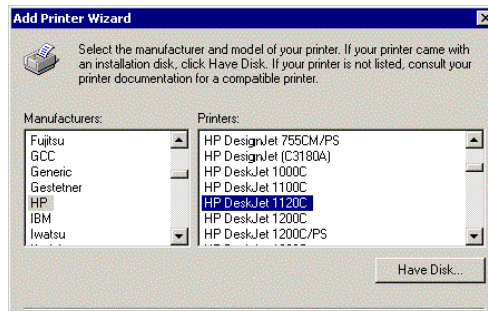
Thus, the printers **http://** address is **http://171.16.5.218:631/LPT1**.

1. Choose **File | Print** from the document you wish to print.
2. In the **Select Printer** field, click the **Add Printer** icon. The **Add Printer Wizard** will start.
3. The Wizard will ask you if you want to install a local printer or a network printer. Choose **Network Printer** and click **Next**.

- Click the 'Connect to a printer on the Internet or on your intranet' radio button and enter the printer `http` : address in the URL field, e.g. `http://171.16.5.218:631/LPT1` and click **Next**:

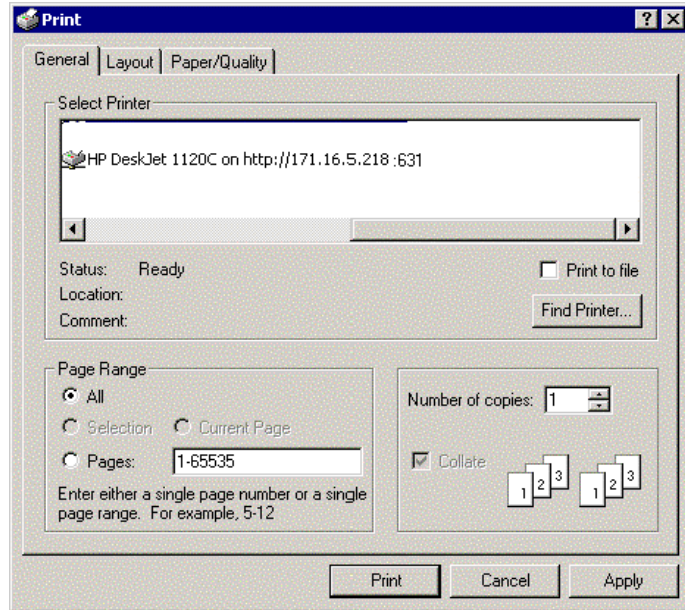


- If you do not have a driver corresponding to the destination printer installed on your computer, the Wizard will prompt you to install one. Click **OK**:
- The Installation Wizard will ask you to select a printer driver corresponding to the destination printer. Select the printer driver from the list and click **OK**:



- The Wizard will ask you if you want the printer to be your default destination printer. Make your choice and click **Next** to complete the Add Printer Wizard installation.

- The new printer is added to your **Select Printer** window:



- You are now ready to print using IPP: specify your new destination printer from the printer list and click **Print**.

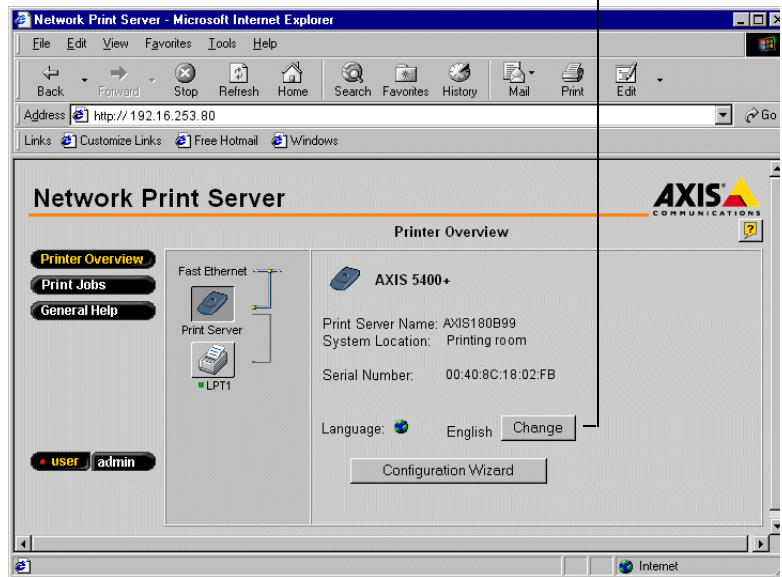
Multi-Language Support

Introduced in Firmware Version 6.20

The print server's web interface and Help pages are now available in Spanish, French and German. The default language is English.

You can change the language of the print server's web interface from the User mode:

1. Click the **Change** button:



2. Choose your preferred language from the drop-down list and press F5 to refresh the view.

AXIS Print System version 1.20 also offers multi-language support for Spanish, French, German and English.

Network Speed

Introduced in Firmware Version 6.20

With the Network Speed parameter you can manually specify the speed at which you will send and receive network packages. You can change the Network Speed setting to correspond to the type of network you are using (10 or 100 mbit).

To change the Network Speed, log in to the print server's internal web page and click **Admin | General Settings | General**. From here you have the option of setting the network speed to:

AUTO_SENSE (default value)	The print server detects which speed is optimal for each network package you transfer.
10_HALF_DX	10 Half Duplex
10_FULL-DX	10 Full Duplex
100_HALF_DX	100 Half Duplex
100_FULL-DX	100 Full Duplex

The default Network Speed value is AUTO_SENSE. This option is the correct option for the majority of users. If you choose a faulty Network Speed option for your network, you may lose contact with the print server. In order to reset the Network Speed parameter to AUTO_SENSE, you will have to perform a factory default on the print server.

Web Flash-Loading

Introduced in Firmware Version 6.20

The firmware can now easily be upgraded, since flashloading over the web is possible. Client software is no longer needed to upgrade the firmware. To upgrade your print server via web flash-loading:

1. Open your web browser, enter the IP address of your print server and press **Enter**. (See *Management & Configuration*, on page 92 for detailed instructions on accessing your Axis print server on the web).
2. From the **admin**-mode, click the '**Firmware Upgrade**' button. From here you can download the latest available firmware to your computer and upgrade your print server with it.

Section II Upgrading the Software

The following software can be upgraded free of charge:

- AXIS IP JumpStarter
- AXIS Print System
- AXIS Print Utility for Windows
- AXIS Print Utility for OS/2
- AXIS NetPilot configuration software
- AXIS ThinWizard
- The AXIS 5400+ firmware held in Flash Memory
- The *axinstall* script
- The AXIS MIB file

Obtaining the Updated Software

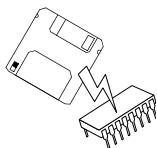
You can obtain all the firmware as well as the latest utility software from the following locations:

- AXIS Product CD
- Over the Internet, by accessing the Axis Communications web: <http://www.axis.com>
- Anonymous ftp, by logging in to <ftp.axis.com> and accessing the folder */pub/axis/*
- your local dealer

Note:

If you are upgrading your print servers using AXIS ThinWizard, you do not need to obtain the firmware file prior to the upgrading process, provided that you are connected to the Internet.

Upgrading the Firmware



You can upgrade the AXIS 5400+ firmware using one of the following methods:

- From the print server's internal web pages
- AXIS ThinWizard (TCP/IP)
- FTP (TCP/IP)
- AXIS NetPilot Upgrade Wizard (IPX/SPX)

Note:

Updating instructions are also supplied with the software update.

Upgrading from the Print Server's Internal Web Pages

Follow these instructions to upgrade the firmware of your print server from its internal web pages (Web Flash-loading):

1. Open your web browser, enter the IP address of your print server and press **Enter**. (See *Management & Configuration*, on page 92 for detailed instructions on accessing your Axis print server on the web).
2. From the **admin**-mode, click the '**Firmware Upgrade**' button. From here you can download the latest available firmware to your computer and upgrade your print server with it.

Upgrading using AXIS ThinWizard

AXIS ThinWizard is a tool that enables batch upgrading of several print servers and should be used for upgrading the flash memory in TCP/IP networks.

You must assign the AXIS 5400+ with an IP address, as described in *Assigning an IP address*, on page 22, before you can use this upgrading method.

Follow the instructions below to upgrade your print servers using AXIS ThinWizard:

1. Click the **Manage Network** button in the AXIS ThinWizard main menu.

2. Select a network group from the drop-down list. You can only update the servers that are included in the selected network group.
3. All AXIS servers included in the network group appear. Click the **Firmware** button to start the Upgrade Wizard.
4. Follow the instructions that are presented to you to complete the installation.

Refer to *Using AXIS ThinWizard*, on page 98, for more information about AXIS ThinWizard.

Upgrading over the Network using FTP

To upgrade over the network using FTP you will need the file with the new print server software. The name of this file is in the form `product_version.bin`, e.g. `5400+_620.bin` for software release 6.20. You can use any of the previously mentioned methods to obtain the new file.

You must assign the AXIS 5400+ with an IP address, as described in *Assigning an IP address*, on page 22, before you can use this upgrading method.

Follow the procedures below to upgrade the AXIS 5400+:

Caution

Be careful not to interrupt the file transfer. If the transfer is interrupted the AXIS 5400+ may have to be re-initialized by your dealer.

1. Log in to the AXIS 5400+ with the command:
`ftp <host name>`, or `ftp <IP address>`
2. You will be prompted for user id and password. Use the user id `root`, which has the default password `pass`.
3. Type the command:
`binary`
to change to binary transfer mode.

4. Type the command:

```
put <software name> FLASH
```

where <software name> is the name of the new print server software, e.g. 5400+_620.bin

5. Wait for the Flash loading operation to finish. This normally takes 1 to 4 minutes. The unit automatically restarts with the new print server software.
6. Log out using the command:

```
quit, bye or exit
```

depending on your FTP version.

Note:

Should you encounter any problem that prevents a successful upgrade over your network, it may become necessary to perform the flash loading operation via the parallel port, LPT1. In this case, you are advised to contact your dealer.

Upgrading using AXIS NetPilot

This method is recommended for upgrading the flash memory in NetWare networks. An Upgrade Wizard is available to guide you through the necessary procedures.

Follow the instructions below to upgrade your print servers:

1. Obtain the firmware file, using one of the methods presented on page 137.
2. Put the file in the AXIS NetPilot 'Upgrade' folder. This folder resides in the same folder as the AXIS NetPilot program and was created when AXIS NetPilot was installed on your client.
3. Start the Upgrade Wizard by clicking on the **Upgrade** icon on the AXIS NetPilot toolbar.
4. Proceed the installation by following the instructions that are presented to you in the Upgrade Wizard.

If you need more information, please refer to AXIS NetPilot on-line help.

Section 12 Test Button

The test button is located on the front right hand side of the AXIS 5400+ and is used for:

- Printing a test page, checking the connection to the printer.
- Printing a parameter list, showing the AXIS 5400+ current settings.
- Resetting the AXIS 5400+ parameters to the factory default settings.

The Test Page

Press the test button once to print a test page. If the test page prints, the parallel interface is functioning correctly. The printed Test Page contains basic information about the AXIS 5400+. It is recommended that you print a test page every time you have connected the AXIS 5400+ to a printer.

The Parameter List

Press the test button twice to print a parameter list showing the current AXIS 5400+ settings. This list provides comprehensive details of all the parameters and their current status. Refer to *Section 13 The Parameter List*, on page 143.

If you want to change any of the parameters, use one of the methods described in *Section 9 Management & Configuration*, on page 92.

Factory Default Settings

Follow the instructions below to reset the AXIS 5400+ to the factory default settings:

1. Remove the external power supply to switch off the AXIS 5400+.
2. Press and hold down the test button, while you plug the external power supply back in. Continue to hold down the test button, until the network indicator begins to flash at one second intervals. This should take approximately 5 seconds.
3. Release the test button and wait until the network indicator flashes at least five times.
4. Press and hold the test button again until the network indicator remains constantly lit.
5. Restart the AXIS 5400+ by disconnecting and reconnecting the external power supply.

The AXIS 5400+ is now reset to factory default settings.

Note:

All parameters except Node Address (NODE_ADDR), Internet Address (IP_ADDR) and DHCP enabled or disabled (DHCP_ENABLE.) are reset. If you want to change the these parameters, use either AXIS NetPilot or any standard Web browser. Please refer to *Section 9 Management & Configuration*, on page 92.

Section 13 The Parameter List

This appendix provides an overview of the AXIS 5400+ parameters. Please refer to the AXIS Network Print Server Technical Reference for a complete description of the parameters. Alternatively, you can access the Axis web site <http://www.axis.com>, where you can download the latest technical information.

The *Config* File

The left-hand column shows the parameters and their default values as they appear in the *config* file and the right-hand column shows the name of the parameters as they appear in the internal Web pages.

After you have changed them, most parameters take effect for the next print job. If *Requires Restart* appears in a parameter description, you must restart the AXIS 5400+, before the new setting for that parameter takes effect.

Please refer to *Section 9 Management & Configuration*, on page 92, for more information about how to change the parameters.

Note:

The password parameters, *ROOT_PWD* and *PROS_PWD* only appear when you are logged in to the AXIS 5400+ using *root*. The password parameters will not be printed when you are printing the parameter list using the test button.

--- GENERAL MENU	
NODE_ADDR.: 00 40 8C 10 00 86	Node Address
NETWORK SPEED: AUTO_SENSE, (AUTO_SENSE, 10_HALF_DX, 10_FULL_DX, 100_HALF_DX, 100_FULL_DX)	Network Speed
PS_NAME.: AXIS100086	Print Server Name (<i>100086 are the last six digits of the serial number</i>)
ROOT_PWD.: pass	Root Password
USERS.:	User and Printer Access List
BASE_URL.: www.axis.com	Base URL
CHARSET: ISO-8859-1 (ISO-8859-1, UTF-8)	Character Settings
LANG.: English (English, German, French, Spanish)	Language Menu
AXIS_PRINT_SYSTEM.: YES	Enable compatibility with AXIS Print System
HP_JETADMIN.: NO (YES, NO)	HP JetAdmin Support
DEF_OUT.:PR1 (PR1, PR2, PR3, PR4, PR5, PR6, PR7, PR8, LPT1)	Internal Printout Destination
SYS_LOC.:	System Location
SYS_CONT.:	System Contact

--- TCP/IP MENU	
TCP_ENB.: YES	TCP/IP Enabled
INT_ADDR.: 0 0 0 0	Internet Address
DEF_ROUT.: 0 0 0 0	Default Router Address (0.0.0.0 for no router)
NET_MASK.: 0 0 0 0	Net Mask (e.g. 255.255.255.0 for class C, 0.0.0.0 for auto-sense)
PROS_PWD.: netprinter	PROS Password
PROS_PRT.: 35	PROS TCP Port Number
LPD_BANN.: OFF (OFF, AUTO, LAST)	LPD Banner Page Mode
DHCP_ENB.: YES	DHCP Enabled
AUTOIP_ENB.: YES	Auto-IP enabled
BOOTP_ENB.: YES	BOOTP Enabled
RARP_ENB.: YES	RARP Enabled
WINS_ENB.: YES	WINS Enabled
WINS_ADDR1.: 0 0 0 0	Primary WINS Server Address
WINS_ADDR2.: 0 0 0 0	Secondary WINS Server Address
NBT_SCOPE_ID.:	NBT Scope ID (Defines the NetBIOS scope to be used with WINS name registration)
DNS_ENB.: YES	DNS Enabled
DNS_ADDR1.: 0 0 0 0	Primary DNS Server Address
DNS_ADDR2.: 0 0 0 0	Secondary DNS Server Address
DOMAIN_NAME.:	Domain Name (Defines the domain to which the AXIS 5400+ belongs)
SMTP_SERVER:	Mail Server that uses Simple Mail Transfer Protocol.
SLP_SCOPE_LIST.: DEFAULT	Defines the SLP scope to which the AXIS 5400+ belongs.
RTN_OPT.: NO	Reverse Telnet Options Enabled
RTEL_PR1.: 0	PR1 Reverse Telnet Port Number
RTEL_PR2.: 0	PR2 Reverse Telnet Port Number
RTEL_PR3.: 0	PR3 Reverse Telnet Port Number
RTEL_PR4.: 0	PR4 Reverse Telnet Port Number
RTEL_PR5.: 0	PR5 Reverse Telnet Port Number
RTEL_PR6.: 0	PR6 Reverse Telnet Port Number
RTEL_PR7.: 0	PR7 Reverse Telnet Port Number
RTEL_PR8.: 0	PR8 Reverse Telnet Port Number
--- SNMP MENU	
READ_COM.: public	Read Community
WRT_COM.: pass	Read/Write Community
TRAPADDR.: 0 0 0 0	Trap Address
TRAP_COM.: public	Trap Community
SYS_NAME.:	System Name
SNMP_AUT.: DISABLE (DISABLE, ENABLE)	Authentication Failure Trap
TRAP_PRT.: DISABLE (DISABLE, ENABLE)	Printer Failure Trap
--- NETWARE MENU	
NETW_ENB.: YES	NetWare Enabled
NETW_TRANSPORT_PROTOCOL.: DUAL_STACK (IPX_ONLY, IP_ONLY, DUAL_STACK)	NetWare Transport protocols Enabled
JOB_CHECK_DELAY.: 5	Job Check Delay (Print Server queue polling interval)
CONF_CHECK_DELAY.: 300	Configuration Check Delay (Interval between automatic configuration checks)
FR_802_3.: YES	IEEE 802.3 Frame Type Enabled
FR_ETH_2.: YES	Ethernet II Frame Type Enabled
FR_802_2.: YES	IEEE 802.2 Frame Type Enabled
FR_SNAP.: YES	SNAP Frame Type Enabled
NCP_BURST_MODE.: YES	NCP Burst Mode Enabled (Requires Restart)

PSERVER_NDS_TREE :	The PSERVER_NDS parameters specify which NDS tree or file server the AXIS 5400+ will login to. It also specifies the path to the print server object in the tree.
PSERVER_NDS_FILESERVER:	
PSERVER_NDS_DISTINGUISHED_NAME:	
PSERVER_BINDERY1.:	PSERVER Bindery 1 (Bindery file server name)
PSERVER_BINDERY2.:	PSERVER Bindery 2 (Bindery file server name)
PSERVER_BINDERY3.:	PSERVER Bindery 3 (Bindery file server name)
PSERVER_BINDERY4.:	PSERVER Bindery 4 (Bindery file server name)
PSERVER_BINDERY5.:	PSERVER Bindery 5 (Bindery file server name)
PSERVER_BINDERY6.:	PSERVER Bindery 6 (Bindery file server name)
PSERVER_BINDERY7.:	PSERVER Bindery 7 (Bindery file server name)
PSERVER_BINDERY8.:	PSERVER Bindery 8 (Bindery file server name)
PSERVER_BINDERY9.:	PSERVER Bindery 9 (Bindery file server name)
PSERVER_BINDERY10.:	PSERVER Bindery 10 (Bindery file server name)
PSERVER_BINDERY11.:	PSERVER Bindery 11 (Bindery file server name)
PSERVER_BINDERY12.:	PSERVER Bindery 12 (Bindery file server name)
PSERVER_BINDERY13.:	PSERVER Bindery 13 (Bindery file server name)
PSERVER_BINDERY14.:	PSERVER Bindery 14 (Bindery file server name)
PSERVER_BINDERY15.:	PSERVER Bindery 15 (Bindery file server name)
PSERVER_BINDERY16.:	PSERVER Bindery 16 (Bindery file server name)
NPRINTER1.:	NPRINTER/RPRINTER 1 (Print Server name and slot number)
NPRINTER2.:	NPRINTER/RPRINTER 2 (Print Server name and slot number)
NPRINTER3.:	NPRINTER/RPRINTER 3 (Print Server name and slot number)
NPRINTER4.:	NPRINTER/RPRINTER 4 (Print Server name and slot number)
NPRINTER5.:	NPRINTER/RPRINTER 5 (Print Server name and slot number)
NPRINTER6.:	NPRINTER/RPRINTER 6 (Print Server name and slot number)
NPRINTER7.:	NPRINTER/RPRINTER 7 (Print Server name and slot number)
NPRINTER8.:	NPRINTER/RPRINTER 8 (Print Server name and slot number)

NetBIOS/NetBEUI MENU	
LSLM_ENB.: YES	NetBIOS/NetBEUI Enabled
NB_FR_TYPE.: FR_AUTO (FR_AUTO, FR_802_2, FR_DIX)	NetBIOS Frame Type (Requires Restart)
LPRINT_1.: AX100086.LP1	Name Printer 1 (100086 are the last six characters of the serial number)
LLOGIC_1.: PR1 (PR1, PR2, PR3, PR4, PR5, PR6, PR7, PR8, LPT1)	Logical Printer for Printer 1
LPRINT_2.:	Name Printer 2 (100086 are the last six characters of the serial number)
LLOGIC_2.: PR2 (PR1, PR2, PR3, PR4, PR5, PR6, PR7, PR8, LPT1)	Logical Printer for Printer 2
LPRINT_3.:	Name Printer 3 (100086 are the last six characters of the serial number)
LLOGIC_3.: PR3 (PR1, PR2, PR3, PR4, PR5, PR6, PR7, PR8, LPT1)	Logical Printer for Printer 3
LPRINT_4.:	Name Printer 4 Name
LLOGIC_4.: PR4 (PR1, PR2, PR3, PR4, PR5, PR6, PR7, PR8, LPT1)	Logical Printer for Printer 4
LPRINT_5.:	Name Printer 5
LLOGIC_5.: PR5 (PR1, PR2, PR3, PR4, PR5, PR6, PR7, PR8, LPT1)	Logical Printer for Printer 5
LPRINT_6.:	Name Printer 6
LLOGIC_6.: PR6 (PR1, PR2, PR3, PR4, PR5, PR6, PR7, PR8, LPT1)	Logical Printer for Printer 6
LPRINT_7.:	Name Printer 7
LLOGIC_7.: PR7 (PR1, PR2, PR3, PR4, PR5, PR6, PR7, PR8, LPT1)	Logical Printer for Printer 7
LPRINT_8.:	Name Printer 8
LLOGIC_8.: PR8 (PR1, PR2, PR3, PR4, PR5, PR6, PR7, PR8, LPT1)	Logical Printer for Printer 8

NetWare

Windows

OS/2

Macintosh

UNIX

--- APPLETalk MENU

ATLK_ENB.: YES	AppleTalk Enabled
ATK_ZONE.:	AppleTalk Zone
ZONER_EN.: YES	HP Zoner Enabled
ATK_FONT.: DEFAULT (DEFAULT, 35N, ALL)	Font (PostScript Font Set)

AUTO_DT_PRN.: YES

APRINT_1.: AXIS100086_LPT1	Name Printer 1 (<i>100086 are the last six digits of the serial number</i>)
ATYPE_1.: LaserWriter	Type Printer 1
ALOGIC_1.: PR1 (PR1, PR2, PR3, PR4, PR5, PR6, PR7, PR8, LPT1)	Logical Printer for Printer
BINARY_TYPE_1.: TBCP (TBCP, BCP, NONE)	Binary Protocol for APRINT_1
APRINT_2. : AXIS100086_2	Name Printer 2
ATYPE_2.:	Type Printer 2
ALOGIC_2.: PR2 (PR1, PR2, PR3, PR4, PR5, PR6, PR7, PR8, LPT1)	Logical Printer for Printer 2
BINARY_TYPE_2.: TBCP (TBCP, BCP, NONE)	Binary Protocol for APRINT_2

--- PRINTER1 MENU

PR1_IN.: AUTO (NONE, AUTO)	Read Back Port (Read-Back of information)
PR1_BEF.:	String Before Print Job
PR1_STR.:	String Substitutions
PR1_CSET.: NONE (NONE, ISO>IBM, 7UK>IBM, 7SW>IBM, 7GE>IBM, 7FR>IBM, 7ND>IBM,)	Character Set Conversion
PR1_FILT.: NONE (NONE, POSTSCR, AUTO_PS)	Printer Language Translation
PR1_AFT.:	String After Print Job
PR1_DUMP.: NO	Hex Dump Mode Enabled
PR1_SIZE.: A4 (A4, LETTER, LEGAL, EXECUT)	PostScript Page Size
PR1_ORNT.: PORTR (PORTR, LANDS, R_PORTR, R_LANDS)	PostScript Page Orientation
PR1_FORM.: 66 0 100 60 30 50	PostScript Page Format (MPL, MPP, CPI, LPI, LM, TM)
PR1_FONT.:	PostScript Font (<i>Courier when not specified</i>)

--- PRINTER2 MENU

PR2_IN.: AUTO (NONE, AUTO)	Read back Port (Read-Back of information)
PR2_BEF.:	String Before Print Job
PR2_STR.:	String Substitutions
PR2_CSET.: NONE (NONE, ISO>IBM, 7UK>IBM, 7SW>IBM, 7GE>IBM, 7FR>IBM, 7ND>IBM,)	Character Set Conversion
PR2_FILT.: NONE (NONE, POSTSCR, AUTO_PS)	Printer Language Translation
PR2_AFT.:	String After Print Job
PR2_DUMP.: NO	Hex Dump Mode Enabled
PR2_SIZE.: A4 (A4, LETTER, LEGAL, EXECUT)	PostScript Page Size
PR2_ORNT.: PORTR (PORTR, LANDS, R_PORTR, R_LANDS)	PostScript Page Orientation
PR2_FORM.: 66 0 100 60 30 50	PostScript Page Format (MPL, MPP, CPI, LPI, LM, TM)
PR2_FONT.:	PostScript Font (<i>Courier when not specified</i>)

--- PRINTER3 MENU	
PR3_IN.: AUTO (NONE, AUTO)	Read Back Port (Read-Back of information)
PR3_BEF.:	String Before Print Job
PR3_STR.:	String Substitutions
PR3_CSET.: NONE (NONE, ISO>IBM, 7UK>IBM, 7SW>IBM, 7GE>IBM, 7FR>IBM, 7ND>IBM,)	Character Set Conversion
PR3_FILT.: NONE (NONE, POSTSCR, AUTO_PS)	Printer Language Translation
PR3_AFT.:	String After Print Job
PR3_DUMP.: NO	Hex Dump Mode Enabled
PR3_SIZE.: A4 (A4, LETTER, LEGAL, EXECUT)	PostScript Page Size
PR3_ORNT.: PORTR (PORTR, LANDS, R_PORTR, R_LANDS)	PostScript Page Orientation
PR3_FORM.: 66 0 100 60 30 50	PostScript Page Format (MPL, MPP, CPI, LPI, LM, TM)
PR3_FONT.:	PostScript Font (Courier when not specified)
--- PRINTER4 MENU	
PR4_IN.: AUTO (NONE, AUTO)	Read Back Port (Read-Back of information)
PR4_BEF.:	String Before Print Job
PR4_STR.:	String Substitutions
PR4_CSET.: NONE (NONE, ISO>IBM, 7UK>IBM, 7SW>IBM, 7GE>IBM, 7FR>IBM, 7ND>IBM,)	Character Set Conversion
PR4_FILT. : NONE (NONE, POSTSCR, AUTO_PS)	Printer Language Translation
PR4_AFT.:	String After Print Job
PR4_DUMP.: NO	Hex Dump Mode Enabled
PR4_SIZE.: A4 (A4, LETTER, LEGAL, EXECUT)	PostScript Page Size
PR4_ORNT.: PORTR (PORTR, LANDS, R_PORTR, R_LANDS)	PostScript Page Orientation
PR4_FORM.: 66 0 100 60 30 50	PostScript Page Format (MPL, MPP, CPI, LPI, LM, TM)
PR4_FONT.:	PostScript Font (Courier when not specified)
--- PRINTER5 MENU	
PR5_IN.: AUTO (NONE, AUTO)	Read Back Port (Read-Back of information)
PR5_BEF.:	String Before Print Job
PR5_STR.: 010A020D0A	String Substitutions
PR5_CSET.: NONE (NONE, ISO>IBM, 7UK>IBM, 7SW>IBM, 7GE>IBM, 7FR>IBM, 7ND>IBM,)	Character Set Conversion
PR5_FILT.: NONE (NONE, POSTSCR, AUTO_PS)	Printer Language Translation
PR5_AFT.:	String After Print Job
PR5_DUMP.: NO	Hex Dump Mode Enabled
PR5_SIZE.: A4 (A4, LETTER, LEGAL, EXECUT)	PostScript Page Size
PR5_ORNT.: PORTR (PORTR, LANDS, R_PORTR, R_LANDS)	PostScript Page Orientation
PR5_FORM.: 66 0 100 60 30 50	PostScript Page Format (MPL, MPP, CPI, LPI, LM, TM)
PR5_FONT.:	PostScript Font (Courier when not specified)

--- PRINTER6 MENU

PR6_IN.: AUTO (NONE, AUTO)	Read Back Port (Read-Back of information)
PR6_BEf.:	String Before Print Job
PR6_STR.: 010A020D0A	String Substitutions
PR6_CSET.: NONE (NONE, ISO>IBM, 7UK>IBM, 7SW>IBM, 7GE>IBM, 7FR>IBM, 7ND>IBM,)	Character Set Conversion
PR6_FILT.: NONE (NONE, POSTSCR, AUTO_PS)	Printer Language Translation
PR6_AFT.:	String After Print Job
PR6_DUMP.: NO	Hex Dump Mode Enabled
PR6_SIZE.: A4 (A4, LETTER, LEGAL, EXECUT)	PostScript Page Size
PR6_ORNT.: PORTR (PORTR, LANDS, R_PORTR, R_LANDS)	PostScript Page Orientation
PR6_FORM.: 66 0 100 60 30 50	PostScript Page Format (MPL, MPP, CPI, LPI, LM, TM)
PR6_FONT.:	PostScript Font (Courier when not specified)

--- PRINTER7 MENU

PR7_IN.: AUTO (NONE, AUTO)	Read Back Port (Read-Back of information)
PR7_BEf.:	String Before Print Job
PR7_STR.: 010A020D0A	String Substitutions
PR7_CSET.: NONE (NONE, ISO>IBM, 7UK>IBM, 7SW>IBM, 7GE>IBM, 7FR>IBM, 7ND>IBM,)	Character Set Conversion
PR7_FILT.: NONE (NONE, POSTSCR, AUTO_PS)	Printer Language Translation
PR7_AFT.:	String After Print Job
PR7_DUMP.: NO	Hex Dump Mode Enabled
PR7_SIZE.: A4 (A4, LETTER, LEGAL, EXECUT)	PostScript Page Size
PR7_ORNT.: PORTR (PORTR, LANDS, R_PORTR, R_LANDS)	PostScript Page Orientation
PR7_FORM.: 66 0 100 60 30 50	PostScript Page Format (MPL, MPP, CPI, LPI, LM, TM)
PR7_FONT.:	PostScript Font (Courier when not specified)

--- PRINTER8 MENU

PR8_IN.: AUTO (NONE, AUTO)	Read Back Port (Read-Back of information)
PR8_BEf.:	String Before Print Job
PR8_STR.: 010A020D0A	String Substitutions
PR8_CSET.: NONE (NONE, ISO>IBM, 7UK>IBM, 7SW>IBM, 7GE>IBM, 7FR>IBM, 7ND>IBM,)	Character Set Conversion
PR8_FILT.: POSTSCR (NONE, POSTSCR, AUTO_PS)	Printer Language Translation
PR8_AFT.:	String After Print Job
PR8_DUMP.: NO	Hex Dump Mode Enabled
PR8_SIZE.: A4 (A4, LETTER, LEGAL, EXECUT)	PostScript Page Size
PR8_ORNT.: PORTR (PORTR, LANDS, R_PORTR, R_LANDS)	PostScript Page Orientation
PR8_FORM.: 66 0 100 60 30 50	PostScript Page Format (MPL, MPP, CPI, LPI, LM, TM)
PR8_FONT.:	PostScript Font (Courier when not specified)

--- LPT1 Menu

L1_CENTR.: HISPEED (IBM_PC, STNDRD, FAST, HISPEED)	Centronics Interface Timing LPT1
L1_BSYTM.: 60	Busy Status Time-Out LPT1 (All status reporting disabled if set to 0)
L1_MGM_INFO. : AUTO (DISABLE, AUTO)	Printer Management Information LPT1
L1_COMMENT.:	Optional user comment describing the printer at LPT1
L1_BIDIR: AUTO (DISABLE, AUTO)	Bi-directional printing LPT1

--- e-mail Menu

EMAIL_NOTIFICATION: YES	e-mail Notification
REPLY_ADDRESS:	Network Administrator e-mail address
PAPER_JAM_ADDRESS:	e-mail address of paper-jam Administrator
OUT_OF_PAPER_ADDRESS:	e-mail address of Out-Of-Paper Administrator
TONER_LOW_ADDRESS:	e-mail address of Toner-Low Administrator
NO_TONER_ADDRESS:	e-mail address of No-Toner Administrator
PRINTER_OFFLINE_ADDRESS:	e-mail address of Printer-Offline Administrator

Section 14 Technical Specifications

Supported Systems

Novell NetWare: Versions 3.11, 3.12, 4.10 and above, supporting both NDS and Bindery Emulation. A maximum of 16 bindery file servers and 96 print queues can be served.
 NDPS supported by versions 4.11 and above.
 NetWare5 and Pure IP supported.
 User messages are also supported.
 Print Methods: RPRINTER/NPRINTER, PSERVER, NDPS.

Microsoft LAN Manager: LAN Manager 2.0c and above, running under OS/2 ver 1.3 and above.

IBM LAN Server: LAN Server 1.3 and above, running under OS/2 ver 1.3 and above including OS/2 Warp, OS/2 Warp Connect.

Microsoft Windows: Windows NT ver. 3.5 and above, Windows 2000, Windows for Workgroups, Windows 95, Windows 98.

LANtastic: LANtastic 7.0, from any of the supported Windows clients, defined above.

All Operating Systems supporting the TCP/IP suite of protocols, including:

BSD Systems: BSD 4.2, 4.3, 4.4, SunOS4 (Solaris 1.x), DEC Ultrix etc.

System V Systems: R3, R4, AT&T, Interactive, SCO, SunOS5 (Solaris 2.x), HP-UX, IBM AIX, Silicon Graphics IRIX, DEC Alpha OSF/1, BULL (BOS, AIX).

Other Systems: IBM (MVS, VM, VSE, OS/400), DEC VMS, guidelines for other systems.

Print Methods: LPD, FTP, PROS (named pipe & filtered), Reverse Telnet, IPP.

Apple EtherTalk: Print Method: AppleTalk Phase 2.

WWW: Netscape Navigator 4.0 and higher and MS Internet Explorer 4.0 and higher.

Supported Protocols

NetWare:	IPX, SAP, RIP, SPX, SNMP, NCP (extended with NDS), NLSP, DIAG, TCP/IP.
Windows and OS/2:	NetBIOS/NetBEUI or TCP/IP, WINS.
LANtastic	NetBIOS/NetBEUI.
TCP/IP:	LPD, FTP, Telnet, Reverse Telnet, PROS, BOOTP, ARP, RARP, DHCP ICMP, Auto-IP, IP, TCP, UDP, HTTP, SNMP, TFTP, SLPv2, Dynamic DNS, IPP.
Apple EtherTalk:	AARP, ATP, DDP, NBP, PAP, RTMP, ZIP.
Network Management	SNMP-MIB II compliant (over UDP/IP and IPX), host resource MIB compliant (over UDP/IP and IPX), private enterprise MIB included. LAN Network Manager for OS/2. Print server status in NWAdmin/P_CONSOLE.
Hardware	32 bit 100 MHz RISC Controller, 1 Mbyte Flash memory. 2 MB RAM.
Logical Connection	NWay support to provide auto-detection of the network speed. Running simultaneously any combination of the supported protocols. Use of IEEE802.2, IEEE802.3, SNAP and Ethernet II frame types simultaneously.
Attachments	RJ-45 connector (Category 5 Unshielded Twisted Pair) for 10baseT Ethernet and 100baseTX Fast Ethernet.

NetWare

Windows

OS/2

Macintosh

UNIX

Security

- UNIX: Root password. User access list and printer access.
- NetWare: Encrypted passwords. Packet Signature supported.

Logical Printers The logical printer ports can be programmed to perform auto ASCII to PostScript conversion, string before and after job, string substitution and character set conversion.

Parallel Printer One IEEE 1284 compliant high-speed parallel port, 36-pin Centronics connector. Sustained throughput over 1 Mbyte/s using NetWare. Bi-directional support for Apple, Reverse Telnet, PROS. ECP support.

Front Panel 2 LED indicators: Power and Network.
Test button for information printouts.


Power Consumption Power provided by external supply:
Maximum 200 mA at 12 VDC. (Type PS-B, 12V, 500 mA).

Dimensions Height x Width x Depth
0.9 x 2.4 x 4.8 inches (2.4 x 6.1 x 12.1 cm)

Weight 0.22 lb. (0.1 kg)

Environmental Temperature: 40 - 105° F (5 - 40° C).
Humidity: 10 - 95% non-condensing.

Approvals

- EMC: EN 55022/1994, EN50082-1/1992. FCC Class A. 
- Safety: EN 60950.

All specifications are subject to change without prior notice

Section 15 Glossary

NetWare

Active Directory Active Directory - a structure supported by Windows 2000 that lets any object on a network be tracked and located. Active Directory is the directory service used in Windows 2000 Server and provides the foundation for Windows 2000 distributed networks.

Windows

AIX Advanced Interactive eXecutive. A version of the UNIX operating system from IBM that runs on various IBM computers including Mainframe systems.

OS/2

ARP Address Resolution Protocol. A protocol within the TCP/IP suite of network protocols that allows a host to find the physical address of a node on the same network. It is available in UNIX, Windows 95, Windows 98 and Windows NT. ARP cannot be used across routers.

Macintosh

BOOTP BOOT Protocol. A TCP/IP protocol, used for downloading start-up information such as the IP address to hosts on the network. It is only available in UNIX. BOOTP requires a BOOTP daemon on your system. A request made to an active BOOTP daemon initiates a search of the Boot Table for an entry matching the print server's Ethernet address. If a matching entry is found, the daemon downloads the IP address to the print server.

UNIX

BSD Berkeley Software Distribution. The University of California, Berkeley additions to the UNIX operating system.

Client-Server Printing In a Client-Server printing environment, print jobs are sent to a network server, where they are spooled, and then sent to a print server.

***config* file** This is a file that resides in the print server's memory and contains all the parameters that determine the AXIS 5400+ functionality. By editing the *config* file (changing the parameter settings), you can configure the AXIS 5400+ to meet the printing needs of your network.

- DHCP** Dynamic Host Configuration Protocol. DHCP is available in Windows NT, NetWare 5 and UNIX systems, and allows for the automatic but temporary assignment of IP addresses from a central pool. DHCP causes the selected host to automatically allocate and download an unused IP address to the requesting print server. It also provides validation data that defines how long the IP addresses will remain valid.

To fully benefit from this method, the AXIS 5400+ also supports the WINS host name resolution protocol, which is available in Windows NT networks.
- DNS** Domain Name Service. Reflects the server names and addresses within a network.
- Flash Memory** The print server software is stored in Flash Memory. This memory is provided by a silicon chip that like any other ROM device, retains data content even after power is removed. However, Flash Memory is unique because it allows its data to be erased and re-written. This means that you can install software updates for your server as soon as they become available, without having to replace any parts. The new software is simply loaded into the server over the network.
- FTP** File Transfer Protocol. A TCP/IP protocol used for logging in to network servers and for transferring files.
- HTML** Hypertext Markup Language. A standard hypertext language used for creating World Wide Web pages and other hypertext documents.
- HTTP** Hypertext Transfer Protocol. The TCP/IP protocol for Web based communication.
- IP** Internet Protocol. The TCP/IP session-layer protocol that regulates packet forwarding by tracking IP addresses, routing outgoing messages and recognizing incoming messages.
- LED** Light Emitting Diode.

NetWare

Logical Printer A logical printer acts as a filter between the network and the physical printer. It appears to the user as a normal printer with additional characteristics. For example a UNIX workstation may only send a line feed (LF) to a shared printer that needs carriage return (CR) and LF. The logical printer can solve this problem by adding a CR.

Windows

MIB Management Information Base. A database of network configuration information used by SNMP and CMIP to monitor or change network settings.

NCP NetWare Core Protocol. Network clients use the NCP to request services of servers, and servers use NCP to provide services, such as file and print services.

OS/2

NDS NetWare Directory Services. A hierarchical data base that manages NetWare network resources such as servers and volumes.

Peer-to-Peer Printing In a Peer-to-Peer printing environment, printjobs are sent directly to the print server from the user.

Macintosh

RARP Reverse Address Resolution Protocol. A TCP/IP protocol used for downloading IP addresses in UNIX networks. It requires a RARP daemon on your system, and only operates within a single network segment. A request made to an active RARP daemon initiates a search of the Ethernet Address Table for an entry matching the print server's Ethernet address. If a matching entry is found, the daemon downloads the IP address to the print server.

UNIX

RISC Reduced Instruction Set Computing. A processor that recognizes only a limited number of assembly-language instructions.

SAP Service Advertising Protocol. A NetWare network name advertising service that e.g. file servers can use for advertising their existence to network clients.

SNMP Simple Network Management Protocol. A TCP/IP protocol for managing and monitoring nodes on a network.

- TCP** Transmission Control Protocol. The connection-oriented, transport-level protocol used in the TCP/IP suite of protocols.
- TFTP** Trivial File Transport Protocol. A simpler version of the FTP protocol that is used by the print server for automatic downloading of config files.
- UNIX** A 32-bit multi-tasking, multi-user operating system originally developed by AT&T.
- URL** Uniform Resource Locator. A way of specifying the location of publicly available information on the Internet.
- WINS** Windows Internet Name Service. A NetBIOS Name Server that maps NetBIOS names to dynamically assigned IP addresses.
- Wizard** A special form of user assistance that automates a task through a dialog with the user. Wizards help the user to accomplish tasks that are complex and require experience, and even for the experienced user can help to speed up an operation.

Index

A

Account file 111, 112
 Active Directory 154
 AIX 154
 ASCII to Postscript Conversion 89
 Autodetect Printer Type 73
 Auto-IP 31, 120
 axinstall 79
 AXIS Gateway Configuration Utility 55
 AXIS MIB 116
 AXIS NetPilot 102
 AXIS Print Monitor 41
 AXIS Print System 33
 AXIS Print Utility for OS/2 69
 AXIS Print Utility for Windows 47

B

Basic setup
 AXIS NetPilot 56
 TCP/IP 22
 Bi-directional Printing 91

C

Character Set Conversion 85
 Chooser 72
 config file 92, 143
 Configuration methods
 AXIS NetPilot
 Parameter List Editor 104
 Property pages 103
 FTP 109
 HP tools
 HP JetAdmin 117
 HP Web JetAdmin 117
 NetWare Administrator 118

PCONSOLE 118
 SNMP 115
 Telnet 112
 Web browser 94

D

DDNS 24
 Debugging Print Problems 91

E

e-mail Notification 120
 Ethernet Address 22
 ETRAX100 12

F

Factory default settings 142
 Flash memory 137
 FTP 109

H

Hex Dump Mode 91
 Host Name 24
 HP JetAdmin 117
 HP Web JetAdmin 117

I

Installation guide 20
 Installation Summary 21
 Internet Address 57
 IPP 120
 IPP client 124
 IPP Printing Requirements 123

L

Language Settings 96

Language Support 134

LANtastic 52

Logical Printers 84

M

Macintosh

 Choosing a printer 73

 Installing the print server 72

 Setting the Internet address 76

Multi-Language Support 134

N

NDPS 54

NDS 60

NetWare

 Advanced installation 59

 Basic installation 56

 NDPS 54, 122, 124, 125

NetWare printing modes

 Print Server Mode 65

 Remote Printer Mode 65

Network connectors 16

Network indicator LED 17

Network Speed 135

O

OS/2

 AXIS Print Utility for OS/2 69

 Installing the print server 69

P

Parameter List 143

Physical description 16

Power indicator LED 17

Printer information 107

Printer port 16

Printing

 parameter list 141

 Test page 141

Pure IP 62

S

Setting the Internet address

 ARP 28, 29

 BOOTP 30

 DHCP 27

 RARP 29

Setting up

 Macintosh 72

 NetWare 53

 OS/2 66

 UNIX 78

 Windows 32

SNMP 115

Status file 111, 114

String Functions 86

String Substitutions 87

Support services 5

T

Test button 17, 141

TFTP 27, 31

U

UNIX Printing methods

 FTP 82

 LPD 81

 PROS A 82

 PROS B 83

 Reverse Telnet 83

Upgrade Wizard 140
Upgrading the firmWare from the internal
web pages 138

W

Web Flash-Loading 136

Windows 3.1
 AXIS Print Utility for Windows 47
 Peer-to-peer printing 49

Windows 95
 Installing printer ports 34

Windows 98
 Installing printer ports 34

Windows for Workgroups
 AXIS Print Utility for Windows 47
 Client-server printing
 Client setup 51
 Server setup 50

Peer-to-peer printing 49

WINS 24, 27