

AXIS 5810

A Bluetooth™ Print Plug

Quick Start

BLUETOOTH™ is a trademark owned by its proprietor and used by Axis Communications AB under license

Regulatory Information

Tested to comply with FCC Standards FOR HOME OR OFFICE USE.

This AXIS 5810 must be installed and used in strict accordance with the instructions given in the user documentation. The AXIS 5810 complies with the following radio frequency and safety standards:

Canada - Industry Canada (IC)

This device complies with RSS 210 of Industry Canada

Europe - EU Declaration of Conformity

This device complies with the requirements of the R&TTE Directive 1999/5/EC with essential test suites as per standards:

EN 60950 Safety of Information Technology equipment

ETS 300 328 Technical requirements for radio equipment

ETS 300 826 General EMC requirements for radio equipment



USA - Federal Communications Commission FCC

This device complies with 47 CFR Part 15 of FCC Rules

Operation of the device is subject to the following two conditions:

- (1) This device may not cause harmful interference
- (2) This device must accept any interference that may cause undesired operation.

AXIS 5810 Quick Start R1.0
Copyright © Axis Communications AB 2002

Part No: 18755
Date: February 2002

Table of Contents

Regulatory Information	2
AXIS 5810 - A Bluetooth Print Plug	4
Package Contents	5
Technical Specifications Overview	6
Connecting the AXIS 5810 to a Printer	7
Requirements for Wireless Printing	8
AXIS Wireless Printing Utility	10
How to print from a laptop	12
Upgrading the firmware	14
Troubleshooting	16
Terms and Definitions	18
About Bluetooth	21
About Axis	22
Index	23

AXIS 5810 - A Bluetooth Print Plug

The AXIS 5810 print plug transforms a standard printer into a wireless printing station with the ability to receive print jobs from a laptop or mobile phone equipped with Bluetooth™ wireless technology.

Instant Printing:

Simply connect the AXIS 5810 to the printer's parallel port and send the print job from your laptop or mobile phone.

Follow the simple instructions in this booklet for instant wireless printing.

Please refer to *Terms and Definitions* on page 18 if you are unsure of any specific details in these instructions.



Package Contents

Verify the contents of the AXIS 5810 package using the checklist below. Please contact your dealer if anything is missing or damaged.

Hardware	Model	Part Number	
A Bluetooth™ Print Plug	AXIS 5810	0133-001-02	
Power Supply See the <i>Technical Specifications Overview</i> on page 6 for details	PS-F	Europe	18424
		UK	18425
		Australia	18428
		USA	18480
		Japan	18480
Media	Title	Part Number	
Quick Start	AXIS 5810 Quick Start R1.0	18755	
CD	AXIS Product CD R2.3	19005	

Technical Specifications Overview

Windows

AXIS Wireless Printing Utility and AXIS Wireless Upgrade Utility support Windows 98SE, ME, NT4 (service pack 6), 2000 (service pack 2), XP

Other Platforms

The AXIS 5810 supports all clients supporting any of the *Bluetooth* printing profiles (HCRP, OPP, SPP, APP) listed below.

Bluetooth™

The AXIS 5810 complies with *Bluetooth* version 1.1

Bluetooth™ Profiles

The following implementations of *Bluetooth* user models are supported:
HCRP - Hard Copy Cable Replacement Profile, **OPP** - Object Push Profile,
SPP - Serial Port Profile, **APP** - AXIS Print Profile (Axis proprietary)

Power Supply

Use only - **PS-F**, AXIS SA-0515G AC-Adaptor, 5V DC, 1500mA

Firmware Upgrade

Upgrade the firmware using AXIS Wireless Upgrade Utility described in *Upgrading the firmware* on page 14.

Connecting the AXIS 5810 to a Printer

1. Make sure that the printer is switched off.
2. Make sure that the external power supply is disconnected from the AXIS 5810.
3. Connect the AXIS 5810 to the parallel port on the printer.
4. Start the printer and make sure that it is ready for use.

Note: If the green LED lights up, power is supplied via the parallel port (pin 18, 5VDC+/-5%/500 mA), and no external power supply is needed. Please refer to the documentation of your printer for more information.

5. Connect the external power supply to the AXIS 5810.
6. Wait approximately 15 seconds and press the test button.
A test page will be printed on the connected printer. Refer to *Troubleshooting* on page 16 for more information on the test button and test page.

Requirements for Wireless Printing

Printing from a laptop:



System requirements

- **Windows** 98SE, Me, NT SP6, 2000 SP2 or XP

Hardware requirements

- **Toshiba laptop** with integrated *Bluetooth* support - or -
Laptop with *Bluetooth* support and client software supporting the HCRP profile - or -
Laptop with a *Bluetooth* PC Card (Motorola, Toshiba, IBM, Dell or NEC)
Please refer to the *Bluetooth* PC Card manual for installation and usage instructions.

Software requirements

- **Bluetooth drivers from Toshiba** version 1.02.09 or later - or -
Bluetooth Software Suite version 1.09 or later
- **AXIS Wireless Printing Utility** version 1.20 or later
All Axis software and upgrades are available free of charge from the AXIS Product CD or from the Axis web site at www.axis.com

Printing from a mobile phone:

Hardware requirements

- Ericsson mobile phone equipped with *Bluetooth* wireless technology e.g. Ericsson R520, Ericsson T68, Ericsson T39

Refer to the user documentation of your mobile phone for information on how to send print jobs wirelessly.



Note: This section describes the requirements for wireless printing from a laptop or mobile phone. Printing from HCRP, SPP or OPP *Bluetooth* 1.1 compliant clients is possible but is not described in this booklet. Refer to the user documentation of your client for information.

AXIS Wireless Printing Utility

AXIS Wireless Printing Utility is a software tool for locating and printing to Axis wireless print servers.

1. Download AXIS Wireless Printing Utility from the AXIS Product CD (v 2.3 or later) or from the Axis web site at www.axis.com
2. Install AXIS Wireless Printing Utility on your laptop.

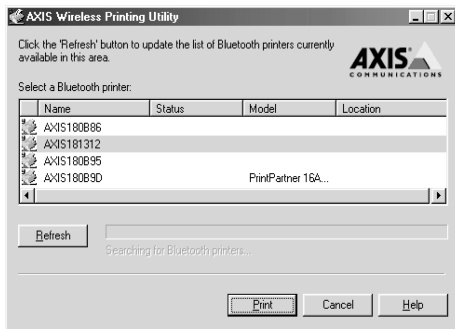
A default printer object, **Axis Wireless Printer**, will be automatically installed on your laptop with a standard PCL 3 driver that is supported by most Laser-type printers.

Note: If you have a printer that does not support PCL 3, you need to add a printer using the standard **Add Printer Wizard** and connect the printer to the **Axis Wireless Port**. (See the AXIS Wireless Printing Utility help file for more information)

You are ready to print when you have successfully connected the AXIS 5810 to a printer and installed the required hardware and software listed in *Requirements for Wireless Printing* on page 8.

How to print from a laptop

1. From any Windows application (e.g. Word), select **File | Print**.
2. Select **AXIS Wireless Printer** and click **OK**.
3. AXIS Wireless Printing Utility will automatically start searching for wireless print servers.



4. Select a printer from the list and click **Print**.

- The first time this search is performed, the dialog box will show the printers that were detected in the area. This list of printers is saved and will show up the next time you want to print.
- Click **Refresh** to update the list of available *Bluetooth* printers.
- You can print to the desired printer as soon as it appears in the list. You do not have to wait until the search is completed.
- The AXIS 5810 appears in the list with the name **AXISxxxxxx** (The Xs represent the last six characters of the AXIS 5810 serial number, found on the product label e.g. AXIS1814FF)

Note: As the AXIS 5810 supports SPP (Serial Port Profile), you can also send a print job using any standard SPP client.

Upgrading the firmware

AXIS Wireless Upgrade Utility is software that allows you to upgrade your AXIS 5810 with the latest available firmware.

Install **AXIS Wireless Upgrade Utility** on your laptop. Follow the simple instructions to upgrade the **AXIS 5810** firmware.

Note: Before upgrading, you need to download and save the **AXIS 5810** firmware file temporarily on your hard disk. All Axis firmware files are available from the Axis web site at <http://www.axis.com> or from the Axis product CD.

1. Start **AXIS Wireless Upgrade Utility** and click **Next**.
2. Click **Search** to list the available *Bluetooth* print plugs and print servers.

- Each detected print plug/server will be listed with the following information:

Address - *Bluetooth* address / serial number

Name - **AXIS** followed by the last six characters of the serial number

Model - AXIS 5810 (print plug) or AXIS 5800+ Mobile (print server)

Firmware version - e.g. 6.30

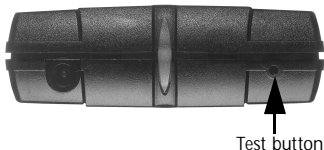
- Select the AXIS 5810 from the list and click **Next**.
- Enter the path or browse to the directory where you saved the print server flash file. Click **Next**.
- Verify that you have selected the correct print plug/server and the correct firmware file and click **Next** to complete the operation.

Troubleshooting

If you experience problems when trying to print:

- Make sure your AXIS 5810 and the other *Bluetooth* devices it is communicating with are located within 10 meters (approx. 33 feet) from each other, closer if there are objects in between.
- If you perform a search while a specific printer is busy printing, that specific printer will not show up in the list. Check if the printer is busy and try again.
- Check that your laptop is properly installed and configured for *Bluetooth* printing.
- For additional help, refer to the **AXIS Wireless Printing Utility Help file** from the Windows **Start | Programs** menu.
- Basic instructions for printing over *Bluetooth* wireless technology from a laptop and mobile phone are described in this document. For additional installation instructions, refer to the Bluetooth Software Suite 1.09 user documentation, mobile phone user documentation or SPP/ OPP/ HCRP client documentation.

- To print a test page on the printer, press the test button on the AXIS 5810 using a pointed object e.g. a stretched paper clip. The test page contains the following information:



- AXIS 5810 technical information (memory, *Bluetooth* address, name, etc.)
- *Bluetooth* status information (firmware, module status, etc.)
- PJJ printers only - printer information (manufacturer, model, capabilities, etc.)

Make sure that the *Bluetooth* module status is **OK**. If not, disconnect and then reconnect the external power supply, wait approximately 15 seconds and press the test button. If this doesn't work, contact your local reseller/ distributor or Axis technical support for assistance.

- The technical support addresses are listed on the back cover of this booklet.

Terms and Definitions

AXIS Wireless Printing Utility - software for sending a print job to a printer with a wireless print server or print plug.

Note:

Please refer to the AXIS Wireless Printing Utility Help pages for additional help and troubleshooting. The help files can be opened from the Windows **Start | Programs** menu.

AXIS Wireless Printer - a virtual printer created in your list of printers. Selecting AXIS Wireless Printer launches AXIS Wireless Printing Utility which will search the area for AXIS Wireless print servers i.e. AXIS 5810, AXIS 5800+ Mobile

AXIS Wireless Upgrade Utility - software for upgrading the AXIS 5810 firmware

Bluetooth™ PC Card - hardware installed on your laptop in order to enable *Bluetooth* transmission

Bluetooth Profiles- Implementations of *Bluetooth* user models. The user models describe a number of user scenarios where *Bluetooth* performs the radio transmission. Supported profiles are GAP, HCRP, OPP, SPP and Axis proprietary APP

Bluetooth Software Suite - software that comes with the *Bluetooth* PC Card for the *Bluetooth* connection setup

Firmware - AXIS 5810 internal software that controls the functionality of the print plug

Printer Driver - AXIS Wireless printing Utility uses a default printer driver which works with most Laser-type printers. The default printer driver is installed on your laptop automatically with AXIS Wireless Printing Utility

Printer Name -The name consists of **AXIS** followed by last six characters in the serial number. The serial number and the name of the print plug are found on the label on the AXIS 5810. This name cannot be changed.

Print Server Flash File - a firmware file available on the Axis web site or from the AXIS Product CD. Download and save this file on your hard disk prior to upgrading the AXIS 5810

Serial Number- The serial number is found on the label on the AXIS 5810. The serial number is identical with the *Bluetooth* address

Windows Application - a Windows program where you can create a printable document e.g. Word, Excel, Paint, Wordpad

About Bluetooth™

Bluetooth wireless technology makes it possible to connect any compatible portable and stationary communication device as easily as switching on the lights. Without a single inch of cable. The technology is based on a radio link that offers fast and reliable transmissions of both voice and data. Documents will be sent at a speed of 1Mbit/s and the *Bluetooth* wireless technology will carry up to three high-quality voice channels simultaneously.

The *Bluetooth* wireless technology uses a globally available frequency range intended to ensure communication compatibility worldwide.

The *Bluetooth* wireless technology is a global specification for personal area wireless connectivity.



About Axis

Axis develops solutions for user-friendly and secure communication over wired and wireless networks. The company is a worldwide market leader in network connectivity, with products for the office, facility and industrial environments.

Axis was founded in 1984 and is listed on the Stockholm Exchange O-list (XSSE:AXIS). With more than 300 employees and offices in 15 countries, Axis operates globally in cooperation with distributors and OEM partners in 70 countries. Approximately 95 percent of production is exported out of Sweden.

Information about Axis can be found at www.axis.com

Index

A

- APP **6**
- AXIS Wireless Printer **10, 12, 18**
- AXIS Wireless Printing Utility **12, 18**
- AXIS Wireless Upgrade Utility **14, 18**

B

- Bluetooth **21**
- Bluetooth drivers **8**
- Bluetooth PC Card **18**
- Bluetooth Profiles **6**
- Bluetooth Software Suite **19**
- Bluetooth version **6**

E

- External power supply **7**

F

- Firmware **14, 19**

- Flash File **20**

H

- Hardware requirements **8, 9**

- HCRP **6**

L

- Laptop **8**
- Laser printer **10**

M

- Mobile Phone **9**

O

- Object **10**
- OPP **6**

P

- PCL driver **10**
- PCL printer driver **10**
- Power Supply **5, 6, 7**
- Printer Driver **19**
- Printer Name **19**
- Printer object **10**

R

- Regulatory information **2**

S

Serial Number **20**

Software requirements **8**

SPP **6**

T

Test button **7**

Test page **7, 17**

Toshiba laptop **8**

U

Upgrades **8**

Upgrading the firmware **14**

W

Windows Application **20**

Windows version **6**