

AXIS

# OfficeBasic

Print Server

User's Manual



The perfect **Print Server** for the **small office** environment with up to 50 users

**AXIS**<sup>®</sup>  
COMMUNICATIONS  
[www.axis.com](http://www.axis.com)

# **AXIS OfficeBasic Print Server**

**User's Manual**

## Safety Notices

Please take some time to read through the safety notices before installing the AXIS OfficeBasic.

**Caution!** - must be observed to avoid loss of data or damage to your equipment.

**Important:** - must be observed to avoid operational impairment.

Do not proceed beyond any of the above notices unless you have taken appropriate measures!

## Electromagnetic Compatibility (EMC) notices - USA

This equipment generates and radiates radio frequency energy and if not installed and used in accordance with the instruction manual, may cause interference to radio communications. It has been tested and found to comply with the limits for a Class A computing device pursuant to Subpart B of Part 15 of FCC rules, which are designed to provide reasonable protection against such interference when operated in a commercial environment. Operation of this equipment in a residential area is likely to cause interference in which case the user at his own expense will be required to take whatever measures may be required to correct the interference. Shielded cables should be used with this unit to ensure compliance with the Class A limits.

## Electromagnetic Compatibility (EMC) notices - Europe



This digital equipment fulfils the requirements for radiated emission according to limit B of EN55022/1994, and the requirements for immunity according to EN50082-1/1992 residential, commercial, and light industry (Compliance is not valid for unshielded network and printer cables).

## Liability

Every care has been taken in the preparation of this manual; if you detect any inaccuracies or omissions, please inform us by contacting your local Axis office. AXIS Communications AB cannot be held responsible for any technical or typographical errors and reserves the right to make changes to the product and manuals without prior notice. Axis Communications AB makes no warranty of any kind with regard to the material contained within this document, including, but not limited to, the implied warranties of merchantability and fitness for a particular purpose. Axis Communications AB shall not be liable nor responsible for incidental or consequential damages in connection with the furnishing, performance or use of this material.

## Year 2000 compliance

Axis Communications warrants that the AXIS OfficeBasic, with software versions 6.00 or later, is Year 2000 compliant.

## Axis' Trademarks

ThinServer.

## Other Trademark Acknowledgments

DOS, Ethernet, Internet Explorer, LAN Manager, LAN Server, Microsoft, Netscape and Windows, are registered trademarks of the respective holders.

AXIS OfficeBasic User's Manual

Revision 1.0

Part No: 16852

Date: September 1999

Copyright © Axis Communications AB, 1999

# Preface

Thank you for purchasing the AXIS OfficeBasic Print Server. This product has been developed to connect your printers anywhere in your network, allowing all network users access to the shared printer resources.

## About this manual

This manual provides introductory information as well as detailed instructions on how to set up and manage the AXIS OfficeBasic in various network environments. It is intended for everyone involved in installing and managing the AXIS OfficeBasic. To fully benefit from the manual, you should be familiar with basic networking principles.

This manual is applicable for the AXIS OfficeBasic, with software release 6.00 or later.

## About Axis

Axis Communications is dedicated to providing innovative solutions for network-connected computer peripherals. Since the start in 1984, it has been one of the fastest growing companies in the market and is now a leader in its field.

**ThinServer™ Technology** - enables Axis' products to act as intelligent file server independent ThinServer devices. A ThinServer device is a network server which includes "thin" embedded server software capable of simultaneous multiprotocol communication, scalable RISC hardware and a built-in Web server which allows easy access and management via any standard Web browser. The ThinServer technology makes it possible to connect any electronic device to the network, thus providing "Access to everything".

Today, Axis Communications is offering six major ThinServer product lines consisting of:

**Network Print Servers** - offer a powerful and cost-efficient method for sharing printer resources in your network. They connect to any standard printer, featuring high performance, simple management and easy upgrading across the network. The print servers are available in Ethernet, Fast Ethernet and Token Ring versions.

**IBM Mainframe and S/3x - AS/400 Print Servers and Protocol Converters** - include a wide range of LAN, coax and twinax attached print servers for the IBM host environment. By emulating IBM devices, these servers provide conversion of the IPDS, SCS and 3270DS data streams to the major ASCII printer languages.

**Network Attached Optical Media Servers** - provide a flexible and cost-efficient solution for sharing CD-ROMs, DVD-ROMs and other optical media across the network. They are available in Ethernet, Fast Ethernet and Token Ring versions.

**Network Camera Servers** - provide live images using standard Internet technology, thus enabling access to live cameras via any standard Web browser. They offer a perfect solution for remote surveillance over the Internet; their sharp images can bring life into any web site. These servers support Ethernet as well as PSTN and GSM phone lines.

**Network Scan Servers** - enable easy distribution of paper-based information across workgroups and the enterprise. By sending scanned documents to your destination via the Internet/intranet, you will reduce your faxing/mailing costs, as well as save time, thus improving your organization's efficiency.

## Support services

Should you require any technical assistance, please contact your Axis dealer. If your questions cannot be answered immediately, your Axis dealer will forward your queries through the appropriate channels to ensure you a rapid response.

If you are connected to Internet, you can find on-line manuals, technical support, firmware updates, application software and company information on the addresses listed below.

WWW:	<a href="http://www.axis.com">http://www.axis.com</a>
FTP server:	<a href="ftp://ftp.axis.com/pub/axis">ftp://ftp.axis.com/pub/axis</a>

## Table of Contents

Section 1	<b>Product Overview</b> . . . . .	7
	Package Contents . . . . .	7
	AXIS OfficeBasic Physical Description . . . . .	8
	The AXIS OfficeBasic CD . . . . .	10
Section 2	<b>Installation Overview</b> . . . . .	11
Section 3	<b>Windows 95/98 - TCP/IP Printing</b> . . . . .	13
	Connecting a Printer to the Network . . . . .	14
	Installing AXIS Print System . . . . .	15
	Installing TCP/IP Printer Ports . . . . .	17
Section 4	<b>Windows 95/98 - NetBIOS/NetBEUI Printing</b> . . . . .	21
	Connecting a Printer to the Network . . . . .	22
	Installing AXIS Print Monitor . . . . .	23
	Installing NetBIOS/NetBEUI Printer Ports . . . . .	25
Section 5	<b>Windows NT4.0/2000 - TCP/IP Printing</b> . . . . .	27
	Connecting a Printer to the Network . . . . .	28
	Installing AXIS Print System . . . . .	29
	Installing TCP/IP Printer Ports . . . . .	31
Section 6	<b>Windows NT4.0/2000 - NetBIOS/NetBEUI Printing</b> . . . . .	35
	Connecting a Printer to the Network . . . . .	36
	Installing AXIS Print Monitor . . . . .	37
	Installing NetBIOS/NetBEUI Printer Ports . . . . .	39
Section 7	<b>Windows NT3.5x - TCP/IP Printing</b> . . . . .	41
	Connecting a Printer to the Network . . . . .	42
	Installing AXIS IP Installer . . . . .	43
	Installing AXIS Print Monitor . . . . .	44
	Installing TCP/IP Printer Ports . . . . .	46
Section 8	<b>Windows NT3.5x - NetBIOS/NetBEUI Printing</b> . . . . .	49
	Connecting a Printer to the Network . . . . .	50
	Installing AXIS Print Monitor . . . . .	51
	Installing NetBIOS/NetBEUI Printer Ports . . . . .	53

Section 9	Management & Configuration .....	55
	Using a Web browser .....	55
	Using the Test Button .....	61
Section 10	Upgrading the Software.....	63
Appendix A	Technical Specifications.....	65
Appendix B	Glossary .....	67
	Index.....	69

## Section I Product Overview

Based on the ThinServer technology, the AXIS OfficeBasic allows you to share your available printer resources on your network. You can connect your AXIS OfficeBasic directly to any standard printer without the need of additional cabling.

The AXIS OfficeBasic supports printing using the TCP/IP and NetBIOS/NetBEUI protocols from the following clients:

- Windows 95/98
- Windows NT 3.5x
- Windows NT 4.0
- Windows 2000

### Package Contents

Verify that nothing is missing from the print server package by using the check list below. Please contact your dealer if anything should be missing or damaged. All packing materials are recyclable.

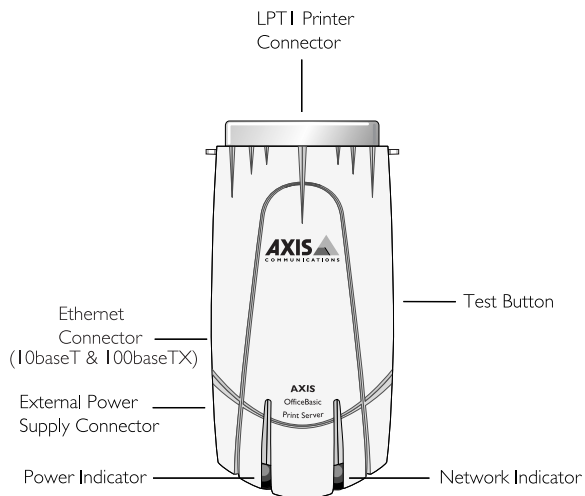
Hardware	Model	Part Numbers
Print Server	AXIS OfficeBasic	0107-001-01
Power Supply (PS-B)	Europe	13267
	UK	13268
	Australia	13269
	USA	13270
	Japan	13936
Media	Title	Part Numbers
CD	AXIS OfficeBasic CD	revision 1.0
Printed Materials	AXIS OfficeBasic User's Guide	16853



From your local dealer you can order optional accessories. The following items are available for the AXIS OfficeBasic:

Optional Accessories	Title	Part Numbers
Cables	Printer Cable extensions	13522
	Centronics to mini-Centronics cable	16453
Ribbons	Self-adhesive velcro ribbons	13282 & 13283

## AXIS OfficeBasic Physical Description



Plan view of the AXIS OfficeBasic

### Network Connectors

The AXIS OfficeBasic is designed for 10 Mbps Ethernet and 100 Mbps Fast Ethernet networks and connects to the network via a twisted pair category 5 cable (10baseT and 100baseTX) or better. The AXIS OfficeBasic is equipped with an autosensing function that detects the speed of the local network segment and varies the speed of its data communication accordingly, between 10 Mbps and 100 Mbps.

### Printer Port

The AXIS OfficeBasic print server is provided with a single high-speed IEEE 1284 compatible parallel port, that connects directly to any standard printer.

Centronics-to-Centronics and Centronics-to-mini Centronics extension cables may be obtained from your local distributor for use with printers physically unable to accommodate the AXIS OfficeBasic.

### Test Button

The test button is used for:

- Printing a test page to check the connection to the printer.
- Printing the parameter list showing all the AXIS OfficeBasic settings.
- Resetting the AXIS OfficeBasic parameters to the factory default settings.

Refer to *Using the Test Button*, on page 61, for more information about the test button.

### Network Indicator

The network indicator flashes to indicate network activity.

### Power Indicator

The power indicator is lit while power is applied. If it is not lit, or it flashes, there is a problem with the AXIS OfficeBasic or its power supply.

## The AXIS OfficeBasic CD

The AXIS OfficeBasic CD comprises all necessary AXIS OfficeBasic documentation and software. It is compatible for use within all of the supported Windows environments.

The CD interface is available in HTML format, but the documentation is in pdf format.

**Start-up procedures** The AXIS OfficeBasic CD starts automatically from a local CD drive on **Windows 95/98, NT and 2000** platforms.

You can also navigate to the CD root directory and click on the *index.html* file from within the Windows file manager.

**Note:**  If the Adobe Acrobat Reader 3.0 is not installed on to your system, you can download it from the AXIS OfficeBasic CD.

## Section 2 Installation Overview

In order for you to correctly install the AXIS OfficeBasic you must identify the Windows clients that you are using and define which printing protocol you want to use for printing.

The following table shows the Windows environments and the printing protocols that are supported by AXIS OfficeBasic. Follow the appropriate instructions below to install the AXIS OfficeBasic in your Windows environment:

Windows Client	Printing Protocol	Go to ...
<b>Windows 95/98</b>	TCP/IP	<i>Section 3 Windows 95/98 - TCP/IP Printing, on page 13</i>
	NetBIOS/NetBEUI	<i>Section 4 Windows 95/98 - NetBIOS/NetBEUI Printing, on page 21</i>
<b>Windows NT 4.0/ Windows 2000</b>	TCP/IP	<i>Section 5 Windows NT4.0/2000 - TCP/IP Printing, on page 27</i>
	NetBIOS/NetBEUI	<i>Section 6 Windows NT4.0/2000 - NetBIOS/NetBEUI Printing, on page 35</i>
<b>Windows NT 3.5x</b>	TCP/IP	<i>Section 7 Windows NT3.5x - TCP/IP Printing, on page 41</i>
	NetBIOS/NetBEUI	<i>Section 8 Windows NT3.5x - NetBIOS/NetBEUI Printing, on page 49</i>



## Section 3 Windows 95/98 - TCP/IP Printing

This section describes how to install the AXIS OfficeBasic for TCP/IP printing on Windows 95 and Windows 98 clients.

### Before you begin

- Make sure that the TCP/IP protocol is enabled on your Windows client.
- Note the serial number, found on the underside label of the AXIS OfficeBasic and write it down. You will need it during the installation.

### Installation Steps

To complete the installation you need to perform the following steps:

- Physically connecting the AXIS OfficeBasic to your network. Please refer to page 14.
- Installing the AXIS Print System software on your client. Please refer to page 15.
- Integrating the AXIS OfficeBasic in your network and installing TCP/IP printer ports on your client. Please refer to page 17.

## Connecting a Printer to the Network

Follow the instructions below to connect a printer to the network via the AXIS OfficeBasic print server.

- Caution!**
- Make sure that the AXIS OfficeBasic external power supply is marked with the correct voltage! Refer to *Package Contents*, on page 7.
1. Make sure that the printer is switched off and that the AXIS OfficeBasic external power supply is disconnected.
  2. Locate the serial number, found on the underside label of the AXIS OfficeBasic, and write it down. You will need this number later during the network configuration.
  3. Connect the AXIS OfficeBasic to the printer, either directly to the parallel printer port, or using the optional printer cable extension.
  4. Connect your AXIS OfficeBasic to the network using a twisted pair category 5 cable (10baseT and 100baseTX).
  5. Switch on the printer and connect the external power supply to the AXIS OfficeBasic. The power indicator lights. If the network indicator starts to flash, the AXIS OfficeBasic is successfully connected to the network.
  6. Press and release the test button on the AXIS OfficeBasic. If the printer and the AXIS OfficeBasic are correctly connected, the AXIS OfficeBasic internal test page will be printed.
- Notes:**
- The test page includes a list of the most important parameters, including the IP address and the firmware version number.
  - The AXIS OfficeBasic uses high speed Centronics Communication. For use with older printers not supporting high speed, this function can be disabled. Please refer to *Section 9 Management & Configuration*, on page 55, for more information.

## Installing AXIS Print System

AXIS Print System is a software utility tool that has been developed for TCP/IP printing in Windows 95, Windows 98, Windows NT 4.0 and Windows 2000 environments. It allows you to connect your Axis Network Print Servers in the same simple fashion as a local printer port. AXIS Print System supports peer-to-peer printing, which means that your print jobs are sent directly to the AXIS OfficeBasic.

AXIS Print System can be installed comprising the AXIS IP Installer which is an IP address setting tool.

### Peer-to-Peer Printing

The AXIS Print System needs to be installed on each workstation to perform peer-to-peer printing. Once installed, the AXIS Print System allows you to access all TCP/IP printers, just as if they were connected directly to your workstation. Peer-to-peer printing offers the following benefits:

- You can easily monitor the status of your printers
- You do not have to rely on a server.

### Client-Server Printing

AXIS Print System can also be used for client-server printing. In this case the printers you want to install must be configured to be shared in order for AXIS Print System to find them. Pop-up messages should not be enabled on the server, as they will not be displayed on the client platforms.



### Installing AXIS Print System on your client

Follow the instructions below to install AXIS Print System on your Windows client:

1. Insert the AXIS OfficeBasic CD in your CD-drive. When the AXIS OfficeBasic CD user interface has started, click the **Install Software** button.
2. Click the **TCP/IP printing** link that is located under the Windows 95/98/NT4.0/2000 header.
3. Select *AXIS Print System* and click the **Install** link. Save the *setup\_aps.exe* file and double-click it to start the AXIS Print System Installation Wizard. Click **Next>** when the installation starts.
4. Select **Printing and Installation of Print Servers**. This alternative installs the AXIS Print System comprising AXIS IP Installer.

**Note:**  If you are not a network administrator you should select the **Printing Only** option instead. This option only allows you to install already installed TCP/IP printers on your client.

Click **Next>**.

5. Click **Next>**.
6. Select the destination directory where AXIS Print System will be installed. If you want to change the recommended default directory, you should use the **Browse...** button to navigate to the desired directory. Click **Next>**.
7. Select the Start menu group. If you want to change the default value, you can select a group from the list or type a new group name in the appropriate field. Click **Next>**.
8. The last page of the installation lists all your selections. If you want to change any of your selections, just click the the **<Back** button until you reach the desired page. If you are satisfied with your selections, click **Install>** to finish the installation.

## Installing TCP/IP Printer Ports

The set of instructions you should use to install TCP/IP printers is determined by the IP address of your AXIS OfficeBasic.

If you have already assigned the AXIS OfficeBasic with a valid IP address, the AXIS OfficeBasic will appear in the Available Network Printers folder of the AXIS Print System. In that case you should proceed with the instructions presented in *Installing TCP/IP Printer Ports*, on page 19.

If not, you should proceed with the instructions presented below.

### Integrating the AXIS OfficeBasic and installing TCP/IP Printer Ports

Follow the instructions below to integrate the AXIS OfficeBasic in your network and to install a TCP/IP printer port on your Windows 95 or Windows 98 client:

1. Start AXIS Print System by selecting **AXIS Print System** from the **Start** menu.
2. AXIS Print System starts. Select **Search for newly connected print servers...** and click **Next>**.
3. Read the instructions and click **Next>**.
4. AXIS IP Installer opens. Click the serial number of the AXIS OfficeBasic that appears in the server list. Restart the AXIS OfficeBasic if it does not appear in the list.

- Notes:**
- The serial number is located on the underside label of the AXIS OfficeBasic.
  - If you have an active DHCP server in your network, you cannot set the IP address using AXIS IP Installer. Proceed instead with the instructions in *Installing TCP/IP Printer Ports*, on page 19.
5. Enter the desired IP address in the appropriate fields and click the **Set IP address** button.
  6. The AXIS IP Installer closes and the Installation Wizard starts. Select the port you want to install from the list and click **Next>**.

7. AXIS Print System searches your computer and the network for a location for a suitable printer driver. Click **Next>** if a printer driver is found. If not, you have to manually find a printer driver using the **Select** button before clicking the **Next>** button.
8. Enter a name for the printer, select if you want to make it your default printer and select if you want to produce a test page. Click **Finish**.

The printer is now installed on your computer. The printer will feature in the My Printers window of AXIS Print System as well as in the Printers folder of your Windows operating system.

If you want to change the default name or the password of the AXIS OfficeBasic, use the Configuration Wizard that is available from the User mode of the Web interface. Refer to *Using a Web browser*, on page 55.

### Installing TCP/IP Printer Ports

Follow the instructions below to install a TCP/IP printer port on your Windows 95 or Windows 98 client:

1. Start AXIS Print System by selecting **AXIS Print System** from the **Start** menu.
2. AXIS Print System starts. Select your desired printer from the **Available Networks Printers** window and click the **Add to My Printers** button. The Add Axis Printers Wizard starts.
3. AXIS Print System searches your computer and the network for a suitable printer driver. Click **Next>** if a printer driver is found. If not, you have to manually find a printer driver using the **Select** button before clicking the **Next>** button.
4. Enter a name for the printer, select if you want to make it your default printer and select if you want to produce a test page. Click **Finish**.

The printer is now installed on your computer. The printer will feature in the My Printers window of AXIS Print System as well as in the Printers folder of your Windows operating system.

If you want to change the default name or the password of the AXIS OfficeBasic, use the Configuration Wizard that is available from the User mode of the Web interface. Refer to *Using a Web browser*, on page 55.



## Section 4 Windows 95/98 - NetBIOS/NetBEUI Printing

This section describes how to install the AXIS OfficeBasic for NetBIOS/NetBEUI printing on Windows 95 and Windows 98 clients.

### Before you begin

- ❑ Make sure that the NetBIOS/NetBEUI protocol is enabled on your Windows client.
- ❑ Note the serial number, found on the underside label of the AXIS OfficeBasic and write it down. You will need it during the installation.

### Installation Steps

To complete the installation you need to perform the following steps:

- Physically connecting the AXIS OfficeBasic to your network. Please refer to page 22.
- Installing the AXIS Print Monitor software on your client. Please refer to page 23.
- Installing NetBIOS/NetBEUI printer ports on your client. Please refer to page 25.

## Connecting a Printer to the Network

Follow the instructions below to connect a printer to the network via the AXIS OfficeBasic print server.

- Caution!**
- Make sure that the AXIS OfficeBasic external power supply is marked with the correct voltage! Refer to *Package Contents*, on page 7.
1. Make sure that the printer is switched off and that the AXIS OfficeBasic external power supply is disconnected.
  2. Locate the serial number, found on the underside label of the AXIS OfficeBasic, and write it down. You will need this number later during the network configuration.
  3. Connect the AXIS OfficeBasic to the printer, either directly to the parallel printer port, or using the optional printer cable extension.
  4. Connect your AXIS OfficeBasic to the network using a twisted pair category 5 cable (10baseT and 100baseTX).
  5. Switch on the printer and connect the external power supply to the AXIS OfficeBasic. The power indicator lights. If the network indicator starts to flash, the AXIS OfficeBasic is successfully connected to the network.
  6. Press and release the test button on the AXIS OfficeBasic. If the printer and the AXIS OfficeBasic are correctly connected, the AXIS OfficeBasic internal test page will be printed.
- Notes:**
- The test page includes a list of the most important parameters, including the IP address and the firmware version number.
  - The AXIS OfficeBasic uses high speed Centronics Communication. For use with older printers not supporting high speed, this function can be disabled. Please refer to *Section 9 Management & Configuration*, on page 55, for more information.

## Installing AXIS Print Monitor

AXIS Print Monitor is a software utility tool that has been developed for NetBIOS/NetBEUI printing in Windows 95/98, Windows NT and Windows 2000 environments and for TCP/IP printing in Windows NT 3.5x environments. It allows you to connect your AXIS Network Print Servers in the same simple fashion as a local printer port. Once installed it is automatically initialized upon system startup. AXIS Print Monitor supports peer-to-peer printing, which means that your print jobs are sent directly to the AXIS OfficeBasic.

**Peer-to-Peer Printing** The AXIS Print Monitor needs to be installed on each workstation to perform peer-to-peer printing. Once installed, the AXIS Print Monitor allows you to access all network printers, just as if they were connected directly to your workstation. Peer-to-peer printing offers the following benefits:

- You can easily monitor the status of your printers, by enabling error condition pop-up messages.
- You do not have to rely on a server.

**Client-Server Printing** AXIS Print Monitor needs only to be installed on one server to perform client-server printing. The installed printers must be configured to be shared to allow clients to use them. Pop-up messages should not be enabled on the server as they will not be displayed on the client platforms.

**Important!**  As AXIS Print Monitor is an integral part of AXIS Print System, you should NOT install an independent version of the Print Monitor if AXIS Print System is already installed on your client.



### Installing AXIS Print Monitor on your client

Follow the instructions below to install AXIS Print Monitor on your Windows client:

1. Insert the AXIS OfficeBasic CD in your CD-drive. When the AXIS OfficeBasic CD user interface has started, click the **Install Software** button.
2. Click the **NetBIOS/NetBEUI printing** link that is located under the Windows 95/98/NT4.0/2000 header.
3. Select *AXIS Print Monitor* and click the **Install** link. Save the *Setup.exe* file and double-click it to start the AXIS Print Monitor Installation Wizard. Click **Next>** when the installation starts.
4. Select the destination directory where AXIS Print Monitor will be installed. If you want to change the recommended default directory, you should use the **Browse...** button to navigate to the desired directory. Click **Next>**.
5. Select the Start menu group. If you want to change the default value, you can select a group from the list or type a new group name in the appropriate field. Click **Next>**.
6. The last page of the installation lists all your selections. If you want to change any of your selections, just click the the **<Back** button until you reach the desired page. Click **Install>** to finish the installation.

## Installing NetBIOS/NetBEUI Printer Ports

Follow the procedures below to install Axis NetBIOS/NetBEUI printer ports on your Windows 95 or Windows 98 client:

1. To start the Add Printer Wizard, select **Settings - Printers** from the **Start** menu and double-click the **Add Printer** icon.
2. After clicking **Next>** in the first dialog, the Wizard asks you to select Local printer or Network printer. Select **Local printer** as the AXIS OfficeBasic emulates a local printer port. Click **Next>**.
3. Click the **Have Disk...** button. Insert the printer driver diskette/CD that was provided with your printer, select the appropriate diskette/CD drive and click **OK**.
4. Select the printer driver you want to install and click **Next>**.
5. Select the **AXIS Printer Port** from the Available Ports list. The port name appears as <name>.LP1, where <name> is AX followed by the last six digits of the AXIS OfficeBasic serial number, e.g. AX100086. Click the **Configure Port** button.
6. Choose whether error condition pop-up messages are to be displayed by checking the box in the Configure AXIS Printer Ports dialog. Define the frequency at which the error messages should be displayed after retry. Click **Next>**.
7. Enter an appropriate name for your printer and click **Next>**.
8. Choose whether you wish to produce a test page and click **Finish**.



## Section 5 Windows NT4.0/2000 - TCP/IP Printing

This section describes how to install the AXIS OfficeBasic for TCP/IP printing on Windows NT4.0 and Windows 2000 clients.

### Before you begin

- ❑ Make sure that the TCP/IP protocol is enabled on your Windows client.
- ❑ Note the serial number, found on the underside label of the AXIS OfficeBasic and write it down. You will need it during the installation.

### Installation Steps

To complete the installation you need to perform the following steps:

- Physically connecting the AXIS OfficeBasic to your network. Please refer to page 28.
- Installing the AXIS Print System software on your client. Please refer to page 29.
- Integrating the AXIS OfficeBasic in your network and installing TCP/IP printer ports on your client. Please refer to page 31.

## Connecting a Printer to the Network

Follow the instructions below to connect a printer to the network via the AXIS OfficeBasic print server.

- Caution!**
- Make sure that the AXIS OfficeBasic external power supply is marked with the correct voltage! Refer to *Package Contents*, on page 7.
1. Make sure that the printer is switched off and that the AXIS OfficeBasic external power supply is disconnected.
  2. Locate the serial number, found on the underside label of the AXIS OfficeBasic, and write it down. You will need this number later during the network configuration.
  3. Connect the AXIS OfficeBasic to the printer, either directly to the parallel printer port, or using the optional printer cable extension.
  4. Connect your AXIS OfficeBasic to the network using a twisted pair category 5 cable (10baseT and 100baseTX).
  5. Switch on the printer and connect the external power supply to the AXIS OfficeBasic. The power indicator lights. If the network indicator starts to flash, the AXIS OfficeBasic is successfully connected to the network.
  6. Press and release the test button on the AXIS OfficeBasic. If the printer and the AXIS OfficeBasic are correctly connected, the AXIS OfficeBasic internal test page will be printed.
- Notes:**
- The test page includes a list of the most important parameters, including the IP address and the firmware version number.
  - The AXIS OfficeBasic uses high speed Centronics Communication. For use with older printers not supporting high speed, this function can be disabled. Please refer to *Section 9 Management & Configuration*, on page 55, for more information.

## Installing AXIS Print System

AXIS Print System is a software utility tool that has been developed for TCP/IP printing in Windows 95, Windows 98, Windows NT 4.0 and Windows 2000 environments. It allows you to connect your Axis Network Print Servers in the same simple fashion as a local printer port. AXIS Print System supports peer-to-peer printing, which means that your print jobs are sent directly to the AXIS OfficeBasic.

AXIS Print System can be installed comprising the AXIS IP Installer which is an IP address setting tool.

### Peer-to-Peer Printing

The AXIS Print System needs to be installed on each workstation to perform peer-to-peer printing. Once installed, the AXIS Print System allows you to access all TCP/IP printers, just as if they were connected directly to your workstation. Peer-to-peer printing offers the following benefits:

- You can easily monitor the status of your printers
- You do not have to rely on a server.

### Client-Server Printing

AXIS Print System can also be used for client-server printing. In this case the printers you want to install must be configured to be shared in order for AXIS Print System to find them. Pop-up messages should not be enabled on the server, as they will not be displayed on the client platforms.

### Installing AXIS Print System on your client

Follow the instructions below to install AXIS Print System on your Windows client:

1. Insert the AXIS OfficeBasic CD in your CD-drive. When the AXIS OfficeBasic CD user interface has started, click the **Install Software** button.
2. Click the **TCP/IP printing** link that is located under the Windows 95/98/NT4.0/2000 header.
3. Select *AXIS Print System* and click the **Install** link. Save the *setup\_aps.exe* file and double-click it to start the AXIS Print System Installation Wizard. Click **Next>** when the installation starts.
4. Select **Printing and Installation of Print Servers**. This alternative installs the AXIS Print System comprising AXIS IP Installer.

**Note:**  If you are not a network administrator you should select the **Printing Only** option instead. This option only allows you to install already installed TCP/IP printers on your client.

Click **Next>**.

5. Click **Next>**.
6. Select the destination directory where AXIS Print System will be installed. If you want to change the recommended default directory, you should use the **Browse...** button to navigate to the desired directory. Click **Next>**.
7. Select the Start menu group. If you want to change the default value, you can select a group from the list or type a new group name in the appropriate field. Click **Next>**.
8. The last page of the installation lists all your selections. If you want to change any of your selections, just click the **<Back** button until you reach the desired page. If you are satisfied with your selections, click **Install>** to finish the installation.

## Installing TCP/IP Printer Ports

The set of instructions you should use to install TCP/IP printer ports is determined by the IP address of your AXIS OfficeBasic.

If you have already assigned the AXIS OfficeBasic with a valid IP address, the AXIS OfficeBasic will appear in the Available Network Printers folder of the AXIS Print System. In that case you should proceed with the instructions presented in *Installing TCP/IP Printer Ports*, on page 33.

If not, you should proceed with the instructions presented below.

### Integrating the AXIS OfficeBasic and installing TCP/IP Printer Ports

Follow the instructions below to integrate the AXIS OfficeBasic in your network and to install a TCP/IP printer port on your Windows NT 4.0 or Windows 2000 client:

1. Start AXIS Print System by selecting **AXIS Print System** from the **Start** menu.
2. AXIS Print System starts. Select **Search for newly connected print server...** and click **Next>**.
3. Read the instructions and click **Next>**.
4. AXIS IP Installer opens. Click the serial number of the AXIS OfficeBasic that appears in the server list. Restart the AXIS OfficeBasic if it does not appear in the list.

- Notes:**
- The serial number is located on the underside label of the AXIS OfficeBasic.
  - If you have an active DHCP server in your network, you cannot set the IP address using AXIS IP Installer. Proceed instead with the instructions in *Installing TCP/IP Printer Ports*, on page 33.
5. Enter the desired IP address in the appropriate fields and click the **Set IP address** button.
  6. The AXIS IP Installer closes and the Installation Wizard starts. Select the port you want to install from the list and click **Next>**.



7. AXIS Print System searches your computer and the network for a location for a suitable printer driver. Click **Next>** if a printer driver is found. If not, you have to manually find a printer driver using the **Select** button before clicking the **Next>** button.
8. Enter a name for the printer, select if you want to make it your default printer and select if you want to produce a test page. Click **Finish**.

The printer is now installed on your computer. The printer will feature in the My Printers window of AXIS Print System as well as in the Printers folder of your Windows operating system.

If you want to change the default name or the password of the AXIS OfficeBasic, use the Configuration Wizard that is available from the User mode of the Web interface. Refer to *Using a Web browser*, on page 55.

### Installing TCP/IP Printer Ports

Follow the instructions below to install an TCP/IP printer port on your Windows NT 4.0 or Windows 2000 client:

1. Start AXIS Print System by selecting **AXIS Print System** from the **Start** menu.
2. AXIS Print System starts. Select your desired printer from the **Available Networks Printers** window and click the **Add to My Printers** button. The Add Axis Printers Wizard starts.
3. AXIS Print System searches your computer and the network for a suitable printer driver. Click **Next>** if a printer driver is found. If not, you have to manually find a printer driver using the **Select** button before clicking the **Next>** button.
4. Enter a name for the printer, select if you want to make it your default printer and select if you want to produce a test page. Click **Finish**.

The printer is now installed on your computer. The printer will feature in the My Printers window of AXIS Print System as well as in the Printers folder of your Windows operating system.

If you want to change the default name or the password of the AXIS OfficeBasic, use the Configuration Wizard that is available from the User mode of the Web interface. Refer to *Using a Web browser*, on page 55.



## Section 6 Windows NT4.0/2000 - NetBIOS/NetBEUI Printing

This section describes how to install the AXIS OfficeBasic for NetBIOS/NetBEUI printing on Windows NT4.0 and Windows 2000 clients.

### Before you begin

- ❑ Make sure that the NetBIOS/NetBEUI protocol is enabled on your Windows client.
- ❑ Note the serial number, found on the underside label of the AXIS OfficeBasic and write it down. You will need it during the installation.

### Installation Steps

To complete the installation you need to perform the following steps:

- Physically connecting the AXIS OfficeBasic to your network. Please refer to page 36.
- Installing the AXIS Print Monitor software on your client. Please refer to page 37.
- Installing NetBIOS/NetBEUI printer ports on your client. Please refer to page 39.

## Connecting a Printer to the Network

Follow the instructions below to connect a printer to the network via the AXIS OfficeBasic print server.

- Caution!**
- Make sure that the AXIS OfficeBasic external power supply is marked with the correct voltage! Refer to *Package Contents*, on page 7.
1. Make sure that the printer is switched off and that the AXIS OfficeBasic external power supply is disconnected.
  2. Locate the serial number, found on the underside label of the AXIS OfficeBasic, and write it down. You will need this number later during the network configuration.
  3. Connect the AXIS OfficeBasic to the printer, either directly to the parallel printer port, or using the optional printer cable extension.
  4. Connect your AXIS OfficeBasic to the network using a twisted pair category 5 cable (10baseT and 100baseTX).
  5. Switch on the printer and connect the external power supply to the AXIS OfficeBasic. The power indicator lights. If the network indicator starts to flash, the AXIS OfficeBasic is successfully connected to the network.
  6. Press and release the test button on the AXIS OfficeBasic. If the printer and the AXIS OfficeBasic are correctly connected, the AXIS OfficeBasic internal test page will be printed.
- Notes:**
- The test page includes a list of the most important parameters, including the IP address and the firmware version number.
  - The AXIS OfficeBasic uses high speed Centronics Communication. For use with older printers not supporting high speed, this function can be disabled. Please refer to *Section 9 Management & Configuration*, on page 55, for more information.

## Installing AXIS Print Monitor

AXIS Print Monitor is a software utility tool that has been developed for NetBIOS/NetBEUI printing in Windows 95/98, Windows NT and Windows 2000 environments and for TCP/IP printing in Windows NT 3.5x environments. It allows you to connect your AXIS Network Print Servers in the same simple fashion as a local printer port. Once installed it is automatically initialized upon system startup. AXIS Print Monitor supports peer-to-peer printing, which means that your print jobs are sent directly to the AXIS OfficeBasic.

**Peer-to-Peer Printing** The AXIS Print Monitor needs to be installed on each workstation to perform peer-to-peer printing. Once installed, the AXIS Print Monitor allows you to access all network printers, just as if they were connected directly to your workstation. Peer-to-peer printing offers the following benefits:

- You can easily monitor the status of your printers, by enabling error condition pop-up messages.
- You do not have to rely on a server.

**Client-Server Printing** AXIS Print Monitor needs only to be installed on one server to perform client-server printing. The installed printers must be configured to be shared to allow clients to use them. Pop-up messages should not be enabled on the server as they will not be displayed on the client platforms.

**Important!**  As AXIS Print Monitor is an integral part of AXIS Print System, you should NOT install an independent version of the Print Monitor if AXIS Print System is already installed on your client.

### Installing AXIS Print Monitor on your client

Follow the instructions below to install AXIS Print Monitor on your Windows client:

1. Insert the AXIS OfficeBasic CD in your CD-drive. When the AXIS OfficeBasic CD user interface has started, click the **Install Software** button.
2. Click the **NetBIOS/NetBEUI printing** link that is located under the Windows 95/98/NT4.0/2000 header.
3. Select *AXIS Print Monitor* and click the **Install** link. Save the *Setup.exe* file and double-click it to start the AXIS Print Monitor Installation Wizard. Click **Next>** when the installation starts.
4. Select the destination directory where AXIS Print Monitor will be installed. If you want to change the recommended default directory, you should use the **Browse...** button to navigate to the desired directory. Click **Next>**.
5. Select the Start menu group. If you want to change the default value, you can select a group from the list or type a new group name in the appropriate field. Click **Next>**.
6. The last page of the installation lists all your selections. If you want to change any of your selections, just click the the **<Back** button until you reach the desired page. Click **Install>** to finish the installation.

## Installing NetBIOS/NetBEUI Printer Ports

Follow the procedure below to install NetBIOS/NetBEUI printer ports on your Windows NT 4.0 or Windows 2000 workstation:

1. To start the Add Printer Wizard, select **Settings - Printers** from the **Start** menu and double-click the **Add Printer** icon.
2. *Windows 2000 only:* Start the installation by clicking **Next>**.
3. Select the **My Computer** option and click **Next>**.
4. Click **Add Port...** in the Available ports dialog, select **AXIS Port** and click **New Port...**
5. Select **NetBIOS/NetBEUI** as your choice of network protocol and click **OK**.
6. Select the **AXIS Port** you want to add. The port appears as <name>.LP1, where <name> is AX followed by the last six digits of the **AXIS OfficeBasic** serial number, e.g. AX100086. Click **OK**.
7. Close the **Printer Ports** window.
8. Click the **Configure Port...** button. Choose whether error condition pop-up messages are to be displayed by checking the box in the **Configure Axis Ports** dialog. Define the frequency at which the error messages should be displayed after retry. Click **OK**. Continue the installation by clicking **Next>**.
9. Click the **Have Disk...** button. Insert the printer driver diskette/CD that was provided with your printer, select the appropriate diskette/CD drive and click **OK**.
10. Select the printer driver you want to install and click **Next>**.
11. Enter an appropriate name for your printer and click **Next>**.
12. Choose whether you want to share the printer with other network users and click **Next>**.
13. Choose whether you want to produce a test page and then click **Finish**.





## Section 7 Windows NT3.5x - TCP/IP Printing

This section describes how to install the AXIS OfficeBasic for TCP/IP printing on Windows NT3.5x clients.

### Before you begin

- ❑ Make sure that the TCP/IP protocol is enabled on your Windows client.
- ❑ Note the serial number, found on the underside label of the AXIS OfficeBasic and write it down. You will need it during the installation.

### Installation Steps

To complete the installation you need to perform the following steps:

- Physically connecting the AXIS OfficeBasic to your network. Please refer to page 42.
- Installing the AXIS IP Installer software on your client. Please refer to page 43
- Installing the AXIS Print Monitor software on your client. Please refer to page 44.
- Integrating the AXIS OfficeBasic in your network and installing the TCP/IP printer ports on your client. Please refer to page 46.

## Connecting a Printer to the Network

Follow the instructions below to connect a printer to the network via the AXIS OfficeBasic print server.

- Caution!**
- Make sure that the AXIS OfficeBasic external power supply is marked with the correct voltage! Refer to *Package Contents*, on page 7.
1. Make sure that the printer is switched off and that the AXIS OfficeBasic external power supply is disconnected.
  2. Locate the serial number, found on the underside label of the AXIS OfficeBasic, and write it down. You will need this number later during the network configuration.
  3. Connect the AXIS OfficeBasic to the printer, either directly to the parallel printer port, or using the optional printer cable extension.
  4. Connect your AXIS OfficeBasic to the network using a twisted pair category 5 cable (10baseT and 100baseTX).
  5. Switch on the printer and connect the external power supply to the AXIS OfficeBasic. The power indicator lights. If the network indicator starts to flash, the AXIS OfficeBasic is successfully connected to the network.
  6. Press and release the test button on the AXIS OfficeBasic. If the printer and the AXIS OfficeBasic are correctly connected, the AXIS OfficeBasic internal test page will be printed.
- Notes:**
- The test page includes a list of the most important parameters, including the IP address and the firmware version number.
  - The AXIS OfficeBasic uses high speed Centronics Communication. For use with older printers not supporting high speed, this function can be disabled. Please refer to *Section 9 Management & Configuration*, on page 55, for more information.

## Installing AXIS IP Installer

The AXIS IP Installer is a software utility that allows you to set the IP address of your AXIS OfficeBasic from a Windows NT3.5x client.

Follow the instructions below to install the AXIS IP Installer on your client:

1. Insert the AXIS OfficeBasic CD in your CD-drive. When the AXIS OfficeBasic CD user interface has started, click the **Install Software** button.
2. Click the **TCP/IP printing** link that is located under the Windows NT3.5x header.
3. Select *AXIS IP Installer* and click the **Install** link. Save the *Setup\_IPInstaller.exe* file and double-click it to start the AXIS IP Installer Installation Wizard. Click **Next>** when the installation starts.
4. Click **Next>**.
5. Select the destination directory where AXIS IP Installer will be installed. If you want to change the recommended default directory, you should use the **Browse...** button to navigate to the desired directory. Click **Next>**.
6. Select the Start menu group. If you want to change the default value, you can select a group from the list or type a new group name in the appropriate field. Click **Next>**.
7. The last page of the installation lists all your selections. If you want to change any of your selections, just click the the **<Back** button until you reach the desired page. Click **Finish>** to finish the installation.

## Installing AXIS Print Monitor

AXIS Print Monitor is a software utility tool that has been developed for TCP/IP printing in Windows NT 3.5x environments and for NetBIOS/NetBEUI printing in Windows 95/98, Windows NT and Windows 2000 environments. It allows you to connect you AXIS Network Print Servers in the same simple fashion as a local printer port. Once installed it is automatically initialized upon system startup. AXIS Print Monitor supports peer-to-peer printing, which means that your print jobs are sent directly to the AXIS OfficeBasic.

**Peer-to-Peer Printing** The AXIS Print Monitor needs to be installed on each workstation to perform peer-to-peer printing. Once installed, the AXIS Print Monitor allows you to access all network printers, just as if they were connected directly to your workstation. Peer-to-peer printing offers the following benefits:

- You can easily monitor the status of your printers, by enabling error condition pop-up messages.
- You do not have to rely on a server.

**Client-Server Printing** AXIS Print Monitor needs only to be installed on one server to perform client-server printing. The installed printers must be configured to be shared to allow clients to use them. Pop-up messages should not be enabled on the server as they will not be displayed on the client platforms.

**Installing  
AXIS Print Monitor  
on your client**

---

Follow the instructions below to install AXIS Print Monitor on your Windows client:

1. Insert the AXIS OfficeBasic CD in your CD-drive. When the AXIS OfficeBasic CD user interface has started, click the **Install Software** button.
2. Click the **TCP/IP printing** link that is located under the Windows NT 3.5x header.
3. Select *AXIS Print Monitor* and click the **Install** link. Save the *Setup.exe* file and double-click it to start the AXIS Print Monitor Installation Wizard. Click **Next>** when the installation starts.
4. Select the destination directory where AXIS Print Monitor will be installed. If you want to change the recommended default directory, you should use the **Browse...** button to navigate to the desired directory. Click **Next>**.
5. Select the Start menu group. If you want to change the default value, you can select a group from the list or type a new group name in the appropriate field. Click **Next>**.
6. The last page of the installation lists all your selections. If you want to change any of your selections, just click the the **<Back** button until you reach the desired page. Click **Install>** to finish the installation.

## Installing TCP/IP Printer Ports

Follow the instructions below to integrate the AXIS OfficeBasic in your network and to install TCP/IP printer ports on your Windows NT 3.5x clients:

- Important!**  If you have already assigned an IP address to your AXIS OfficeBasic, proceed with step 6 in the instructions below.
1. Start AXIS IP Installer.
  2. Click the serial number of your AXIS OfficeBasic when it appears in the server list. Restart the AXIS OfficeBasic, if it does not show up in the server list.
  3. Enter an unused IP address in the designated IP address field and click the **Set IP address** button.
  4. The IP setting process will take approximately 10 to 40 seconds. Click **OK** in the confirmation box that appears when the IP address has been set.
  5. Close the AXIS IP Installer.
  6. Open the Windows NT 3.5x Print Manager and select **Create Printer** from the **Printer** menu.
  7. Enter an appropriate name in the Printer Name field.
  8. Select **Other...** in the driver list. Insert the printer driver diskette/CD that was provided with your printer, select the diskette/CD drive and click **OK**.
  9. Select the printer driver you want to install.
  10. Select **Other...** from the "Print to" drop-down list.
  11. Select **AXIS Port** from the list of available Print Monitors in the Print Destination dialog. Click **OK**.
  12. Select **LPR (TCP/IP)** as your choice of network protocol and click **OK**.

13. From the Add LPR port dialog, enter the IP address or host name of your print server and define a printer name. Click **OK** to return to the Create Printer dialog.
14. Select the AXIS LPR port you wish to use from the “Print to” drop-down list. The port appears as <port name>@<IP address> or <port name>@<host name>, e.g. LPT1@192.36.254.101.
15. Click the **Settings** button. Choose whether error condition pop-up messages are to be displayed by checking the box in the Configure AXIS LPR Ports dialog. Define the frequency at which the error messages should be displayed after retry. Click **OK** to return to the Create Printer dialog.
16. Having selected and configured the chosen port, click **Next>**.
17. Select whether you want to share the printer with other network users. Click **OK**.

The printer properties are displayed in an appropriate dialog that allows you to refine your printer setup.

The Axis printer is now installed and will appear as an icon in the Print Manager.





## Section 8 Windows NT3.5x - NetBIOS/NetBEUI Printing

This section describes how to install the AXIS OfficeBasic for NetBIOS/NetBEUI printing on Windows NT 3.5x clients.

### Before you begin

- Make sure that the NetBIOS/NetBEUI protocol is enabled on your Windows client.
- Note the serial number, found on the underside label of the AXIS OfficeBasic and write it down. You will need it during the installation.

### Installation Steps

To complete the installation you need to perform the following steps:

- Physically connecting the AXIS OfficeBasic to your network. Please refer to page 50.
- Installing the AXIS Print Monitor software on your client. Please refer to page 51.
- Installing the NetBIOS/NetBEUI printer ports on your client. Please refer to page 53.

## Connecting a Printer to the Network

Follow the instructions below to connect a printer to the network via the AXIS OfficeBasic print server.

- Caution!**
- Make sure that the AXIS OfficeBasic external power supply is marked with the correct voltage! Refer to *Package Contents*, on page 7.
1. Make sure that the printer is switched off and that the AXIS OfficeBasic external power supply is disconnected.
  2. Locate the serial number, found on the underside label of the AXIS OfficeBasic, and write it down. You will need this number later during the network configuration.
  3. Connect the AXIS OfficeBasic to the printer, either directly to the parallel printer port, or using the optional printer cable extension.
  4. Connect your AXIS OfficeBasic to the network using a twisted pair category 5 cable (10baseT and 100baseTX).
  5. Switch on the printer and connect the external power supply to the AXIS OfficeBasic. The power indicator lights. If the network indicator starts to flash, the AXIS OfficeBasic is successfully connected to the network.
  6. Press and release the test button on the AXIS OfficeBasic. If the printer and the AXIS OfficeBasic are correctly connected, the AXIS OfficeBasic internal test page will be printed.
- Notes:**
- The test page includes a list of the most important parameters, including the IP address and the firmware version number.
  - The AXIS OfficeBasic uses high speed Centronics Communication. For use with older printers not supporting high speed, this function can be disabled. Please refer to *Section 9 Management & Configuration*, on page 55, for more information.

## Installing AXIS Print Monitor

AXIS Print Monitor is a software utility tool that has been developed for NetBIOS/NetBEUI printing in Windows 95/98, Windows NT and Windows 2000 environments and for TCP/IP printing in Windows NT 3.5x environments. It allows you to connect your AXIS Network Print Servers in the same simple fashion as a local printer port. Once installed it is automatically initialized upon system startup. AXIS Print Monitor supports peer-to-peer printing, which means that your print jobs are sent directly to the AXIS OfficeBasic.

**Peer-to-Peer Printing** The AXIS Print Monitor needs to be installed on each workstation to perform peer-to-peer printing. Once installed, the AXIS Print Monitor allows you to access all network printers, just as if they were connected directly to your workstation. Peer-to-peer printing offers the following benefits:

- You can easily monitor the status of your printers, by enabling error condition pop-up messages.
- You do not have to rely on a server.

**Client-Server Printing** AXIS Print Monitor needs only to be installed on one server to perform client-server printing. The installed printers must be configured to be shared to allow clients to use them. Pop-up messages should not be enabled on the server as they will not be displayed on the client platforms.

**Installing  
AXIS Print Monitor  
on your client**

---

Follow the instructions below to install AXIS Print Monitor on your Windows client:

1. Insert the AXIS OfficeBasic CD in your CD-drive. When the AXIS OfficeBasic CD user interface has started, click the **Install Software** button.
2. Click the **NetBIOS/NetBEUI printing** link that is located under the Windows NT 3.5x header.
3. Select *AXIS Print Monitor* and click the **Install** link. Save the *Setup.exe* file and double-click it to start the AXIS Print Monitor Installation Wizard. Click **Next>** when the installation starts.
4. Select the destination directory where AXIS Print Monitor will be installed. If you want to change the recommended default directory, you should use the **Browse...** button to navigate to the desired directory. Click **Next>**.
5. Select the Start menu group. If you want to change the default value, you can select a group from the list or type a new group name in the appropriate field. Click **Next>**.
6. The last page of the installation lists all your selections. If you want to change any of your selections, just click the the **<Back** button until you reach the desired page. Click **Install>** to finish the installation.

## Installing NetBIOS/NetBEUI Printer Ports

Follow the procedure below to install Axis printer ports from a Windows NT 3.5x workstation:

1. Open the Print Manager and select **Create Printer** from the **Printer** menu.
2. Enter an appropriate name in the Printer Name field.
3. Select **Other...** in the driver list. Insert the printer driver diskette/CD that was provided with your printer, select the appropriate diskette/CD drive and click **OK**.
4. Select the printer driver you want to install.
5. Select **Other...** in the "Print to" list box.
6. Select **Axis Port** from the list of available Print Monitors and click **OK**.
7. Select the AXIS Port you wish to add and then click **OK**. The port appears as <name>.LP1, where <name> is AX followed by the last six digits of the AXIS OfficeBasic serial number, e.g. AX100086.
8. Click on **Settings**. Choose whether error condition pop-up messages are to be displayed by checking the box in the Configure Axis Ports dialog. Click **OK**.
9. Click **OK**.



## Section 9 Management & Configuration

The following section describes how you can manage and configure the AXIS OfficeBasic. The available management and configurations operations can be performed by:

- using a standard Java compatible Web browser
- using the Test Button

### Using a Web browser

Once you have established the AXIS OfficeBasic in the TCP/IP environment, you are free to access the AXIS OfficeBasic Web pages from any Java enabled Web browser.

The Web interface of the AXIS OfficeBasic is divided into two modes of operation, User mode and Admin mode.

**User** In User mode, you have no rights to change any parameter settings. However, if you have access rights to the Admin mode, you can change some of the basic parameters from User mode via the Configuration Wizard. This mode is intended for regular users who are only interested in using the print server's interface for checking print jobs or viewing printer properties. If you want to change any other of the print server's settings, you must enter the Admin mode.

**Admin** When in Admin mode, you have access to all the print server's parameters and you can change them to your liking. This mode is intended for network administrators and is password protected to prevent unauthorized changing of the print server parameters.

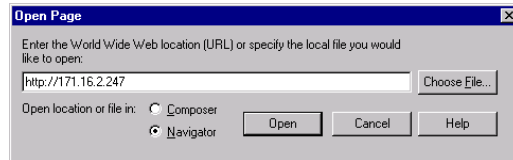
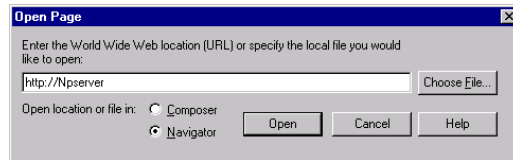
**Note:**  If the ROOT\_PWD parameter is set to *pass*, which is the default value, all users have access to the User mode as well as the Admin mode.



### Accessing the Web Pages

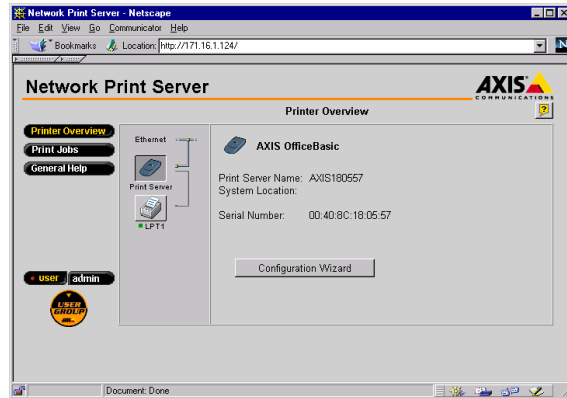
Follow the steps below to access the internal home page of the AXIS OfficeBasic. The browser used in the following example is Netscape Navigator 4.3.

1. Start your Web browser.
2. From the **File** menu, select **Open Page...**
3. Type the host name or the IP address of your AXIS OfficeBasic in the Open Page dialog, as detailed below:



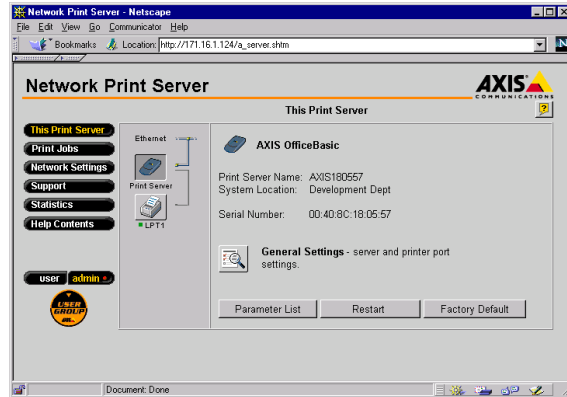
You can alternatively type the host name or the IP address directly into the Web browser's Location text field.

The User Mode home page of your AXIS OfficeBasic appears in the browser window.



The AXIS OfficeBasic User Home Page

Click the Admin button to enter the Admin mode. If the management password is changed from the default password `pass`, you will be prompted to enter user id and Password. Enter `root` as the user id and enter your new password as the password. If you have not changed the default password, you will not be prompted for user id and password and all user have access to the Admin mode.



The AXIS OfficeBasic Administrator Home Page

### Available Services from the User Mode

The following services are available from the User mode. An additional link to the Axis home page is available from this mode.

#### **Printer Overview**

The **Printer Overview** page contains a section that allows you to view the general parameter setting of the AXIS OfficeBasic, including the print server name and the location of the print server in your organization, if defined.

If you have admin access rights you can use the Configuration Wizard to perform basic configuration of the AXIS OfficeBasic.

By clicking the printer icon, a printer page opens, allowing you to view the status and the supported capabilities of the connected printer. The extent of this information is depending on the printer model. From the printer page, you can also print a test page to the printer.

**Print Jobs**

From the **Print Jobs** page you can view the status of the current print job, including the number of printed bytes and the origin of the print job. You can also view a log of the 20 latest print jobs that includes the user, the printing protocol and the file size. A log that displays the accumulated usage of the connected printer allows you to control the usage of the connected printers.

**General Help**

The **General Help** page presents you with basic information about the AXIS OfficeBasic and the Web user interface. A short description of the Axis installation tools you should use when installing a printer on your PC, is also included.

**Available Services  
from the Admin Mode**

The following services are available from the Admin mode. An additional link to the Axis home page is available from this mode.

**This Print Server**

The **This Print Server** page contains a section that allows you to view and modify the general parameter settings of the AXIS OfficeBasic, including the print server name, the node address, the password and the base URL. Management operations, like restarting the AXIS OfficeBasic and resetting its parameters to the factory default settings, are also available.

By clicking the printer icon, a printer page opens, allowing you to view the status and the supported capabilities of the connected printer. The extent of this information is depending on the printer model. From the printer page, you can also print a test page to the printer.

**Print Jobs**

From the **Print Jobs** page you can view the status of the current print job, including the number of printed bytes and the origin of the print job. You can also view a log of the 20 latest print jobs that includes the user, the printing protocol and the file size. A log that displays the accumulated usage of the connected printer allows you to control the usage of the connected printers. If you want to delete an ongoing print job, a delete button is available on this page.

**Network Settings**

From the **Network Settings** page you can set the parameters that control the network traffic to and from the AXIS OfficeBasic. You can enable or disable any of the supported network protocols and fine-tune the parameter settings.

**Caution!**

- Any network configuration should involve the Network Administrator.

**Support**

From the **Support** page you can receive help to resolve any installation or print problems that might occur. If your problems persist, the Support page allows you to produce a Server Report. The Server Report includes the settings of the AXIS OfficeBasic, information about your connected printers as well as the current network settings. The Server Report is of great value for support assistance, so please mail, email or fax it to your support channel together with a detailed problem description.

**Statistics**

The **Statistics** page displays information about the network traffic to and from the AXIS OfficeBasic as well as information about servers and services that are connected or associated with the AXIS OfficeBasic.

**Help Contents**

The **Help Contents** displays a comprehensive description of the configuration and management activities that can be performed from the internal Web pages of the AXIS OfficeBasic. These activities include instructions on how to install the AXIS OfficeBasic in various environments and how to upgrade it with new firmware. A detailed index is also available.

## Using the Test Button

The test button is located on the front right hand side of the AXIS OfficeBasic and is used for:

- Printing a test page, checking the connection to the printer.
- Printing a parameter list, showing the AXIS OfficeBasic current settings.
- Resetting the AXIS OfficeBasic parameters to the factory default settings.

### The Test Page

Press the test button once to print a test page. If the test page prints, the parallel interface is functioning correctly. The printed test page contains basic information about the AXIS OfficeBasic. It is recommended that you print a test page every time you have connected the AXIS OfficeBasic to a printer.

### The Parameter List

Press the test button twice to print a parameter list showing the current AXIS OfficeBasic settings. This list provides comprehensive details of all the parameters and their current status. Refer to *Appendix A - The Parameter List*, on page 65.

If you want to change any of the parameters, use one of the methods that are described in *Using a Web browser*, on page 55.

### Factory Default Settings

Follow the instructions below to reset the AXIS OfficeBasic to the factory default settings:

1. Remove the external power supply to switch off the AXIS OfficeBasic.
2. Press and hold down the test button, while you plug the external power supply back in. Continue to hold down the test button, until the network indicator begins to flash at one second intervals. This should take at least 5 seconds.
3. Release the test button and wait until the network indicator flashes at least five times.
4. Press and hold the test button again until the network indicator remains constantly lit.
5. Restart the AXIS OfficeBasic by switching it off and on.

The AXIS OfficeBasic is now reset to factory default settings.

- Note:**  The IP address will not change when you perform a factory default.

## Section 10 Upgrading the Software

When new firmware becomes available, you can upgrade the AXIS OfficeBasic Flash memory using the File Transfer Protocol (FTP) via TCP/IP.

To upgrade over the network using FTP you will need the file with the new print server software. The name of this file is in the form `product_version.bin`, e.g. `office_6xx.bin` for software release 6.xx.

- Note:**  As the upgrading process is performed via TCP/IP, a valid IP address must be assigned to the AXIS OfficeBasic.

### Obtaining the Updated firmware

You can obtain the updated firmware as well as updated versions of the client utility software from the following locations:

- AXIS OfficeBasic CD
- Over the Internet, by accessing the AXIS home page at <http://www.axis.com>
- Anonymous ftp, by logging in to <ftp.axis.com> and accessing the folder `/pub/axis/`
- your local dealer



### Upgrading the AXIS OfficeBasic

Follow the instructions below to upgrade the AXIS OfficeBasic flash memory with an updated firmware version:

1. Log in to the AXIS OfficeBasic with the command:  
`ftp <host name>`, or `ftp <IP address>`
2. You will be prompted for user id and password. Use the user id `root`, which has the default password `pass`.
3. Type the command `binary` to change to binary transfer mode.
4. Type the command `put <software name> flash`, where `<software name>` is the name of the new print server software, e.g. `office_6xx.bin`
5. Wait for the Flash loading operation to finish. This normally takes 1 to 4 minutes. The unit automatically restarts with the new print server software.
6. Log out using the command `quit`, `bye` or `exit` depending on your FTP version.

- Notes:**
- If the upgrading process fails, just repeat the instructions presented above.
  - If you lose contact with the AXIS OfficeBasic after an upgrade failure, just restart the AXIS OfficeBasic to restore contact.
  - Should the network diode flash at half a second intervals, the AXIS OfficeBasic cannot process any print jobs. In order to leave this state, you must repeat the instructions presented above.

# Appendix A Technical Specifications

## Supported Systems

Microsoft Windows: Windows NT ver. 3.5 and above, Windows 2000, Windows 95, Windows 98.

Print Methods: Raw TCP/IP, LPD, NetBIOS/NetBEUI.

WWW: Netscape Navigator 3.0 and higher and MS Internet Explorer 3.0 and higher.

**Hardware** 32 bit 100 MHz RISC Controller, 1 Mbyte Flash memory. 512 kbytes RAM.

**Logical Connection** NWay support to provide auto-detection of the network speed. Running simultaneously any combination of the supported protocols. Use of IEEE802.2, IEEE802.3, SNAP and Ethernet II frame types simultaneously.

**Attachments** RJ-45 connector (Category 5 Unshielded Twisted Pair) for 10baseT Ethernet and 100baseTX Fast Ethernet.

**Parallel Printer** One IEEE 1284 compliant high-speed parallel port, 36-pin Centronics connector. Sustained throughput over 1 Mbyte/s using NetWare. Bi-directional support for Reverse Telnet. ECP support.

**Front Panel** 2 LED indicators: Power and Network.  
Test button for information printouts.

**Power Consumption** Power provided by external supply:  
Maximum 200 mA at 12 VDC. (Type PS-B, 12V, 500 mA).

**Dimensions** Height x Width x Depth  
0.9 x 2.4 x 4.8 inches (2.4 x 6.1 x 12.1 cm)

**Weight** 0.22 lb. (0.1 kg)

**Environmental** Temperature: 40 - 105° F (5 - 40° C).  
Humidity: 10 - 95% non-condensing.

**Approvals**

EMC: EN 55022/1994, EN50082-1/1992. FCC Class A.

Safety: EN 60950.



All specifications are subject to change without prior notice

## Appendix B Glossary

- config* file This is a file that resides in the print server's memory and contains all the parameters that determine the AXIS OfficeBasic functionality. By editing the *config* file (changing the parameter settings), you can configure the AXIS OfficeBasic to meet the printing needs of your network.
- DNS Domain Name Service. Reflects the server names and addresses within a network.
- Flash Memory** The print server software is stored in Flash Memory. This memory is provided by a silicon chip that like any other ROM device, retains data content even after power is removed. However, Flash Memory is unique because it allows its data to be erased and re-written. This means that you can install software updates for your server as soon as they become available, without having to replace any parts. The new software is simply loaded into the server over the network.
- FTP File Transfer Protocol. A TCP/IP protocol used for logging in to network servers and for transferring files.
- HTML Hypertext Markup Language. A standard hypertext language used for creating World Wide Web pages and other hypertext documents.
- HTTP Hypertext Transfer Protocol. The TCP/IP protocol for Web based communication.
- IP Internet Protocol. The TCP/IP session-layer protocol that regulates packet forwarding by tracking IP addresses, routing outgoing messages and recognizing incoming messages.
- LED Light Emitting Diode.
- RISC Reduced Instruction Set Computing. A processor that recognizes only a limited number of assembly-language instructions.

- TCP** Transmission Control Protocol. The connection-oriented, transport-level protocol used in the TCP/IP suite of protocols.
- URL** Uniform Resource Locator. A way of specifying the location of publicly available information on the Internet.
- Wizard** A special form of user assistance that automates a task through a dialog with the user. Wizards help the user to accomplish tasks that are complex and require experience, and even for the experienced user can help to speed up an operation.

# Index

## A

- AXIS IP Installer
  - Windows NT3.5x 43
- AXIS OfficeBasic CD 10
- AXIS Print Monitor
  - Windows 95/98 23
  - Windows NT3.5x 44, 51
  - Windows NT4.0/2000 37
- AXIS Print System
  - Windows 95/98 15
  - Windows NT4.0/2000 29

## C

- Configuration methods
  - Web browser 56

## D

- Documentation 10

## F

- Factory default settings 62

## I

- Installation overview 11
- Installing AXIS IP Installer
  - Windows NT3.5x 43
- Installing AXIS Print Monitor
  - Windows 95/98 24
  - Windows NT3.5x 45, 52
  - Windows NT4.0/2000 38
- Installing AXIS Print System
  - Windows 95/98 16
  - Windows NT4.0/2000 30

## N

- NetBIOS/NetBEUI printers
  - Windows 95/98 25
  - Windows NT3.5x 53
  - WindowsNT4.0/2000 39
- Network connectors 9
- Network indicator LED 9

## O

- Obtaining Updated Firmware 63

## P

- Physical description 8
- Power indicator LED 9
- Printer port 9
- Printing
  - parameter list 61
  - Test page 61

## S

- Software 10
- Support services 4

## T

- TCP/IP printers
  - Windows 95/98 17
  - Windows NT3.5x 46
  - Windows NT4.0/2000 31
- Test button 9, 61

## U

- Upgrading the AXIS OfficeBasic 64

## W

- Web Browser 55

## Web Interface

Accessing the Web Pages 56

Administrator Mode 59

User Mode 58

## Windows 95/98

AXIS Print Monitor 23

AXIS Print System 15

Installing AXIS Print Monitor 24

Installing AXIS Print System 16

NetBIOS/NetBEUI printers 25

TCP/IP printers 17

## Windows NT3.5x

AXIS IP Installer 43

AXIS Print Monitor 44, 51

Installing AXIS IP Installer 43

Installing AXIS Print Monitor 45, 52

NetBIOS/NetBEUI printers 53

TCP/IP printers 46

## Windows NT4.0/2000

AXIS Print Monitor 37

AXIS Print System 29

Installing AXIS Print Monitor 38

Installing AXIS Print System 30

NetBIOS/NetBEUI printers 39

TCP/IP printers 31