

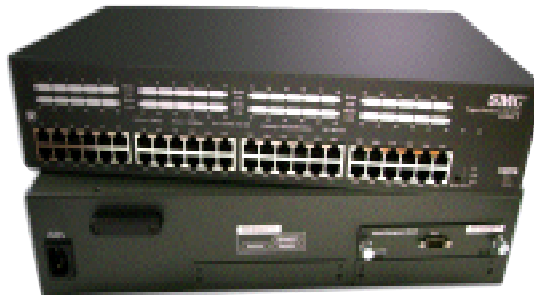
Switches/Hubs

# TigerSwitch™ 10/100

48-Port 10/100 Mbps Standalone Managed

Layer 2 Switch

Model Number: SMC6948L2



The TigerSwitch 10/100 is a 48-port 10/100 Mbps standalone managed switch and offers the highest port density available in its category. It is intended for corporate workgroup applications where a high-speed Gigabit Ethernet connection to the corporate backbone is required. The switch provides two optional Gigabit uplink modules, integrated SNMP/RMON management, port-based VLANs, Quality-of-Service (QoS), and port trunking.

Spanning Tree support, redundant management and optional redundant power provide network flexibility and serve to lower the cost of ownership. SNMP, RMON and a full-featured Web-based interface enable the user to monitor network performance and status.

## Benefits

### Features

- High-port density with Gigabit and Fiber options
- Priority Queuing
- VLAN with GVRP
- IGMP Snooping
- Port Trunking
- Port Mirroring
- Redundant power supply
- Switch provides 48 10/100 Mbps ports; 2 expansion slots for optional uplink modules

### Benefits

- Supports up to 48 10/100 Mbps, 2 1000 Mbps ports or 4 100FX ports - the ultimate in flexibility for future expansion
- Two levels of priority, with weighted fair queuing, ensures smooth transmission of vital data
- Supports VLANs based on frame tags or ports, plus support for automatic GVRP LAN registration for maximum security and bandwidth efficiency
- IGMP Snooping allows Multicast traffic transmission to registered users only
- Port trunking groups links between switches; increases bandwidth for dedicated link
- Port mirroring allows Sniffer tracking data transmission for easy troubleshooting

### Compatibility

- IEEE 802.3
- 802.3u
- 802.3z
- 802.1d
- 802.3x
- 802.1p
- 802.1q

# TigerSwitch™ 10/100

48-Port 10/100 Mbps Standalone Managed  
Layer 2 Switch

Switches/Hubs



## SMC6948L2

### Ports

48 10/100 RJ-45 ports  
2 slots for Expansion Modules  
Built-in Network Management

### Network Interface

10BASE-T: RJ-45 UTP Cat. 3,4,5  
100BASE-TX: RJ-45 UTP Cat. 5  
1000BASE-T: RJ-45 UTP Cat. 5  
100BASE-FX: VF-45/SC/ST connector  
1000BASE-SX: SC connector  
1000BASE-LX: SC connector

### Buffer Architecture

128 Kbps per 10/100 Mbps ports  
2 Mbps per 1000 Mbps port

### Aggregate Bandwidth

13.6 Gbps

### Switching Database

12,000 MAC address entries

### LED Indicators

System (power, RDP, Mgmt.)  
Port: mode (flow control, full-duplex, activity)  
Link (speed, link, disable/partition)

### Weight

18.07 lbs

### Size

22.4 x 19 x 7.5 in

### Temperature

Operating: 32° – 122° F  
Storage: -4° - 158° F

### Humidity

Operating 5% to 95% (non-condensing)

### AC Input

100 to 240 V, 50-60 Hz

### Power Supply

Internal, auto-ranging transformer:  
100 - 240 VAC, 50-60 Hz  
Redundant DC input

### Power Consumption

100 W

### Heat Dissipation

273 BTU/hr.

### Maximum Current

0.80A RMS max.@110 VAC  
0.50A RMS max.@240 VAC

### MTBF

6 years

### Switch Features

Spanning Tree Protocol  
Forwarding Mode  
Store-and-forward

### Flow Control

Full-duplex: IEEE 802.3x  
Half-duplex: back pressure

### VLAN Support

Up to 256 groups, port-based or with  
802.1Q VLAN tagging, GVRP for auto-  
matic VLAN learning

### Quality of Service

Supports two levels of priority and  
weighted Fair Queuing  
Broadcast Storm Control  
MultiLink Trunking  
Port Mirroring

### Management Features

In-Band Management  
Telnet, SLIP, Web-based HTTP or SNMP  
Manager

### Out-of-Band Management

RS-232 DB-9 console port

### Software Loading

TFTP in-band or Xmodem out-of-band

### MIB Support

MIB II (RFC 1213), Bridge MIB (RFC 1493),  
Ethernet-like MIB (RFC 1643), RMON MIB  
(RFC 1757), SMC proprietary MIB

### RMON Support

Groups 1,2,3,9 (Statistics, History, Alarm,  
Event)

### Standards

IEEE 802.3 Ethernet  
IEEE 802.3u Fast Ethernet  
IEEE 802.1d Spanning Tree Protocol and  
traffic priorities  
IEEE 802.1p Priority Tags  
IEEE 802.1q VLAN  
IEEE 802.3ac VLAN Tagging  
IEEE 802.3x Full-duplex flow control; ISO  
IEC 8802-3  
SNMP (RFC 1157), RMON (RFC 1757), ARP

(RFC 826),

IGMP (RFC 1112), MIB II (RFC 1213),  
Ethernet-like MIB  
(RFC 1643), Bridge MIB (RFC 1493)

### Compliances

CE Mark  
• Emissions  
FCC Class A  
Industry Canada Class A  
EN55022 (CISPR 22) Class A  
VCCI Class A  
C-Tick – AS/NZS 3548 (1995) Class A  
• Immunity  
IEC 1000 – 4 – 2/3//4/6  
• Safety  
CSA/NRTL (CSA 22.2.950 & UL 1950),  
EN60950 (TUV/GS)

### Warranty

Limited Lifetime

### Models

SMC6900FSC, SMC6900FST,  
SMC6900FSSC

### Ports

2 – 100Base-FX MMF or  
1 – 100Base-FX SMF

### Model

SMC6900GT

### Ports

(1) 10/100/1000Base-T

1000Base-SX Extender Module

1000Base-LX Extender Module

### Model

SMC6900G  
SMC6900GLSC

### Ports

(1) 1000Base-SX  
(1) 1000Base-LX

Redundant Power Unit

### Model

SMCRPU150W

### Function

Redundant Power Unit with cables;  
supports one device

Product	Description
SMC6948L2	Tigerswitch 10/100 48-Port Managed Switch With Gigabit Uplinks
SMC6900G	TigerSwitch 10/100 1-port 1000BASE-SX Expansion Module
SMC6900GLSC	TigerSwitch 10/100 1-port 1000BASE-LX Expansion Module
SMC6900GT	TigerSwitch 10/100 1-port 10/100/1000BASE-T Expansion Module
SMC6900FSC	TigerSwitch 10/100 2-Port 100Base-FX MMF SC Fiber Module
SMC6900FSSC	TigerSwitch 10/100 1-Port 100Base-FX SMF SC fiber Module
SMC6900FST	TigerSwitch 10/100 100Base-FX MMF SC Fiber Module with SC-ST converters
SMCRPU150W	Redundant Power Supply